

LOS ANGELES UNIFIED SCHOOL DISTRICT
Office of the Chief Medical Director
District Nursing Services

GLUCAGON NASAL SPRAY (BAQSIMI): A MEDICAL EMERGENCY PROCEDURE

I. GENERAL GUIDELINES

A. PURPOSE

1. To rapidly raise the blood sugar level when a student is experiencing a severe episode of hypoglycemia.

B. GENERAL INFORMATION

1. Glucagon is a natural hormone produced in the pancreas and raises blood glucose levels.
2. Glucagon is a life-saving treatment that cannot cause harm to the student when administered as prescribed. There is no danger of overdose.
3. Glucagon stimulates the release of stored sugar (glycogen – a form of carbohydrate) in the liver that raises blood glucose levels.
4. Follow Health Care Provider Authorization for correct dose. Each Baqsimi device delivers one 3mg dose of glucagon dry powder which can be administered to adults and children over the age of 4. IT IS FOR ONE TIME USE ONLY.
5. Glucagon should be stored at room temperature.
6. Call 911 for severe hypoglycemia if Glucagon is not available.

C. PRECAUTIONS

1. Check medication authorization for correct dose.
2. Check medication expiration date.
3. Do not prepare glucagon for administration until ready for use.
4. Each device is for single use only. Return used device to parent/guardian. Do not discard.

D. PERSONNEL



1. Licensed Nursing Provider or School Physician.
2. Designated and trained school personnel under direct or indirect supervision of the school nurse.

E. EQUIPMENT

1. Provided by Parent/Guardian
 - a. Glucagon Emergency Kit /Glucagon Nasal Spray, unused in original packaging with student's name, and dose.
 - b. Regular soda or juice (NOT diet), glucose tablets/glucose gel if prescribed by MD
2. Provided by School:
 - a. Disposable non-latex gloves
 - b. Plastic bag for returning device to parent/guardian

LOS ANGELES UNIFIED SCHOOL DISTRICT
Office of the Chief Medical Director
District Nursing Services

II. PROCEDURE FOR GLUCAGON NASAL SPRAY(BAQSIMI)

ESSENTIAL STEPS	KEY POINTS AND PRECAUTIONS
1. CALL PARAMEDICS – 911 and obtain the glucagon kit	Designate someone to call paramedics. Do not leave student unattended.
2. Turn student on their side if unconscious	Prevent aspiration. Nausea and vomiting may occur as side effects of glucagon or extreme hypoglycemia.
3. Prepare glucagon for administration <ol style="list-style-type: none"> a. Remove the shrink wrap around the device by pulling on the red stripe. b. Open the lid and remove the device from the tube. c. Hold the device between two fingers and your thumb. 	Do not give if medication has expired or if the tube has been opened. The product could be exposed to moisture and this could cause the medication not to work as expected. Do not push the plunger or test the device until you are ready to give a dose. Each device is single use only Baqsimi will work even if student has a cold or is taking cold medicine.
4. Administer Nasal Glucagon (Baqsimi) <ol style="list-style-type: none"> a. Insert the tip of the device into one nostril until your fingers touch the outside of the nose.  <ol style="list-style-type: none"> b. Push the plunger all the way in. The dose is complete when the green line marked on the plunger disappears. c. Place used device in plastic bag and return to parent/guardian. 	If possible, put on gloves. If student is unconscious, keep student on their side. Stay with the student and keep them on their side until they regain consciousness.
5. Recovery may take 7 to 30 minutes. If there is no response to glucagon nasal spray (Baqsimi) within 15 minutes, administer a second dose using a new (Baqsimi) glucagon device if ordered.	Common side effects are headache, runny nose, discomfort in nose, nausea and vomiting. Juice may aggravate nausea. Nasal glucagon (Baqsimi) takes about seven to eight minutes to start working and peak levels are reached within 30 minutes and last for at least 90 minutes.

LOS ANGELES UNIFIED SCHOOL DISTRICT
Office of the Chief Medical Director
District Nursing Services

II. PROCEDURE FOR GLUCAGON NASAL SPRAY(BAQSIMI) continued

ESSENTIAL STEPS	KEY POINTS AND PRECAUTIONS
6. If student becomes conscious and is able to swallow, give sips of fast acting source of sugar (regular soda or juice [NOT diet] or glucose tabs/glucose gel if prescribed) and then a protein snack such as cheese and crackers once student is alert and able to swallow.	
7. Notify parent/guardian and school nurse.	Parent/guardian must replace Glucagon Emergency Kit when child returns to school.
8. Document glucagon emergency administration electronically. If not available, use Nursing Protocol Log indicating: a. Medication Name b. Dose c. Route d. Reason e. Time of glucagon administration f. Result g. Interventions taken	School Nurse will record information regarding this incident on the student's electronic health record. Site administrator initiates iSTAR report.

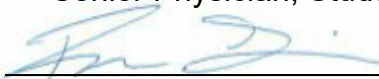
APPROVED: 12/3/2021
Date



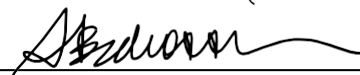
Smita Malhotra, MD
Medical Director



Rosina Franco, MD
Senior Physician, Student Medical Services



Ron Tanimura, Ed.D
Director, Student Medical Services



Sosse Bedrossian, MSN, MA, RN, FNP
Director, District Nursing Services

LOS ANGELES UNIFIED SCHOOL DISTRICT
Office of the Chief Medical Director
District Nursing Services

REFERENCES:

American Diabetes Association. (n.d.). Legal Rights. Retrieved June 9, 2021 from <http://www.diabetes.org/living-with-diabetes/parents-and-kids/diabetes-care-at-school/legal-protections/>

LAUSD Glucagon Injection:A Medical Emergency Procedure(Approved 3/01/2019)

California Education Code Section 49414.5(Voluntary Emergency Medical Training for School Personnel to Assist Pupils with Diabetes with Severe Hypoglycemia)

California Diabetes Program,Glucagon Training Standards for School Personnel (May,2006) (PDF)

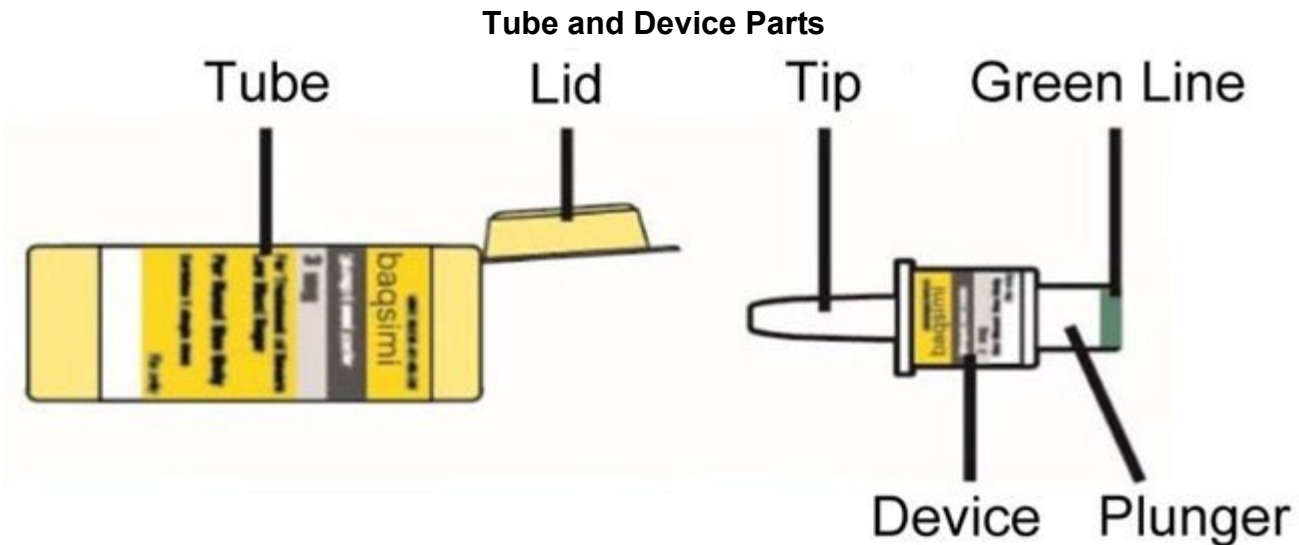
Administration Instructions for Baqsimi-Glucagon Powder by Eli Lilly and Company

Administration Instruction Video for Baqsimi –Glucagon Powder by Eli Lilly and Company

Lynne L Levitsky,MD, Madhusmita Misra,MD,MPH Hypoglycemia in Children and Adolescents with Type 1 Diabetes Mellitus[online] retrieved from [http://www.uptodate.com/contents/hypoglycemia-in-children-and-adolescents-with-type-1-diabetes-mellitus?search=nasalpowder glucagon&source=search_result & selected](http://www.uptodate.com/contents/hypoglycemia-in-children-and-adolescents-with-type-1-diabetes-mellitus?search=nasalpowder+glucagon&source=search_result&selected)

Administration Instruction Video for Baqsimi –Glucagon Powder by Eli Lilly and Company, Retrieved August 25, 2021 from <https://www.baqsimi.com/how-to-use-baqsimi>

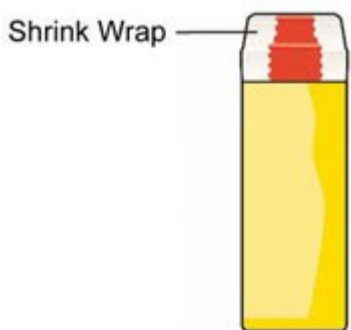
Read the Instructions for Use for BAQSIMI before using it. BAQSIMI is used to treat very low blood sugar (severe hypoglycemia) that may cause you to need help from others. You should make sure you show your caregivers, family and friends where you keep BAQSIMI and explain how to use it by sharing these instructions. **They need to know how to use BAQSIMI before an emergency happens.**



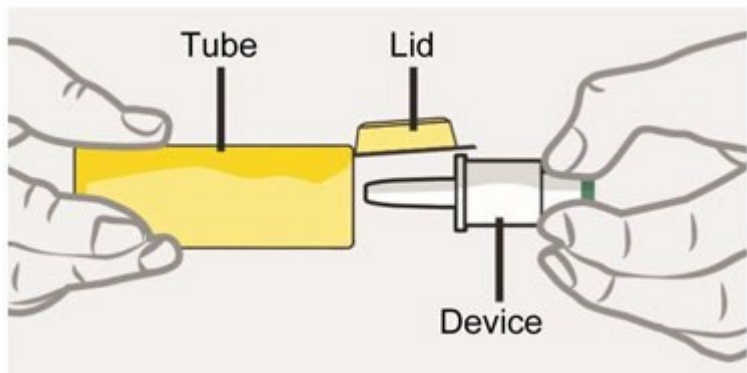
Important Information to Know

- **Do not** remove the Shrink Wrap or open the Tube until you are ready to use it.
- If the Tube has been opened, BAQSIMI could be exposed to moisture. **This could cause BAQSIMI not to work as expected.**
- Do not push the plunger or test BAQSIMI before you are ready to use it.
- BAQSIMI contains 1 dose of glucagon nasal powder and **cannot** be reused.
- BAQSIMI is for nasal (nose) use only.
- BAQSIMI will work even if you have a cold or are taking cold medicine.

Preparing the Dose



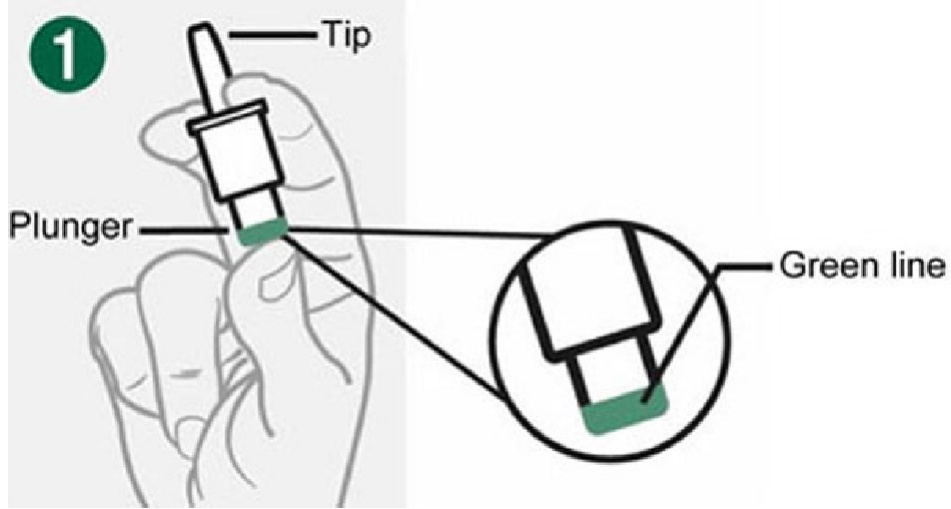
- Remove the Shrink Wrap by pulling on red stripe.



- Open the Lid and remove the Device from the Tube. **Caution: Do not press the Plunger until ready to give the dose.**

Giving the Dose





- **Hold Device** between fingers and thumb.
- **Do not** push Plunger yet.



- **Insert Tip** gently into one nostril until finger(s) touch the outside of the nose.



- **Push Plunger** firmly all the way in.
- **Dose is complete** when the **Green Line** disappears.

After giving BAQSIMI

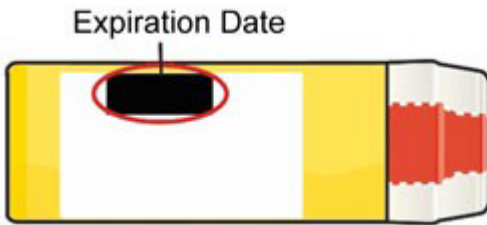
- Call for emergency medical help right away.
- If the person is unconscious turn the person on their side.
- **Throw away the used Device and Tube.**



- Encourage the person to eat as soon as possible. When they are able to safely swallow, give the person a fast acting source of sugar, such as juice. Then encourage the person to eat a snack, such as crackers with cheese or peanut butter.
- If the person does not respond after 15 minutes, another dose may be given, if available.

Storage and Handling

- **Do not remove the Shrink Wrap or open the Tube until you are ready to use it.**
- Store BAQSIMI in the shrink wrapped Tube at temperatures up to 86° F (30°C).
- Replace BAQSIMI before the expiration date printed on the Tube or carton.



Other Information

- **Caution: Replace the used BAQSIMI right away so you will have a new BAQSIMI in case you need it.**
- Keep BAQSIMI and all medicines out of the reach of children.

For Questions or More Information about BAQSIMI

- Call your healthcare provider
- Call Lilly at 1-800-Lilly-Rx (1-800-545-5979)
- Visit www.baqsimi.com

BAQSIMI is a trademark of Eli Lilly and Company.

Marketed by: Lilly USA, LLC

Indianapolis, IN 46285, USA

Copyright © 2019, Eli Lilly and Company. All rights reserved.

BAQSIMI Device meets all applicable requirements defined in ISO 20072

This Instructions for Use has been approved by the U.S. Food and Drug Administration

Issued: July 2019

BAQ-0001-IFU-20190724

The Lilly logo, featuring the word "Lilly" in a red, cursive script.

[Hide](#)

[View All Sections](#)

Revised: 10/2020

Document Id: 3928d4ab-2923-4932-91cb-d18870b0972e

Set id: 3fdb4e92-2e19-487d-9f14-99871e9fd15a

Version: 5

Effective Time: 20201027

Eli Lilly and Company

