



INTER-OFFICE CORRESPONDENCE  
Los Angeles Unified School District

August 10, 2011

TO: Members, Board of Education  
John Deasy, Superintendent

FROM: *Cynthia*  
Cynthia Lim, Executive Director  
Office of Data and Accountability

SUBJECT: 2011 STANDARDIZED TESTING AND REPORTING (STAR) RESULTS

---

**This informative is embargoed until Monday, August 15, 10:00 a.m. when the California Department of Education releases this information via the Internet.**

This report provides the results for the Standardized Testing and Reporting (STAR) program which includes the California Standards Tests (CST), and assessments for students with disabilities: the California Modified Assessment (CMA) and the California Alternative Performance Assessment (CAPA). This informative highlights the results of the CST which assesses students in grades 2 through 11, including English learners and students with disabilities. The CST is used to measure how well students are achieving California's content standards and to determine how schools are meeting state and federal accountability requirements.

The data presented in this informative do not include independent charter schools that are not on the District's Student Information System (SIS) or did not test with LAUSD. CST data for charters will not be available for analysis until the public release on August 15.

#### **HIGHLIGHTS**

**LAUSD continued its upward trajectory in 2011. Proficiency rates increased for every grade level and nearly all tested subjects on the CST.**

- Districtwide, proficiency in English language arts increased by 3 percentage points, from 41% to 44%. In Mathematics, proficiency increased by 4 percentage points, from 39% to 43%. Comparisons to the statewide average will not be available until August 15.
- Across the District, the percentage of students scoring in the lowest performance bands (Far Below Basic and Below Basic) decreased. Part of the decrease was due to more students with disabilities being tested on the California Modified Assessment (CMA).
- In English language arts, proficiency rates Grade 3, 7 and 8 increased by five percentage points.
- In Mathematics, the highest gains in percentage points were at Grades 2 and 3, which increased by six and eight percentage points, respectively. Gains in middle and high school were more modest, at two or three percentage points.
- Proficiency in elementary and middle school science continues to climb. Grade 5 and 8 Science scores improved by four and five percentage points, respectively.

- Social Science scores in Grade 8 and U.S. History improved by six and four percentage points, respectively.
- Proficiency rates increased for every subgroup in both English language arts and Mathematics, with higher gains in percentage points in Mathematics.

### Challenges

- In spite of modest percentage point gains at the high school level in Mathematics, proficiency rates remained below 20%, except for High School Summative Math.
- Although there were increases for all ethnic groups, the achievement gap between White and African-American and Latino students persists.

### **OVERALL PROFICIENCY RATES**

Across all LAUSD students tested in English language arts, the percentage of students scoring proficient or advanced increased by 3 percentage points in the past year, from 41% to 44%. Over the past five years, proficiency rates across the District have increased by 14 percentage points.

In Mathematics, 43% of LAUSD students were proficient or above. Proficiency rates in LAUSD increased by 4 percentage points from the previous year. Comparisons to the statewide average will not be available until August 15.

Table 1: *LAUSD's Proficiency Rates Continue to Increase*

	Percent Proficient or Advanced						Percentage Point Gain	
	2006	2007	2008	2009	2010	2011	'10-'11	'06-'11
English Language Arts	30	31	34	38	41	44	3	14
Mathematics	31	31	35	37	39	43	4	12

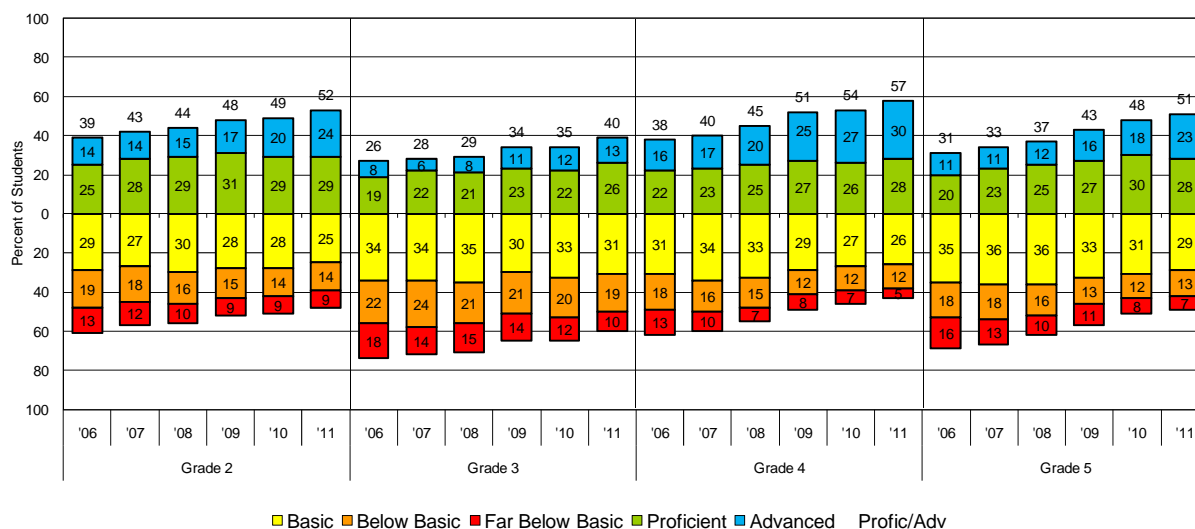
### **ENGLISH LANGUAGE ARTS**

#### Elementary Schools

At the elementary level, the upward trend in achievement continued. The percentage of students scoring proficient or advanced increased at every grade level. Additionally, there were decreases in the percentages of students scoring in the lowest performance bands (Far Below Basic and Below Basic) at each grade level.

The highest gains in percentage points were at Grade 3, from 35% to 40%, a gain of five percentage points. In Grades 2, 4 and 5, more than half of LAUSD's students were proficient or advanced.

Chart 2: More than Half of Grades 2, 4 and 5 Students Scored Proficient or Above in English Language Arts on the California Standards Test



Many of LAUSD schools with high poverty rates showed increases higher than the District average. Of the 221 elementary schools with 100% of their students on free and reduced lunch, 98 (44%) posted gains higher than the District average. The three elementary schools listed below had double digit gains in percentage points in 2011 and showed sustained growth in English language arts over the last four years. All three schools have 100% of their students eligible for free and reduced lunches and have increased proficiency rates by 20 percentage points over the last four years.

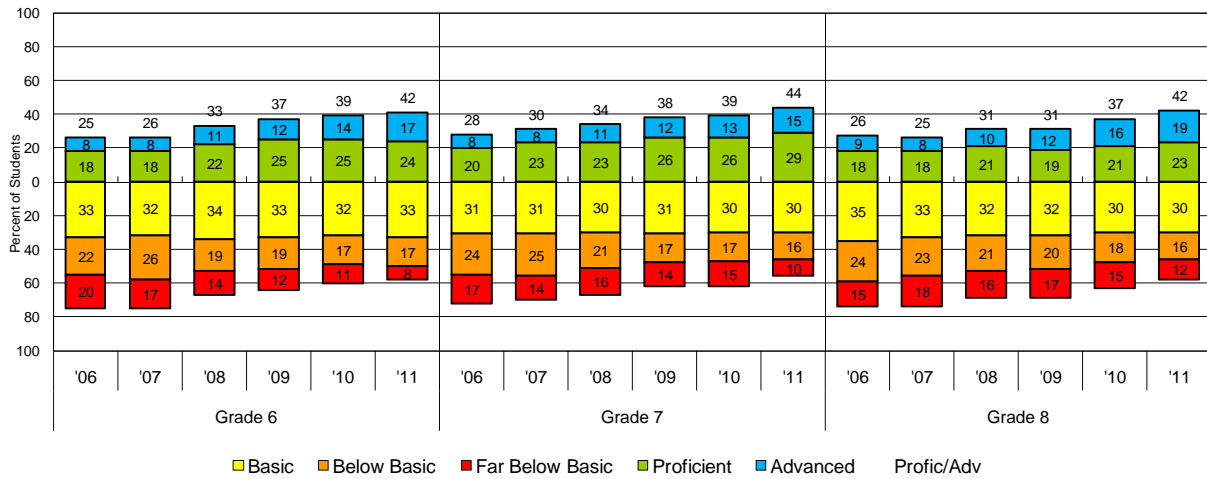
Table 3: Elementary Schools With Sustained Increases Over the Last Four Years in English Language Arts

School	LD	BM	Demographics				Percent Proficient or Advanced				Percentage Point Gain		
			% FR Lunch	2010-11 Enr	% EL	% SWD	2008	2009	2010	2011	08 to 09	09 to 10	10 to 11
PLUMMER EL	1	6	100%	741	64%	11%	41	50	52	68	+9	+2	+16
BARTON HILL EL	8	7	100%	799	35%	13%	31	38	44	54	+7	+6	+10
BURTON EL	1	6	100%	624	52%	11%	37	41	47	57	+4	+6	+10

### Middle Schools

Middle school proficiency rates also continued to increase. Over 40% of students in middle school scored proficient or advanced. The highest percentage point gains were in grades 7 and 8 with five percentage points. Additionally, the percentage of students scoring at the lowest performance bands decreased at all grade levels in middle school.

Chart 4: Over 40% of Students in Grades 6-8 were Proficient or Above in English Language Arts on the California Standards Test



Fewer middle schools posted double digit gains in percentage points like elementary schools. However, three middle schools that serve a large percentage of students with free and reduced lunches have made steady gains in English language arts for the past four years. King MS has increased proficiency by 10 percentage points for two years in a row. Audubon MS increased proficiency by 11 points in 2010 and nine points in 2011. Marina del Rey MS has made steady progress in raising proficiency over the last four years.

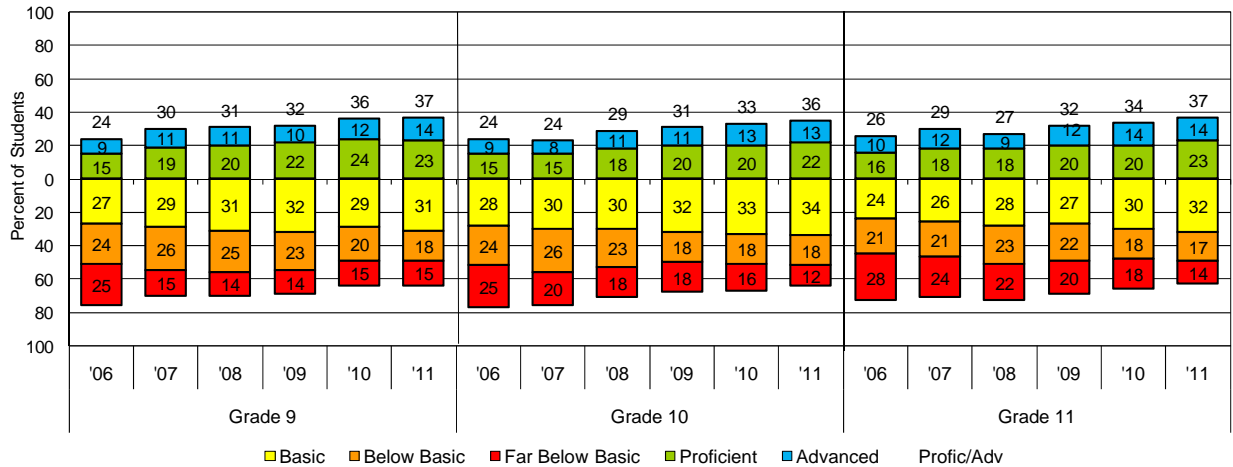
Table 5: Middle Schools With Sustained Increases Over the Last Four Years in English Language Arts

School	LD	BM	Demographics				Percent Proficient or Advanced				Percentage Point Gain		
			% FR Lunch	2010-11 Enr	% EL	% SWD	2008	2009	2010	2011	08 to 09	09 to 10	10 to 11
KING MS	4	5	100%	1,505	17%	11%	32	36	46	56	+4	+10	+10
AUDUBON MS	3	1	86%	816	11%	15%	22	23	34	43	+1	+11	+9
MARINA DEL REY	3	4	87%	843	17%	14%	28	35	40	47	+7	+5	+7

High Schools

Gains at the high school level were more modest. While proficiency rates have increased from the mid-20's since 2006, Grade 9 students increased proficiency by one percentage point, while grades 10 and 11 gained three percentage points. Over a third of high school students are proficient or above in English language arts.

Chart 6: High School Posted Modest Gains in English Language Arts on the California Standards Test



Very few high schools had large increases in proficiency in the past year. Several schools were notable for making steady, incremental progress in English language arts over the past four years. Garfield SH, one of the schools in Public School Choice 1.0, increased proficiency by 10 percentage points in 2010 and by seven points in 2011. Polytechnic and Canoga Park also show steady gains over the last four years.

Table 7: High Schools With Sustained Increases Over the Last Four Years in English Language Arts

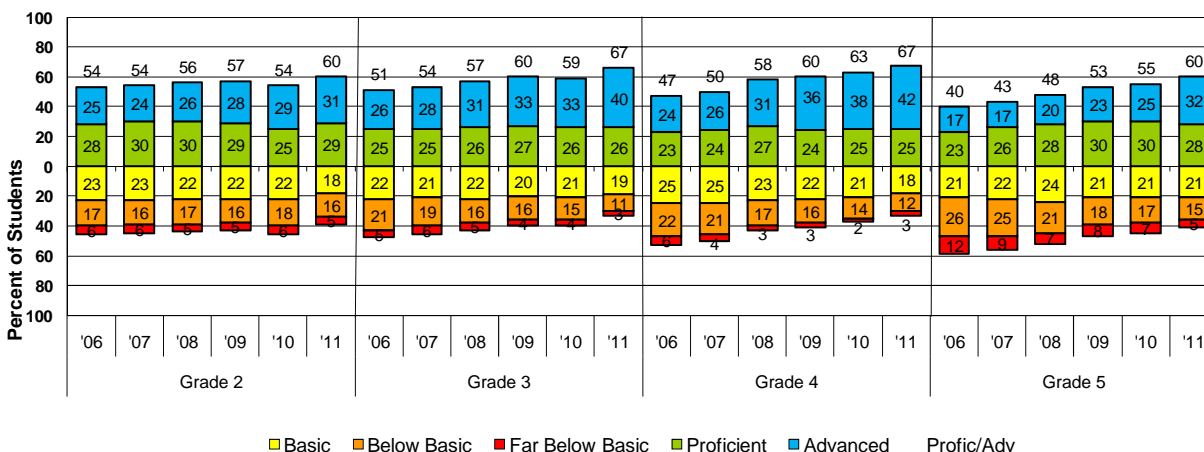
School	LD	BM	Demographics				Percent Proficient or Advanced				Percentage Point Gain		
			% FR Lunch	2010-11 Enr	% EL	% SWD	2008	2009	2010	2011	08 to 09	09 to 10	10 to 11
GARFIELD SH	5	5	100%	2,912	20%	9%	21	22	32	39	+1	+10	+7
POLYTECHNIC SH	2	6	89%	3,041	26%	11%	28	30	37	42	+2	+7	+5
CANOGA PARK	1	3	73%	1,825	25%	14%	30	32	35	39	+2	+3	+4

## MATHEMATICS

### Elementary Schools

The highest gains on any of the CST tests were in Grades 2 and 3, where percentage points increased by six and eight percentage points, respectively. (In the previous year, scores in Grades 2 and 3 decreased.) Over two thirds of the students in Grades 3 and 4 were proficient or above in Mathematics. Elementary math scores had the highest percentage of students scoring at the Advanced level. In Grade 4, 42% of the students were at the Advanced level.

Chart 8: Over Two Thirds of the Students in Grade 3 and 4 Scored Proficient or Advanced in Mathematics



Gains in proficiency at the elementary level were impressive. Ninety elementary schools had double digit gains in proficiency in Mathematics in the last year. Of those 90 schools, the three highlighted schools below had high poverty rates and have increased proficiency by more than 20 percentage points over the past four years. 116<sup>th</sup> St. School has increased proficiency from 41% in 2008 to 71% in 2011. Over the same time period, Dyer increased proficiency by 30 percentage points. Lizarraga had modest gains in 2009 but increased proficiency by 10 percentage points for two years in a row.

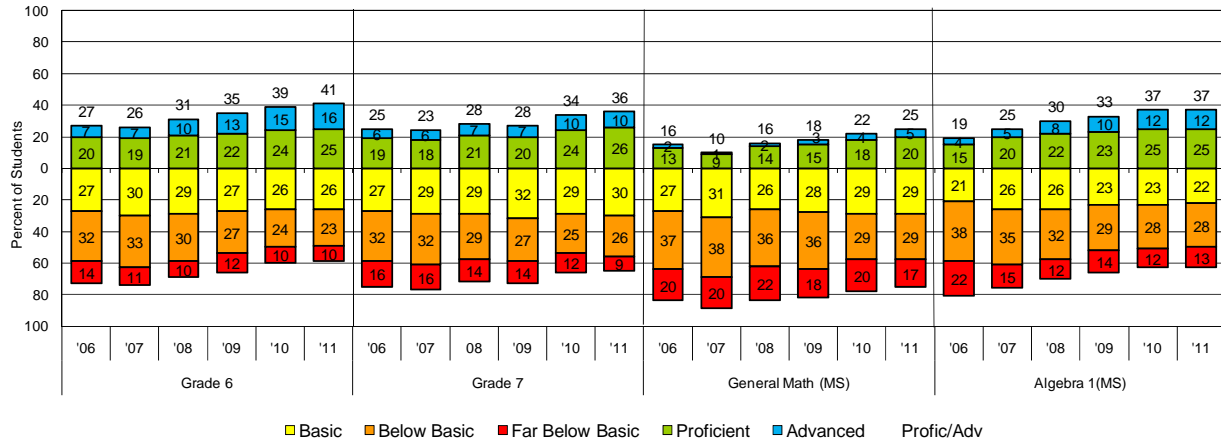
Table 9: Elementary Schools With Sustained Increases Over the Last Four Years in Mathematics

School	LD	BM	Demographics				Percent Proficient or Advanced				Percentage Point Gain		
			% FR Lunch	2010-11 Enr	% EL	% SWD	2008	2009	2010	2011	08 to 09	09 to 10	10 to 11
116TH ST EL	7	7	100%	450	33%	12%	41	47	53	71	+6	+6	+18
DYER EL	2	6	86%	815	52%	10%	46	49	60	76	+3	+11	+16
LIZARRAGA EL	5	7	100%	752	65%	9%	44	46	56	66	+2	+10	+10

Middle Schools

Middle school math scores showed modest gains in grades 6, 7 and among 8th graders taking pre-Algebra who tested in General Mathematics. Proficiency rates increased by two and three percentage points. However, middle school Algebra proficiency rates remained flat at 37%, compared to the previous year.

Chart 10: Middle School Proficiency Showed Modest Gains in Mathematics



Overall proficiency rates at middle schools were lower than elementary schools. However, at the three middle schools listed below, there have been steady increases in proficiency over the last three years. At Edison MS, the school configuration changed to grades 7 and 8 only in 2010-11. Proficiency rates grew by 17 percentage points in the last year, from 21% to 38%. Audubon MS has also shown steady increases each year. King MS increased proficiency in both English language arts and Mathematics.

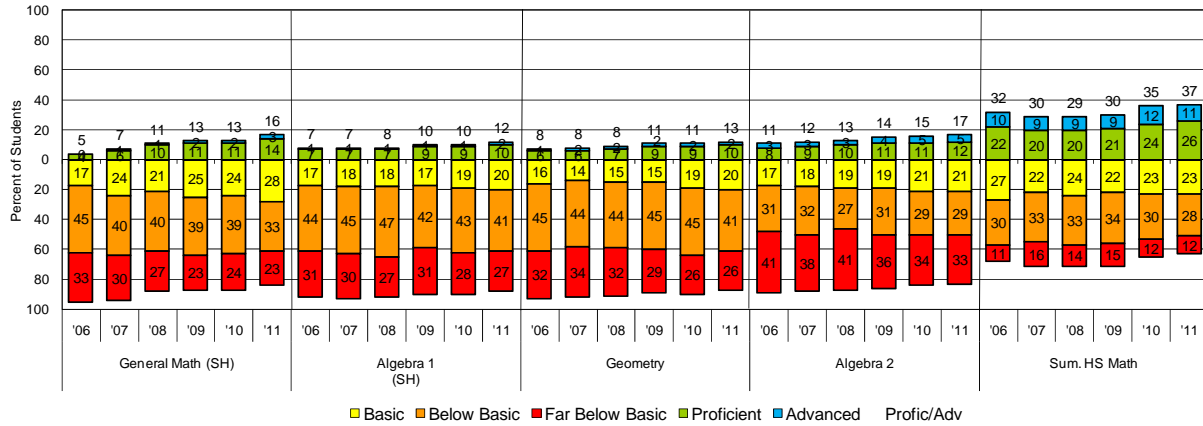
Table 11: Middle Schools With Sustained Increases Over the Last Four Years in Mathematics

School	LD	BM	Demographics				Percent Proficient or Advanced				Percentage Point Gain		
			% FR Lunch	2010-11 Enr	% EL	% SWD	2008	2009	2010	2011	08 to 09	09 to 10	10 to 11
EDISON MS	7	7	100%	1,176	28%	11%	12	11	21	38	-1	+10	+17
AUDUBON MS	3	1	86%	816	11%	15%	11	15	22	35	+4	+7	+13
KING MS	4	5	100%	1,505	17%	11%	29	30	39	48	+1	+9	+9

High Schools

High school mathematics remained a challenge for the majority of the students in LAUSD. Although proficiency rates showed incremental improvement, less than 20% of high school students scored proficient or above in General Mathematics, Algebra, Geometry and Algebra 2. In High School Summative Math, the test taken by students who have completed Math courses up to Algebra 2, the percentage scoring proficient or above increased by one percentage point.

Chart 12: Proficiency Rates Remained Low at the High School Level for Most of the Mathematics Tests on the California Standards Tests



With the exception of H.S. Summative Math, proficiency rates in high school remained low at most of the comprehensive high schools. Very few schools demonstrated double digit gains in Mathematics. The three schools highlighted below are making steady progress in increasing proficiency in Mathematics. Garfield SH has increased proficiency from 5% in 2009 to 23% in 2011. Downtown Business Magnet has been increasing proficiency each year. Polytechnic had flat growth in 2009 but has increased proficiency in 2010 and 2011.

Table 13: High Schools With Sustained Increases Over the Last Four Years in Mathematics

School	LD	BM	Demographics				Percent Proficient or Advanced				Percentage Point Gain		
			% FR Lunch	2010-11 Enr	% EL	% SWD	2008	2009	2010	2011	08 to 09	09 to 10	10 to 11
GARFIELD SH	5	5	100%	2,912	20%	9%	5	5	9	23	0	+4	+14
DOWNTOWN BUSINESS MAG	4	2	83%	1,043	10%	2%	19	21	26	38	+2	+5	+12
POLYTECHNIC SH	2	6	89%	3,041	26%	11%	12	12	19	27	0	+7	+8

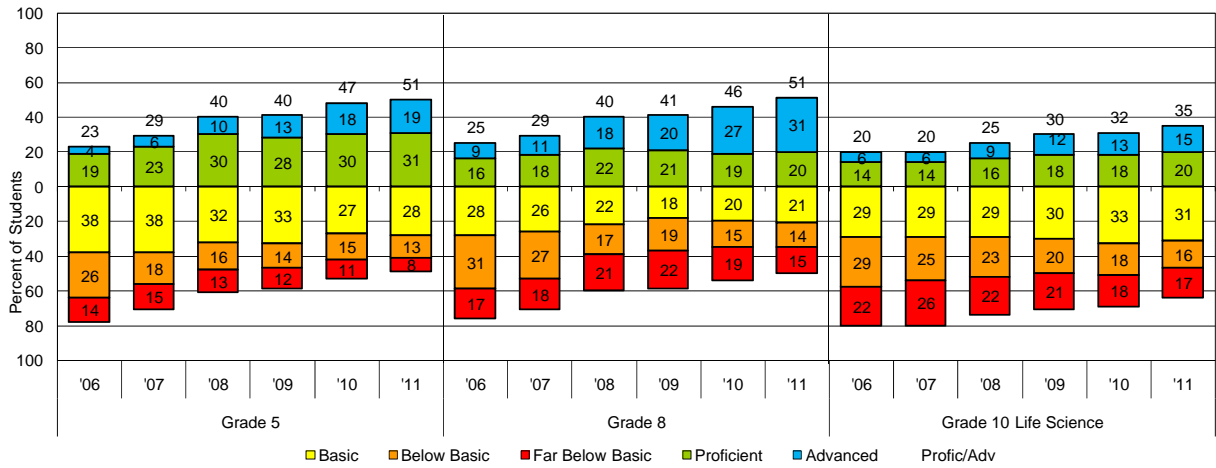
## SCIENCE

Proficiency rates in Science at the elementary and middle school level continue to climb. More than half of the students tested in Grades 5 and 8 were proficient or above in Science. Proficiency rates have more than doubled since 2006 in Grades 5 and 8.

In Grade 10, all 10th graders are tested in Life Science, regardless of whether they are taking a Science course. Proficiency rates in Grade 10 Science increased by three percentage points.

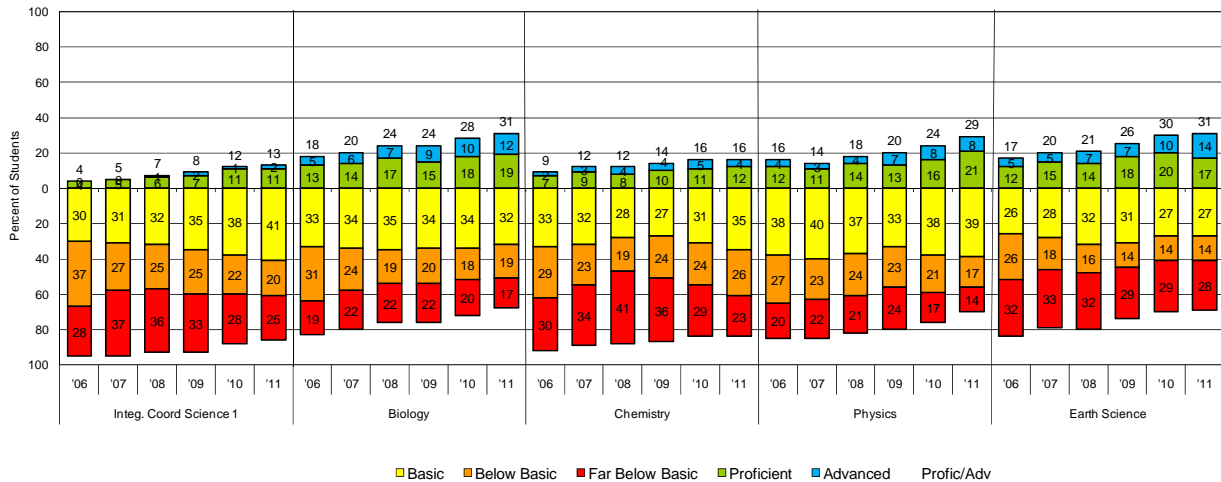


Chart 14: More than Half of Grade 5 and 8 Students Scored Proficient or Above on the California Standards Test, Science



At the high school level, students who were enrolled in a standards-based science course in grades 9, 10, and 11 were assessed with end of course tests. Proficiency rates on these tests were lower than elementary and middle school. Integrated Coordinated Science and Chemistry had the lowest proficiency rates. Proficiency rates increased by five percentage points in Physics and three percentage points in Biology but remained flat or showed incremental increases in the other subjects.

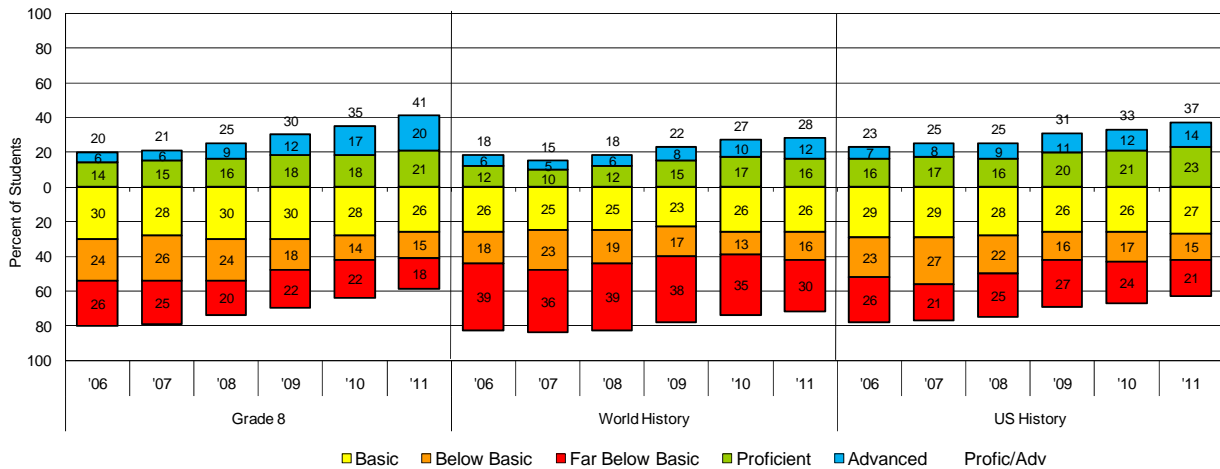
Chart 15: Proficiency Rates Increased for Physics and Biology But Remain Flat for Other Subjects on the California Standards Test, Science



**SOCIAL SCIENCE**

Social Science scores increased in Grade 8 and in U.S. History at high schools, with gains of 6 and 4 percentage points, respectively. Social Science tests are taken by students in Grade 8, U.S. History (Grade 11) and in World History. Proficiency rates in Grade 8 Social Science have doubled since 2006.

Chart 16: Proficiency Rates Have Doubled Since 2006 for Grade 8 on the California Standards Test, History-Social Science



**EFFECT OF THE CALIFORNIA MODIFIED ASSESSMENT (CMA)**

The California Modified Assessment (CMA) is an alternative assessment based on modified standards for students with disabilities with an Individualized Education Program (IEP). The CMA is designed to assess students whose disabilities preclude them from achieving grade level proficiency. Students with disabilities are eligible to take the CMA if they have taken the CST in the previous year and scored Below Basic or Far Below Basic or took the CST with modifications.

For federal accountability purposes, there is a two percent cap on the percentage of students whose scores can be counted as proficient or above based on an assessment using modified achievement standards. This means that for measuring Adequate Yearly Progress, no more than two percent of the District's proficiency rate will be based on students taking the CMA. Based on calculations of 2011 test scores, the District is below the two percent cap.

However, in the last year, the number of CMA test takers has doubled, from roughly 14,000 students to 28,000 students, which can account for a portion of the increased proficiency rates and the decrease in the percentage of students scoring at the lowest performance bands on the CST. The estimated effect of CMA test takers is roughly less than one percentage point in each of the grade levels that had CMA test takers.

Table 17: Number of CMA Test Takers Doubled in the Last Year

	2008	2009	2010	2011
English Language Arts (Grades 3-11)	159	2,093	6,531	13,501
Mathematics (Grades 3 - 7)	151	1,726	4,932	9,110
Algebra		-	645	1,379
Geometry		-	-	556
Science (Grades 5, 8, 10)	77	572	1,940	3,874
Total Tested in CMA	387	4,391	14,048	28,505
Total LAUSD Students Tested	506,940	493,608	476,532	460,949
CMA as Percentage of Total Test Takers	0%	1%	3%	6%

## PERFORMANCE BY SUBGROUPS

### English Language Arts

Proficiency rates increased by at least two percentage points for every subgroup on the English language arts tests.

- A higher percentage of female students (47%) were proficient in English language arts, compared to male students (41%), although male students gained four percentage points in the last year.
- Proficiency rates for African-American students gained by two percentage points, while Latino and White students gained by three percentage points.
- While both economically disadvantaged and non-economically disadvantaged students increased by three percentage points, the gap between the two groups remain, at 39% and 63%, respectively.
- Proficiency rates for students with disabilities and students without disabilities both increased by three percentage points. Part of the increase for students with disabilities was due to more students taking the California Modified Assessments (CMA), as noted earlier.
- Proficiency rates among students who are fluent in English (English Only, IFEP and REFP) exceeded 50%. English learners gained two percentage points from the previous year, from 13% to 15%.

Table 18: Proficiency Rates Increased for Each Subgroup in English Language Arts

LAUSD		Percent Proficient or Advanced					Change in Percentage Points			
English-Language Arts CST		2006	2007	2008	2009	2010	2011	10 to 11	06 to 11	06 - 11 Avg. Change
All Students		30	31	34	38	41	44	3	14	2.8
Gender	Females	32	34	37	41	44	47	3	15	3.0
	Males	26	28	31	34	37	41	4	15	3.0
Ethnicity	African American	25	26	29	32	36	38	2	13	2.6
	American Indian	35	36	40	45	46	49	3	14	2.8
	Asian	63	65	69	71	73	75	2	12	2.4
	Filipino	55	58	61	64	66	68	2	13	2.6
	Latino	23	25	28	32	35	38	3	15	3.0
	Pacific Islander	35	38	39	44	46	49	3	14	2.8
	White	61	63	65	68	71	74	3	13	2.6
Economically Disadvantaged		24	26	29	33	36	39	3	15	3.0
Non-Economically Disadvantaged		47	47	49	57	60	63	3	16	3.2
Students with Disabilities		6	6	7	9	10	13	3	7	1.4
Students with no Reported Disability		32	34	37	41	44	47	3	15	3.0
English Only		38	40	43	47	49	52	3	14	2.8
IFEP		52	53	56	60	63	65	2	13	2.6
RFEP		39	41	45	47	49	52	3	13	2.6
English Learner		10	10	10	12	13	15	2	5	1.0

### Mathematics

Proficiency rates increased for every subgroup in Mathematics.

- An equal percentage of males and females were proficient or above in Mathematics. Proficiency rates for males and females increased by four percentage points from the previous year.
- Latino and White students increased by four percentage points while African-American students increased by three percentage points. Proficiency rates in Mathematics were lowest for African-American students at 33%, compared to 39% for Latinos and 69% for White students.
- Economically disadvantaged students improved by four percentage points, from 36% to 40%, while non-economically disadvantaged students improved by three percentage points.
- Students with disabilities gained four percentage points, while students without disabilities gained three percentage points. Part of the increase for students with disabilities was due to more students taking the California Modified Assessments (CMA), as noted earlier.

- Proficiency rates for English learners increased by five percentage points, from 24% to 29%, the highest for any subgroup. Among students fluent in English, English only students posted the highest percentage point gains at four percentage points.

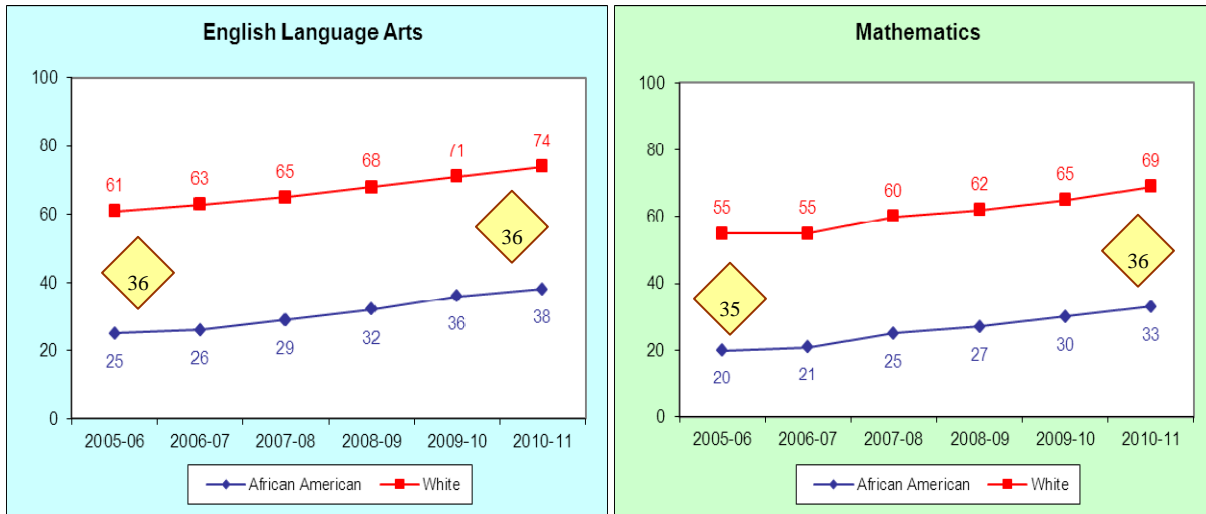
Table 19: Proficiency Rates Increased for Every Subgroup in Mathematics

LAUSD		Percent Proficient or Advanced						Change in Percentage Points		
Mathematics CST		2006	2007	2008	2009	2010	2011	10 to 11	06 to 11	06 - 11 Avg. Change
All Students		31	31	35	37	39	43	4	12	2.4
Gender	Females	30	31	34	37	39	43	4	13	2.6
	Males	31	32	35	37	39	43	4	12	2.4
Ethnicity	African American	20	21	25	27	30	33	3	13	2.6
	American Indian	34	35	37	40	43	46	3	12	2.4
	Asian	67	68	71	72	73	75	2	8	1.6
	Filipino	52	53	57	58	56	59	3	7	1.4
	Latino	27	27	31	33	35	39	4	12	2.4
	Pacific Islander	34	36	39	40	41	45	4	11	2.2
	White	55	55	60	62	65	69	4	14	2.8
Economically Disadvantaged		28	29	32	34	36	40	4	12	2.4
Non-Economically Disadvantaged		42	41	44	50	53	56	3	14	2.8
Students with Disabilities		8	9	11	12	14	18	4	10	2.0
Students with no Reported Disability		33	34	38	40	42	45	3	12	2.4
English Only		35	36	40	42	44	48	4	13	2.6
IFEP		51	52	56	57	57	59	2	8	1.6
RFEP		32	32	36	39	41	44	3	12	2.4
English Learner		22	21	22	23	24	29	5	7	1.4

### Achievement Gap

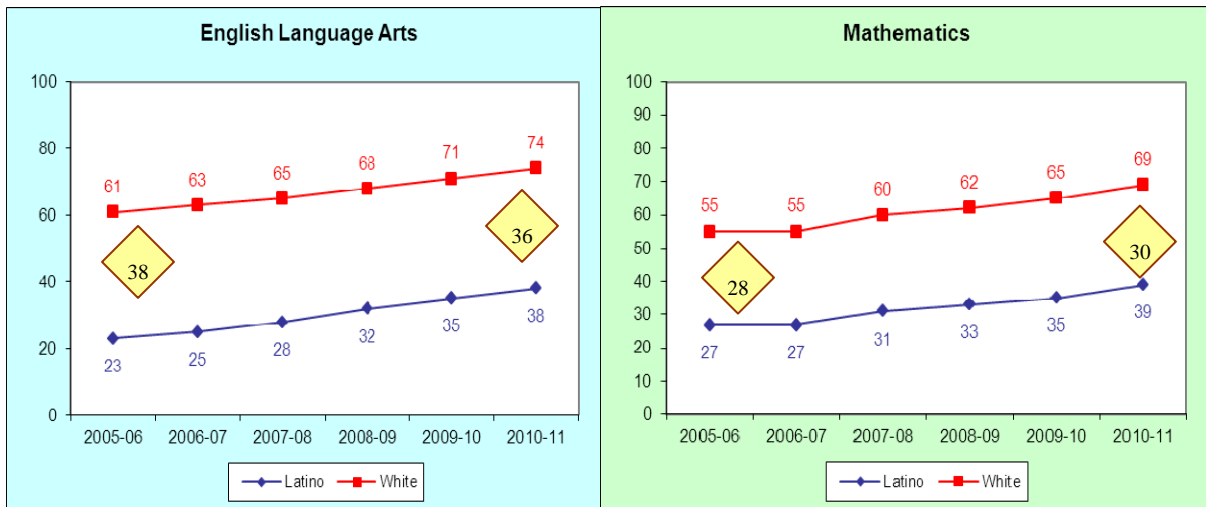
While there were increases in the percentage of African-American, Latino and White students scoring proficient or above in both English language arts and Mathematics, the achievement gap persists. In English language arts, the gap between African-American and White students remained at 36, compared to 2005-06. In Mathematics, the gap increased slightly from 35 to 36 over the same time period.

Chart 20: Achievement Gap Between African-American and White Students Remains the Same



The same achievement gap exists between Latino and White students. In 2011, the gap narrowed slightly in English language arts, from 38 percentage points in 2005-06, to 36 to 2010-11. In Mathematics, the gap increased from 28 to 30 over the same period of time.

Chart 21: Achievement Gap Between Latino and White Students Narrowed in English Language Arts But Widened in Mathematics



### THIRD GRADE PROFICIENCY

Proficiency in English language arts in 3rd grade is a key indicator of future academic success. Third grade proficiency rates increased from 35% to 40% in LAUSD. Compared to other urban districts in California, LAUSD's percentage point gain was among the highest. San Jose had the highest percentage of students scoring proficient or advanced in 3<sup>rd</sup> grade with 54%. LAUSD ranked higher than four other urban districts at 40%.

Table 22: LAUSD's Gains in Third Grade Proficiency Were Among the Highest Compared to Urban Districts

District	2008	2009	2010	2011	1 Year Change
San Jose	42	48	51	54	3
San Francisco	42	47	46	50	4
San Diego	40	48	46	50	4
Pasadena	35	42	42	47	5
Oakland	29	36	40	42	2
Sacramento	32	37	39	40	1
<b>LAUSD</b>	<b>29</b>	<b>34</b>	<b>35</b>	<b>40</b>	<b>5</b>
Pomona	27	33	31	35	4
Fresno	26	31	31	36	5
Santa Ana	22	25	27	32	5
San Bernardino	21	24	24	26	2

### PROFICIENCY IN ALGEBRA

In LAUSD, students in grades 7 through 12 take Algebra and are tested on the Algebra I CST, although the majority of students take it in 8th and 9th grades. Beginning in 2007, students in grade 7 that were enrolled in Algebra took the Algebra CST. The percentage of Algebra test takers in grade 8 has increased since 2007 from 33% to 41% in 2011. During that same time period, the percentage of 9th graders taking the Algebra test has decreased to 41% in 2011.

Table 23: Majority of Algebra Test Takers on the California Standards Tests Were in Grades 8 and 9

	Number of Students Tested						Percentage of Test Takers by Grade Level					
	2006	2007	2008	2009	2010	2011	2006	2007	2008	2009	2010	2011
<b>Algebra I</b>												
All Students	75,170	72,803	76,425	75,025	69,728	68,332						
7th Grade	---	2,337	2,622	3,218	3,306	4,030	0%	3%	3%	4%	5%	6%
8th Grade	26,790	23,668	26,383	26,790	25,844	28,077	36%	33%	35%	36%	37%	41%
9th Grade	34,786	33,780	36,160	35,147	31,335	27,870	46%	46%	47%	47%	45%	41%
10th Grade	10,457	10,147	8,524	7,377	6,933	6,298	14%	14%	11%	10%	10%	9%
11th Grade	3,137	2,871	2,736	2,493	2,310	2,057	4%	4%	4%	3%	3%	3%

Across all grade levels in Algebra (7-11), proficiency rates increased by two percentage points. Proficiency rates in Algebra were highest among 7th graders, at 77%. Only one third of 8th graders tested were proficient or above in Algebra. In 9th grade, only 13% were proficient or above, although there was a two percentage point increase.

When examined over the past five years, proficiency rates in 8th grade grew by 13 percentage points and in 9th grade, increased by five percentage points.

Table 24: Highest Proficiency Rates in Algebra are Among Students in Grades 7 and 8

Algebra I	Percent Proficient or Advanced						Change in Percentage Points		
	2006	2007	2008	2009	2010	2011	10 to 11	06 to 11	06 - 11 Avg. Change
All Students	11	14	16	19	22	24	2	13	2.6
7th Grade	--	61	66	72	79	77	-2	16*	4*
8th Grade	19	21	27	29	32	32	0	13	2.6
9th Grade	8	9	9	11	11	13	2	5	1
10th Grade	5	5	5	6	8	8	0	3	0.6
11th Grade	4	5	5	6	6	8	2	4	0.8

\*Change as of 2007 school year.

Algebra I Comparison to Urban Districts

Among urban districts in California, the percentage of 8<sup>th</sup> graders who were proficient or above in Algebra ranged from 55% in Sacramento to 18% in Pomona. Proficiency rates among 8<sup>th</sup> graders remained flat or declined for most urban districts, except for San Bernardino and Pasadena, which grew incrementally. Scores for 8<sup>th</sup> graders in LAUSD remained at 32% proficiency.

However, it is important to note the percentage of 8<sup>th</sup> graders that were tested. Oakland and San Jose tested the highest percentage of their 8<sup>th</sup> graders (at 83% and 80% respectively) compared to 61% tested in LAUSD. Fresno and Sacramento had the lowest percentage of 8<sup>th</sup> graders tested at 43% and 47% respectively.

Table 25: Proficiency Rates in Algebra Declined or Remained Flat Among Most Urban Districts in California

	% of 8th Graders Tested			% Scoring Proficient or Advanced in Algebra I			1 Year Chg
	2009	2010	2011	2009	2010	2011	
Sacramento	45%	48%	47%	57	58	55	-3
San Francisco	63%	76%	81%	57	56	51	-5
Santa Ana	51%	52%	60%	48	56	52	-4
Fresno	25%	38%	43%	59	51	38	-13
San Diego	66%	66%	65%	38	41	41	0
San Jose	83%	82%	81%	27	32	32	0
<b>LAUSD</b>	53%	54%	61%	28	32	32	0
San Bernardino	55%	62%	74%	30	29	31	2
Pasadena	39%	58%	57%	31	25	26	1
Oakland	73%	83%	80%	24	23	21	-2
Pomona	84%	67%	71%	21	20	18	-2



## **INNOVATION AND REDESIGNED SCHOOLS**

### *Restructured Schools*

Restructuring plans were implemented at Fremont HS in the 2010 school year. There was a two percentage point gain in proficiency in English language arts from 14% to 16%. In Mathematics, proficiency rates increased from 3% to 4%.

At Jordan HS, proficiency in English language arts decreased two percentage points, from 13% to 11%. In Mathematics, proficiency increased from 2% to 3%.

At Clay MS, proficiency rates in English language arts remained at 18%, with no change from the previous year. In Mathematics, proficiency also remained flat at 10% for both years.

### *Public School Choice*

Of the 17 conversion schools in Public School Choice 1.0, 2.0 or 2.5, six schools met or exceeded the District average in percentage point growth in English language arts. Two schools, Garfield HS and San Pedro HS, exceeded the District average in both percentage point growth and proficiency in English language arts. None of the 20 new schools that opened in 2010-11, exceeded the District average in proficiency in English language arts.

In Mathematics, six of the conversion schools met or exceeded the District average in percentage point growth. Garfield SH and Burbank MS exceeded the District average in proficiency and percentage point growth. None of the 20 new schools exceeded the District average in proficiency. See Attachment A for a list of schools.

### *School Improvement Grant (SIG) Schools*

Of the nine schools receiving SIG grants, six schools showed improvement in English language arts and two schools decreased. In Mathematics, only two of the SIG schools posted gains in proficiency. See Attachment B for a list of schools.

### *Partnership Schools*

Among the 21 schools in the Partnership for Los Angeles Schools (PLAS), six schools met or exceeded the District average in growth in percentage points in English language arts. One school, Roosevelt Magnet, exceeded the District average in proficiency in English language arts. In Mathematics, four of the PLAS schools exceeded the District average in growth. None of the PLAS schools exceeded the District average in proficiency in Mathematics.

The two LA Promise schools (Manual Arts and West Adams) exceeded the District average in growth in English language arts and Mathematics but were below the District average in proficiency.

Crenshaw HS decreased proficiency in English language arts by four percentage points, from 22% to 18%. In Mathematics, proficiency decreased from 3% to 2%.

See Attachment C for a list of partnership schools.

## ATTACHMENTS

- Attachment D presents the percentage of students scoring proficient or advanced for LAUSD and each Local District from 2006 through 2011 in English language arts, Mathematics, Science, and History-Social Science.
- Attachment E-1 and E-2 provides a school-by-school listing of the number and percent tested and the percentage of students scoring proficient or advanced in 2008, 2009, 2010 and 2011 for CST English language arts (E-1) Mathematics (E-2). These lists do not include independent charter schools.

If you have additional questions, please contact me at (213) 241-2460.

c: Michelle King  
Jaime Aquino  
Matt Hill  
Tommy Chang  
Local District Superintendents

Attachment A: LAUSD California Standards Test,  
English Language Arts  
Public School Choice Schools

Prefer Locn	School Name (Prefer Locn)	LEVEL	LD	BM	Config	% Free Reduced Lunch	2010-11 Enroll	% EL	% SWD	CST 2008 # TESTED	CST 2009 # TESTED	CST 2010 # TESTED	CST 2011 # TESTED	CST 2008 % Prof. - Adv.	CST 2009 % Prof. - Adv.	CST 2010 % Prof. - Adv.	CST 2011 % Prof. - Adv.	CST % DIFF Prof. - Adv. 08 to 09	CST % DIFF Prof. - Adv. 09 to 10	CST % DIFF Prof. - Adv. 10 to 11	CST 2008 % FBB - BB	CST 2009 % FBB - BB	CST 2010 % FBB - BB	CST 2011 % FBB - BB	CST % DIFF FBB BB 08 to 09	CST % DIFF FBB BB 09 to 10	CST % DIFF FBB BB 10 to 11	PSC
	LAUSD ELEMENTARY (2-5) AVG													39	44	46	50	5	2	4	28	26	24	22	-2	-2	-2	
	LAUSD MIDDLE SCH (6-8) AVG													32	35	38	42	3	3	4	36	33	31	27	-3	-2	-4	
	LAUSD HIGH SCH (9-11) AVG													29	31	34	37	2	3	3	41	38	35	31	-3	-3	-4	
8066	BURBANK MS	MIDDLE	4	5	7-8	71.3%	891	19.2%	15.5%	1,532	1426	1229	822	31	29	33	40	-2	4	7	34	38	30	28	4	-8	-2	1
2939	CARSON-GORE ACADEMY	ELEMENTARY	3	1	K-5	89.1%	650	57.1%	12.8%	-	0	0	379	-	0	0	43	0	0		0	0	0	22	0	0		1
8094	CARVER MS	MIDDLE	T	7	6-8	100.0%	1590	37.3%	11.6%	2,164	1968	1756	1586	16	13	15	17	-3	2	2	53	58	54	50	5	-4	-4	1
2942	CENTRAL REG EL #16	ELEMENTARY	5	7	K-5	92.1%	491	62.1%	9.0%	-	0	0	303	-	0	0	34	0	0		0	0	0	34	0	0		1
6873	ESCALANTE EL	ELEMENTARY	6	5	K-6	79.1%	597	54.9%	11.7%	-	0	0	390	-	0	0	32	0	0		0	0	0	34	0	0		1
8664	GARDENA SH	SENIOR	8	7	9-12	67.1%	2299	16.0%	9.7%	2,287	2128	1845	1677	25	23	26	28	-2	3	2	41	47	43	37	6	-4	-6	1
8679	GARFIELD SH	SENIOR	5	5	9-12	100.0%	2912	20.4%	9.4%	3,424	3366	3068	1692	21	22	32	39	1	10	7	44	44	29	21	0	-15	-8	1
5849	GRIFFITH JOYNER EL	ELEMENTARY	T	7	K-5	100.0%	869	40.9%	9.0%	610	613	589	566	17	20	26	17	3	6	-9	44	45	39	48	1	-6	9	1
4528	HILLCREST DR EL	ELEMENTARY	3	1	K-5	100.0%	756	38.1%	9.9%	633	600	513	519	18	20	23	28	2	3	5	46	49	48	44	3	-1	-4	1
2944	HUERTA EL	ELEMENTARY	T	2	K-5	93.3%	418	68.9%	6.9%	-	0	0	269	-	0	0	28	0	0		0	0	0	40	0	0		1
8700	HUNTINGTON PARK SH	SENIOR	6	5	9-12	84.9%	4080	27.7%	10.1%	3,180	3187	3240	2941	19	21	24	24	2	3	0	50	44	42	44	-6	-2	2	2.5
8714	JEFFERSON SH	SENIOR	5	7	9-12	100.0%	2107	36.1%	12.4%	1,446	1494	1572	1532	12	13	15	15	1	2	0	61	59	55	56	-2	-4	1	1
2943	JONES EL	ELEMENTARY	5	2	K-5	88.4%	320	75.0%	11.6%	-	0	0	197	-	0	0	31	0	0		0	0	0	34	0	0		1
6869	KNOX EL	ELEMENTARY	7	1	K-6	86.4%	786	51.4%	7.9%	-	0	0	514	-	0	0	29	0	0		0	0	0	36	0	0		1
7399	KORENSTEIN EL	ELEMENTARY	2	6	K-5	87.8%	577	55.5%	9.2%	-	0	0	365	-	0	0	33	0	0		0	0	0	32	0	0		1
8729	LINCOLN SH	SENIOR	5	2	9-12	100.0%	2464	25.3%	11.2%	1,993	1992	1875	1622	26	24	29	30	-2	5	1	42	48	40	39	6	-8	-1	1
8236	MANN MS	MIDDLE	3	1	6-8	100.0%	772	17.1%	21.6%	1,244	1100	941	692	13	16	19	17	3	3	-2	55	51	51	52	-4	0	1	2
8882	MAYWOOD ACADEMY SH	SENIOR	6	5	9-12	100.0%	1295	19.4%	9.8%	1,146	1036	909	962	25	30	37	35	5	7	-2	39	34	26	29	-5	-8	3	1
7402	MOSK EL	ELEMENTARY	1	3	K-5	88.2%	287	44.9%	5.9%	-	0	0	185	-	0	0	39	0	0		0	0	0	26	0	0		1
8255	MUIR MS	MIDDLE	7	1	6-8	79.5%	1365	31.5%	12.3%	2,101	1918	1751	1220	15	17	18	23	2	1	5	57	53	55	44	-4	2	-11	2
6868	OBAMA GBLB PREP ACAD	MIDDLE	7	1	6-8	87.2%	1230	21.7%	13.2%	-	0	0	1159	-	0	0	20	0	0		0	0	0	44	0	0		1
8358	SAN FERNANDO MS	MIDDLE	2	6	6-8	80.4%	1553	25.4%	14.7%	1,715	1664	1504	1385	21	24	27	32	3	3	5	43	41	38	36	-2	-3	-2	1
8850	SAN PEDRO SH	SENIOR	8	7	9-12	47.6%	3092	8.2%	11.2%	2,425	2502	2408	2250	36	40	44	46	4	4	2	37	29	27	22	-8	-2	-5	1
6872	SOUTH REGION EL #2	ELEMENTARY	7	7	K-6	89.7%	821	50.7%	6.8%	-	0	0	551	-	0	0	37	0	0		0	0	0	30	0	0		1
6886	SOUTH REGION EL #7	ELEMENTARY	7	7	K-6	88.2%	632	55.2%	5.5%	-	0	0	438	-	0	0	20	0	0		0	0	0	48	0	0		1.5
5153	SOUTH REGION MS #2B	MIDDLE	6	5	6-8	64.2%	403	20.6%	11.2%	-	0	0	384	-	0	0	29	0	0		0	0	0	32	0	0		1
5154	SOUTH REGION MS #2C	MIDDLE	6	5	6-8	57.8%	397	27.2%	11.6%	-	0	0	398	-	0	0	20	0	0		0	0	0	45	0	0		1
8018	SYNERGY KINETIC ACAD	MIDDLE	R	7	6-8	96.6%	357	26.3%	7.8%	-	89	226	339	-	44	53	60	0	9	7	0	17	13	9	0	-4	-4	2
8606	TORRES ELA PERF ARTS	SENIOR	5	5	9-11	83.4%	386	28.8%	10.6%	-	0	0	356	-	0	0	22	0	0		0	0	0	36	0	0		1
7773	TORRES ENG & TECH	SENIOR	5	5	9-11	85.7%	372	30.1%	11.0%	-	0	0	338	-	0	0	25	0	0		0	0	0	35	0	0		1
7775	TORRES HUM/ART/TECH	SENIOR	5	5	9-11	88.0%	366	29.0%	9.3%	-	0	0	352	-	0	0	24	0	0		0	0	0	40	0	0		1
7772	TORRES RENAISSANCE	SENIOR	5	5	9-11	85.1%	361	25.8%	11.4%	-	0	0	309	-	0	0	33	0	0		0	0	0	32	0	0		1
7777	TORRES SOC JST LDSHP	SENIOR	5	5	9-11	86.2%	353	26.6%	11.3%	-	0	0	314	-	0	0	19	0	0		0	0	0	46	0	0		1
7404	VALLEY REGION EL #12	ELEMENTARY	1	6	K-5	86.9%	534	72.8%	8.8%	-	0	0	316	-	0	0	23	0	0		0	0	0	46	0	0		1.5
7398	VALLEY REGION EL #6	ELEMENTARY	1	6	K-5	83.9%	734	66.2%	9.7%	-	0	0	467	-	0	0	26	0	0		0	0	0	40	0	0		1
7400	VALLEY REGION EL #8	ELEMENTARY	2	6	K-5	83.0%	439	49.9%	9.3%	-	0	0	280	-	0	0	39	0	0		0	0	0	24	0	0		1
7401	VALLEY REGION EL #9	ELEMENTARY	2	6	K-5	88.4%	480	57.3%	9.6%	-	0	0	289	-	0	0	36	0	0		0	0	0	29	0	0		1
4658	YES ACADEMY	ELEMENTARY	3	1	K-5	100.0%	661	37.8%	11.0%	459	488	450	416	19	19	24	30	0	5	6	48	48	50	42	0	2	-8	1

Attachment A: LAUSD California Standards Tests,

Mathematics

Public School Choice Schools

Prefer Locn	School Name (Prefer Locn)	LEVEL	LD	BM	Conf ig	% Free Reduced Lunch	# Enroll	% EL	% SWD	CST 2008 # TESTED	CST 2009 # TESTED	CST 2010 # TESTED	CST 2011 # TESTED	CST 2008 % Prof.- Adv.	CST 2009 % Prof.- Adv.	CST 2010 % Prof.- Adv.	CST 2011 % Prof.- Adv.	CST % DIFF Prof.- Adv. 08 to 09	CST % DIFF Prof.- Adv. 09 to 10	CST % DIFF Prof.- Adv. 10 to 11	CST 2008 % FBB - BB	CST 2009 % FBB - BB	CST 2010 % FBB - BB	CST 2011 % FBB - BB	CST % DIFF FBB - BB 08 to 09	CST % DIFF FBB - BB 09 to 10	CST % DIFF FBB - BB 10 to 11	PSC
	LAUSD ELEMENTARY (2-5) AVG													54	57	58	63	3	1	5	23	21	21	18	-2	0	-3	
	LAUSD MIDDLE SCH (6-8) AVG													28	30	36	38	2	6	2	44	42	38	36	-2	-4	-2	
	LAUSD HIGH SCH (9-11) AVG													11	13	14	16	2	1	2	72	70	67	63	-2	-3	-4	
8066	BURBANK MS	MIDDLE	4	5	7-8	71.3%	891	19.2%	15.5%	1,483	1423	1252	824	20	18	31	38	-2	13	7	51	54	46	37	3	-8	-9	1
2939	CARSON-GORE ACADEMY	ELEMENTARY	3	1	K-5	89.1%	650	57.1%	12.8%	-	0	0	386	0	0	0	57	0	0	0	0	0	0	18	0	0	0	1
8094	CARVER MS	MIDDLE	T	7	6-8	100.0%	1590	37.3%	11.6%	2,156	1969	1753	1580	15	11	16	19	-4	5	3	64	67	62	59	3	-5	-3	1
2942	CENTRAL REG EL #16	ELEMENTARY	5	7	K-5	92.1%	491	62.1%	9.0%	-	0	0	306	0	0	0	41	0	0	0	0	0	0	31	0	0	0	1
6873	ESCALANTE EL	ELEMENTARY	6	5	K-6	79.1%	597	54.9%	11.7%	-	0	0	390	0	0	0	48	0	0	0	0	0	0	28	0	0	0	1
8664	GARDENA SH	SENIOR	8	7	9-12	67.1%	2299	16.0%	9.7%	2,101	1967	1666	1578	5	5	6	4	0	1	-2	83	82	80	84	-1	-2	4	1
8679	GARFIELD SH	SENIOR	5	5	9-12	100.0%	2912	20.4%	9.4%	3,168	3105	2760	1633	5	5	9	23	0	4	14	79	81	69	46	2	-12	-23	1
5849	GRIFFITH JOYNER EL	ELEMENTARY	T	7	K-5	100.0%	869	40.9%	9.0%	610	613	589	566	35	32	35	31	-3	3	-4	38	39	39	45	1	0	6	1
4528	HILLCREST DR EL	ELEMENTARY	3	1	K-5	100.0%	756	38.1%	9.9%	635	598	515	519	24	27	29	32	3	2	3	47	50	45	42	3	-5	-3	1
2944	HUERTA EL	ELEMENTARY	T	2	K-5	93.3%	418	68.9%	6.9%	-	0	0	270	0	0	0	41	0	0	0	0	0	0	32	0	0	0	1
8700	HUNTINGTON PARK SH	SENIOR	6	5	9-12	84.9%	4080	27.7%	10.1%	2,828	2921	2874	2632	2	4	5	8	2	1	3	87	85	79	75	-2	-6	-4	2.5
8714	JEFFERSON SH	SENIOR	5	7	9-12	100.0%	2107	36.1%	12.4%	1,394	1485	1572	1527	1	1	2	1	0	1	-1	89	91	88	93	2	-3	5	1
2943	JONES EL	ELEMENTARY	5	2	K-5	88.4%	320	75.0%	11.6%	-	0	0	198	0	0	0	42	0	0	0	0	0	0	30	0	0	0	1
6869	KNOX EL	ELEMENTARY	7	1	K-6	86.4%	786	51.4%	7.9%	-	0	0	516	0	0	0	42	0	0	0	0	0	0	35	0	0	0	1
7399	KORENSTEIN EL	ELEMENTARY	2	6	K-5	87.8%	577	55.5%	9.2%	-	0	0	366	0	0	0	53	0	0	0	0	0	0	22	0	0	0	1
8729	LINCOLN SH	SENIOR	5	2	9-12	100.0%	2464	25.3%	11.2%	1,795	1780	1778	1549	9	10	12	11	1	2	-1	75	77	74	73	2	-3	-1	1
8236	MANN MS	MIDDLE	3	1	6-8	100.0%	772	17.1%	21.6%	1,211	1100	953	707	8	12	14	12	4	2	-2	70	68	64	63	-2	-4	-1	2
8882	MAYWOOD ACADEMY SH	SENIOR	6	5	9-12	100.0%	1295	19.4%	9.8%	1,108	992	848	908	5	8	8	8	3	0	0	80	81	76	72	1	-5	-4	1
7402	MOSK EL	ELEMENTARY	1	3	K-5	88.2%	287	44.9%	5.9%	-	0	0	186	0	0	0	48	0	0	0	0	0	0	29	0	0	0	1
8255	MUIR MS	MIDDLE	7	1	6-8	79.5%	1365	31.5%	12.3%	2,011	1926	1746	1231	12	14	17	18	2	3	1	65	61	58	56	-4	-3	-2	2
6868	OBAMA GLBL PREP ACAD	MIDDLE	7	1	6-8	87.2%	1230	21.7%	13.2%	-	0	0	1164	0	0	0	10	0	0	0	0	0	0	69	0	0	0	1
8358	SAN FERNANDO MS	MIDDLE	2	6	6-8	80.4%	1553	25.4%	14.7%	1,708	1664	1515	1440	19	20	22	32	1	2	10	51	52	46	40	1	-6	-6	1
8850	SAN PEDRO SH	SENIOR	8	7	9-12	47.6%	3092	8.2%	11.2%	2,175	2306	2115	2042	10	13	14	12	3	1	-2	67	68	60	64	1	-8	4	1
6872	SOUTH REGION EL #2	ELEMENTARY	7	7	K-6	89.7%	821	50.7%	6.8%	-	0	0	558	0	0	0	47	0	0	0	0	0	0	31	0	0	0	1
6886	SOUTH REGION EL #7	ELEMENTARY	7	7	K-6	88.2%	632	55.2%	5.5%	-	0	0	438	0	0	0	33	0	0	0	0	0	0	42	0	0	0	1.5
5153	SOUTH REGION MS #2B	MIDDLE	6	5	6-8	64.2%	403	20.6%	11.2%	-	0	0	390	0	0	0	15	0	0	0	0	0	0	52	0	0	0	1
5154	SOUTH REGION MS #2C	MIDDLE	6	5	6-8	57.8%	397	27.2%	11.6%	-	0	0	397	0	0	0	17	0	0	0	0	0	0	55	0	0	0	1
8018	SYNERGY KINETIC ACAD	MIDDLE	R	7	6-8	96.6%	357	26.3%	7.8%	-	89	226	340	0	51	46	56	0	-5	10	0	21	17	14	0	-4	-3	2
8606	TORRES ELA PERF ARTS	SENIOR	5	5	9-11	83.4%	386	28.8%	10.6%	-	0	0	354	0	0	0	3	0	0	0	0	0	0	87	0	0	0	1
7773	TORRES ENG & TECH	SENIOR	5	5	9-11	85.7%	372	30.1%	11.0%	-	0	0	328	0	0	0	7	0	0	0	0	0	0	71	0	0	0	1
7775	TORRES HUM/ART/TECH	SENIOR	5	5	9-11	88.0%	366	29.0%	9.3%	-	0	0	350	0	0	0	3	0	0	0	0	0	0	85	0	0	0	1
7772	TORRES RENAISSANCE	SENIOR	5	5	9-11	85.1%	361	25.8%	11.4%	-	0	0	318	0	0	0	6	0	0	0	0	0	0	72	0	0	0	1
7777	TORRES SOC JST LDSHP	SENIOR	5	5	9-11	86.2%	353	26.6%	11.3%	-	0	0	308	0	0	0	1	0	0	0	0	0	0	92	0	0	0	1
7404	VALLEY REGION EL #12	ELEMENTARY	1	6	K-5	86.9%	534	72.8%	8.8%	-	0	0	319	0	0	0	35	0	0	0	0	0	0	35	0	0	0	1.5
7398	VALLEY REGION EL #6	ELEMENTARY	1	6	K-5	83.9%	734	66.2%	9.7%	-	0	0	469	0	0	0	36	0	0	0	0	0	0	36	0	0	0	1
7400	VALLEY REGION EL #8	ELEMENTARY	2	6	K-5	83.0%	439	49.9%	9.3%	-	0	0	283	0	0	0	62	0	0	0	0	0	0	15	0	0	0	1
7401	VALLEY REGION EL #9	ELEMENTARY	2	6	K-5	88.4%	480	57.3%	9.6%	-	0	0	288	0	0	0	53	0	0	0	0	0	0	24	0	0	0	1
4658	YES ACADEMY	ELEMENTARY	3	1	K-5	100.0%	661	37.8%	11.0%	458	486	450	417	23	27	28	39	4	1	11	50	51	47	40	1	-4	-7	1

Attachment B: LAUSD California Standards Test,  
English Language Arts  
School Improvement Grant (SIG) Schools

Prefer Locn	School Name (Prefer Locn)	LEVEL	LD	BM	Config	% Free Reduced Lunch	2010-11 Enroll	% EL	% SWD	CST 2008 # TESTED	CST 2009 # TESTED	CST 2010 # TESTED	CST 2011 # TESTED	CST 2008 % Prof. - Adv.	CST 2009 % Prof. - Adv.	CST 2010 % Prof. - Adv.	CST 2011 % Prof. - Adv.	CST % DIFF Prof. - Adv. 08 to 09	CST % DIFF Prof. - Adv. 09 to 10	CST % DIFF Prof. - Adv. 10 to 11	CST 2008 % FBB - BB	CST 2009 % FBB - BB	CST 2010 % FBB - BB	CST 2011 % FBB - BB	CST % DIFF FBB BB 08 to 09	CST % DIFF FBB BB 09 to 10	CST % DIFF FBB BB 10 to 11	SIG
	<b>LAUSD ELEMENTARY (2-5) AVG</b>													<b>39</b>	<b>44</b>	<b>46</b>	<b>50</b>	<b>5</b>	<b>2</b>	<b>4</b>	<b>28</b>	<b>26</b>	<b>24</b>	<b>22</b>	<b>-2</b>	<b>-2</b>	<b>-2</b>	
	<b>LAUSD MIDDLE SCH (6-8) AVG</b>													<b>32</b>	<b>35</b>	<b>38</b>	<b>42</b>	<b>3</b>	<b>3</b>	<b>4</b>	<b>36</b>	<b>33</b>	<b>31</b>	<b>27</b>	<b>-3</b>	<b>-2</b>	<b>-4</b>	
	<b>LAUSD HIGH SCH (9-11) AVG</b>													<b>29</b>	<b>31</b>	<b>34</b>	<b>37</b>	<b>2</b>	<b>3</b>	<b>3</b>	<b>41</b>	<b>38</b>	<b>35</b>	<b>31</b>	<b>-3</b>	<b>-3</b>	<b>-4</b>	
8094	CARVER MS	MIDDLE	T	7	6-8	100.0%	1590	37.3%	11.6%	2,164	1968	1756	1586	16	13	15	17	-3	2	2	53	58	54	50	5	-4	-4	SIG
8664	GARDENA SH	SENIOR	8	7	9-12	67.1%	2299	16.0%	9.7%	2,287	2128	1845	1677	25	23	26	28	-2	3	2	41	47	43	37	6	-4	-6	SIG
8160	GOMPERS MS	MIDDLE	T	7	6-8	100.0%	1215	29.8%	17.4%	1,706	1587	1429	1150	14	15	16	18	1	1	2	54	57	56	51	3	-1	-5	SIG
5849	GRIFFITH JOYNER EL	ELEMENTARY	T	7	K-5	100.0%	869	40.9%	9.0%	610	613	589	566	17	20	26	17	3	6	-9	44	45	39	48	1	-6	9	SIG
4528	HILLCREST DR EL	ELEMENTARY	3	1	K-5	100.0%	756	38.1%	9.9%	633	600	513	519	18	20	23	28	2	3	5	46	49	48	44	3	-1	-4	SIG
8714	JEFFERSON SH	SENIOR	5	7	9-12	100.0%	2107	36.1%	12.4%	1,446	1494	1572	1532	12	13	15	15	1	2	0	61	59	55	56	-2	-4	1	SIG
8237	MARKHAM MS	MIDDLE	T	7	6-8	100.0%	1223	22.7%	13.5%	1,451	1419	1213	1170	13	11	15	19	-2	4	4	58	62	54	51	4	-8	-3	SIG
8882	MAYWOOD ACADEMY SH	SENIOR	6	5	9-12	100.0%	1295	19.4%	9.8%	1,146	1036	909	962	25	30	37	35	5	7	-2	39	34	26	29	-5	-8	3	SIG
8387	STEVENSON MS	MIDDLE	T	2	6-8	100.0%	2040	27.2%	11.8%	2,446	2226	2101	1930	21	22	25	26	1	3	1	46	45	43	41	-1	-2	-2	SIG

Attachment B: LAUSD California Standards Tests,  
Mathematics  
School Improvement Grant (SIG) Schools

Prefer Locn	School Name (Prefer Locn)	LEVEL	LD	BM	Conf ig	% Free Reduced Lunch	# Enroll	% EL	% SWD	CST 2008 # TESTED	CST 2009 # TESTED	CST 2010 # TESTED	CST 2011 # TESTED	CST 2008 % Prof. - Adv.	CST 2009 % Prof. - Adv.	CST 2010 % Prof. - Adv.	CST 2011 % Prof. - Adv.	CST % DIFF Prof. - Adv. 08 to 09	CST % DIFF Prof. - Adv. 09 to 10	CST % DIFF Prof. - Adv. 10 to 11	CST 2008 % FBB - BB	CST 2009 % FBB - BB	CST 2010 % FBB - BB	CST 2011 % FBB - BB	CST % DIFF FBB - BB 08 to 09	CST % DIFF FBB - BB 09 to 10	CST % DIFF FBB - BB 10 to 11	SIG
	LAUSD ELEMENTARY (2-5) AVG													54	57	58	63	3	1	5	23	21	21	18	-2	0	-3	
	LAUSD MIDDLE SCH (6-8) AVG													28	30	36	38	2	6	2	44	42	38	36	-2	-4	-2	
	LAUSD HIGH SCH (9-11) AVG													11	13	14	16	2	1	2	72	70	67	63	-2	-3	-4	
8094	CARVER MS	MIDDLE	T	7	6-8	100.0%	1590	37.3%	11.6%	2,156	1969	1753	1580	15	11	16	19	-4	5	3	64	67	62	59	3	-5	-3	SIG
8664	GARDENA SH	SENIOR	8	7	9-12	67.1%	2299	16.0%	9.7%	2,101	1967	1666	1578	5	5	6	4	0	1	-2	83	82	80	84	-1	-2	4	SIG
8160	GOMPERS MS	MIDDLE	T	7	6-8	100.0%	1215	29.8%	17.4%	1,682	1586	1428	1148	11	12	16	14	1	4	-2	66	66	59	65	0	-7	6	SIG
5849	GRIFFITH JOYNER EL	ELEMENTARY	T	7	K-5	100.0%	869	40.9%	9.0%	610	613	589	566	35	32	35	31	-3	3	-4	38	39	39	45	1	0	6	SIG
4528	HILLCREST DR EL	ELEMENTARY	3	1	K-5	100.0%	756	38.1%	9.9%	635	598	515	519	24	27	29	32	3	2	3	47	50	45	42	3	-5	-3	SIG
8714	JEFFERSON SH	SENIOR	5	7	9-12	100.0%	2107	36.1%	12.4%	1,394	1485	1572	1527	1	1	2	1	0	1	-1	89	91	88	93	2	-3	5	SIG
8237	MARKHAM MS	MIDDLE	T	7	6-8	100.0%	1223	22.7%	13.5%	1,292	1402	1213	1155	8	7	15	15	-1	8	0	71	74	61	63	3	-13	2	SIG
8882	MAYWOOD ACADEMY SH	SENIOR	6	5	9-12	100.0%	1295	19.4%	9.8%	1,108	992	848	908	5	8	8	8	3	0	0	80	81	76	72	1	-5	-4	SIG
8387	STEVENSON MS	MIDDLE	T	2	6-8	100.0%	2040	27.2%	11.8%	2,413	2248	2113	1932	19	19	25	22	0	6	-3	50	52	45	51	2	-7	6	SIG

Attachment C: LAUSD California Standards Test,

English Language Arts

Partnership Schools

Prefer Locn	School Name (Prefer Locn)	LEVEL	LD	BM	Config	% Free Reduced Lunch	2010-11 Enroll	% EL	% SWD	CST 2008 # TESTED	CST 2009 # TESTED	CST 2010 # TESTED	CST 2011 # TESTED	CST 2008 % Prof. - Adv.	CST 2009 % Prof. - Adv.	CST 2010 % Prof. - Adv.	CST 2011 % Prof. - Adv.	CST % DIFF Prof. - Adv. 08 to 09	CST % DIFF Prof. - Adv. 09 to 10	CST % DIFF Prof. - Adv. 10 to 11	CST 2008 % FBB - BB	CST 2009 % FBB - BB	CST 2010 % FBB - BB	CST 2011 % FBB - BB	CST % DIFF FBB BB 08 to 09	CST % DIFF FBB BB 09 to 10	CST % DIFF FBB BB 10 to 11	PARTNER
	LAUSD ELEMENTARY (2-5) AVG													39	44	46	50	5	2	4	28	26	24	22	-2	-2	-2	
	LAUSD MIDDLE SCH (6-8) AVG													32	35	38	42	3	3	4	36	33	31	27	-3	-2	-4	
	LAUSD HIGH SCH (9-11) AVG													29	31	34	37	2	3	3	41	38	35	31	-3	-3	-4	
8596	CRENSHAW SH	SENIOR	T	1	9-12	93.6%	1676	10.4%	16.1%	1,372	1481	1242	1157	20	19	22	18	-1	3	-4	48	53	47	50	5	-6	3	GCEP
8344	WOODLAND HILLS ACAD	MIDDLE	T	4	6-8	48.6%	1308	9.8%	12.5%	964	1091	1260	1300	48	54	57	55	6	3	-2	21	19	16	18	-2	-3	2	LD 1 PART
8493	WRIGHT MS	MIDDLE	T	4	6-8	50.4%	904	3.1%	12.4%	1,088	1024	936	835	45	48	51	54	3	3	3	22	21	18	19	-1	-3	1	LD 3 PART
8743	MANUAL ARTS SH	SENIOR	T	1	9-12	89.5%	3460	32.9%	11.2%	2,250	2543	2708	2245	13	14	15	18	1	1	3	57	56	56	48	-1	0	-8	MLA
8748	WEST ADAMS PREP SH	SENIOR	T	2	9-12	100.0%	2491	31.0%	12.6%	1,970	2015	2053	1576	15	17	19	22	2	2	3	54	51	46	40	-3	-5	-6	MLA
5534	99TH ST EL	ELEMENTARY	T	7	K-6	100.0%	585	39.7%	7.9%	317	326	316	364	23	38	43	42	15	5	-1	43	34	28	26	-9	-6	-2	PLAS
8094	CARVER MS	MIDDLE	T	7	6-8	100.0%	1590	37.3%	11.6%	2,164	1968	1756	1586	16	13	15	17	-3	2	2	53	58	54	50	5	-4	-4	PLAS
3822	FIGUEROA EL	ELEMENTARY	T	7	1-5	100.0%	448	46.4%	10.0%	518	500	450	416	28	32	33	36	4	1	3	35	39	35	36	4	-4	1	PLAS
8160	GOMPERS MS	MIDDLE	T	7	6-8	100.0%	1215	29.8%	17.4%	1,706	1587	1429	1150	14	15	16	18	1	1	2	54	57	56	51	3	-1	-5	PLAS
5849	GRIFFITH JOYNER EL	ELEMENTARY	T	7	K-5	100.0%	869	40.9%	9.0%	610	613	589	566	17	20	26	17	3	6	-9	44	45	39	48	1	-6	9	PLAS
8179	HOLLENBECK MS	MIDDLE	T	2	6-8	84.3%	1504	24.3%	14.3%	2,369	1998	1572	1389	21	25	26	30	4	1	4	48	43	41	38	-5	-2	-3	PLAS
2944	HUERTA EL	ELEMENTARY	T	2	K-5	93.3%	418	68.9%	6.9%	-	0	0	269	-	0	0	28	0	0	0	0	0	0	40	0	0	0	PLAS
8237	MARKHAM MS	MIDDLE	T	7	6-8	100.0%	1223	22.7%	13.5%	1,451	1419	1213	1170	13	11	15	19	-2	4	4	58	62	54	51	4	-8	-3	PLAS
7784	MENDEZ LC ENG/TECH	SENIOR	T	2	9-12	82.3%	496	24.2%	12.3%	-	0	359	297	-	0	22	28	0	0	6	0	0	48	35	0	48	-13	PLAS
8611	MENDEZ LC MATH/SCI	SENIOR	T	2	9-12	79.1%	452	18.6%	9.1%	-	0	344	302	-	0	19	22	0	0	3	0	0	46	45	0	46	-1	PLAS
6301	RITTER EL	ELEMENTARY	T	7	K-5	100.0%	386	46.1%	6.5%	260	275	248	226	17	26	25	29	9	-1	4	41	39	46	36	-2	7	-10	PLAS
7749	ROOSEVELT HS CMNT	SENIOR	T	2	9-12	100.0%	524	39.3%	14.7%	-	3444	2756	388	-	21	26	17	0	5	-9	0	45	40	52	0	-5	12	PLAS
7750	ROOSEVELT HS ESP	SENIOR	T	2	9-12	80.7%	299	23.4%	7.0%	-	0	0	234	-	0	0	21	0	0	0	0	0	0	43	0	0	0	PLAS
7746	ROOSEVELT HS HARTS	SENIOR	T	2	9-12	100.0%	504	31.5%	16.7%	-	0	0	348	-	0	0	22	0	0	0	0	0	0	41	0	0	0	PLAS
7745	ROOSEVELT HS LAW/GOV	SENIOR	T	2	9-12	100.0%	507	38.1%	10.5%	-	0	0	380	-	0	0	20	0	0	0	0	0	0	46	0	0	0	PLAS
7751	ROOSEVELT HS MAGNET	SENIOR	T	2	9-12	100.0%	373	10.2%	2.4%	-	0	0	292	-	0	0	51	0	0	0	0	0	0	15	0	0	0	PLAS
7748	ROOSEVELT HS MED	SENIOR	T	2	9-12	100.0%	531	27.9%	14.7%	-	0	0	368	-	0	0	21	0	0	0	0	0	0	42	0	0	0	PLAS
7747	ROOSEVELT HS STEM	SENIOR	T	2	9-12	100.0%	517	22.8%	13.5%	-	0	0	370	-	0	0	25	0	0	0	0	0	0	36	0	0	0	PLAS
8716	SANTEE EDUC COMPLEX	SENIOR	T	2	9-12	73.0%	2804	38.3%	10.2%	2,612	2310	2004	1957	11	13	15	16	2	2	1	57	58	53	50	1	-5	-3	PLAS
8387	STEVENSON MS	MIDDLE	T	2	6-8	100.0%	2040	27.2%	11.8%	2,446	2226	2101	1930	21	22	25	26	1	3	1	46	45	43	41	-1	-2	-2	PLAS
6988	SUNRISE EL	ELEMENTARY	T	2	K-6	100.0%	519	57.4%	14.8%	311	286	281	330	32	40	31	40	8	-9	9	42	30	35	26	-12	5	-9	PLAS

Attachment C: LAUSD California Standards Tests,  
Mathematics  
Partnership Schools

Prefer Locn	School Name (Prefer Locn)	LEVEL	LD	BM	Conf ig	% Free Reduced Lunch	# Enroll	% EL	% SWD	CST 2008 # TESTED	CST 2009 # TESTED	CST 2010 # TESTED	CST 2011 # TESTED	CST 2008 % Prof. - Adv.	CST 2009 % Prof. - Adv.	CST 2010 % Prof. - Adv.	CST 2011 % Prof. - Adv.	CST % DIFF Prof. - Adv. 08 to 09	CST % DIFF Prof. - Adv. 09 to 10	CST % DIFF Prof. - Adv. 10 to 11	CST 2008 % FBB - BB	CST 2009 % FBB - BB	CST 2010 % FBB - BB	CST 2011 % FBB - BB	CST % DIFF FBB - BB 08 to 09	CST % DIFF FBB - BB 09 to 10	CST % DIFF FBB - BB 10 to 11	PARTNER	
	LAUSD ELEMENTARY (2-5) AVG													54	57	58	63	3	1	5	23	21	21	18	-2	0	-3		
	LAUSD MIDDLE SCH (6-8) AVG													28	30	36	38	2	6	2	44	42	38	36	-2	-4	-2		
	LAUSD HIGH SCH (9-11) AVG													11	13	14	16	2	1	2	72	70	67	63	-2	-3	-4		
8596	CRENSHAW SH	SENIOR	T	1	9-12	93.6%	1676	10.4%	16.1%	1,142	1353	1154	1081	2	2	3	2	0	1	-1	85	90	88	89	5	-2	1	GCEP	
8344	WOODLAND HILLS ACAD	MIDDLE	T	4	6-8	48.6%	1308	9.8%	12.5%	963	1091	1259	1295	43	43	49	45	0	6	-4	29	27	23	25	-2	-4	2	LD 1 PART	
8493	WRIGHT MS	MIDDLE	T	4	6-8	50.4%	904	3.1%	12.4%	992	1024	935	844	26	36	41	30	10	5	-11	39	34	28	40	-5	-6	12	LD 3 PART	
8743	MANUAL ARTS SH	SENIOR	T	1	9-12	89.5%	3460	32.9%	11.2%	2,026	2372	2512	2113	3	3	3	6	0	0	3	87	86	87	84	-1	-1	-3	MLA	
8748	WEST ADAMS PREP SH	SENIOR	T	2	9-12	100.0%	2491	31.0%	12.6%	1,900	1878	1824	1487	2	5	6	9	3	1	3	88	84	83	74	-4	-1	-9	MLA	
5534	99TH ST EL	ELEMENTARY	T	7	K-6	100.0%	585	39.7%	7.9%	314	325	316	364	39	53	58	58	14	5	0	39	28	19	21	-11	-9	2	PLAS	
8094	CARVER MS	MIDDLE	T	7	6-8	100.0%	1590	37.3%	11.6%	2,156	1969	1753	1580	15	11	16	19	-4	5	3	64	67	62	59	3	-5	-3	PLAS	
3822	FIGUEROA EL	ELEMENTARY	T	7	1-5	100.0%	448	46.4%	10.0%	518	502	450	416	46	48	48	55	2	0	7	30	30	29	26	0	-1	-3	PLAS	
8160	GOMPERS MS	MIDDLE	T	7	6-8	100.0%	1215	29.8%	17.4%	1,682	1586	1428	1148	11	12	16	14	1	4	-2	66	66	59	65	0	-7	6	PLAS	
5849	GRIFFITH JOYNER EL	ELEMENTARY	T	7	K-5	100.0%	869	40.9%	9.0%	610	613	589	566	35	32	35	31	-3	3	-4	38	39	39	45	1	0	6	PLAS	
8179	HOLLENBECK MS	MIDDLE	T	2	6-8	84.3%	1504	24.3%	14.3%	2,141	2015	1576	1391	11	17	22	22	6	5	0	64	57	55	53	-7	-2	-2	PLAS	
2944	HUERTA EL	ELEMENTARY	T	2	K-5	93.3%	418	68.9%	6.9%	-	0	0	270	0	0	0	41	0	0	0	0	0	0	0	32	0	0	0	PLAS
8237	MARKHAM MS	MIDDLE	T	7	6-8	100.0%	1223	22.7%	13.5%	1,292	1402	1213	1155	8	7	15	15	-1	8	0	71	74	61	63	3	-13	2	PLAS	
7784	MENDEZ LC ENG/TECH	SENIOR	T	2	9-12	82.3%	496	24.2%	12.3%	-	0	358	300	0	0	1	4	0	0	3	0	0	88	82	0	88	-6	PLAS	
8611	MENDEZ LC MATH/SCI	SENIOR	T	2	9-12	79.1%	452	18.6%	9.1%	-	0	342	272	0	0	2	4	0	0	2	0	0	90	85	0	90	-5	PLAS	
6301	RITTER EL	ELEMENTARY	T	7	K-5	100.0%	386	46.1%	6.5%	259	274	248	226	41	35	40	52	-6	5	12	33	37	31	25	4	-6	-6	PLAS	
7749	ROOSEVELT HS CMNT	SENIOR	T	2	9-12	100.0%	524	39.3%	14.7%	-	3349	2724	369	0	4	6	3	0	2	-3	0	82	78	87	0	-4	9	PLAS	
7750	ROOSEVELT HS ESP	SENIOR	T	2	9-12	80.7%	299	23.4%	7.0%	-	0	0	225	0	0	0	2	0	0	0	0	0	0	89	0	0	0	PLAS	
7746	ROOSEVELT HS HARTS	SENIOR	T	2	9-12	100.0%	504	31.5%	16.7%	-	0	0	335	0	0	0	3	0	0	0	0	0	0	89	0	0	0	PLAS	
7745	ROOSEVELT HS LAW/GOV	SENIOR	T	2	9-12	100.0%	507	38.1%	10.5%	-	0	0	377	0	0	0	3	0	0	0	0	0	0	86	0	0	0	PLAS	
7751	ROOSEVELT HS MAGNET	SENIOR	T	2	9-12	100.0%	373	10.2%	2.4%	-	0	0	277	0	0	0	16	0	0	0	0	0	0	56	0	0	0	PLAS	
7748	ROOSEVELT HS MED	SENIOR	T	2	9-12	100.0%	531	27.9%	14.7%	-	0	0	354	0	0	0	3	0	0	0	0	0	0	92	0	0	0	PLAS	
7747	ROOSEVELT HS STEM	SENIOR	T	2	9-12	100.0%	517	22.8%	13.5%	-	0	0	354	0	0	0	11	0	0	0	0	0	0	70	0	0	0	PLAS	
8716	SANTEE EDUC COMPLEX	SENIOR	T	2	9-12	73.0%	2804	38.3%	10.2%	2,086	2170	1903	1880	1	3	1	2	2	-2	1	91	90	90	88	-1	0	-2	PLAS	
8387	STEVENSON MS	MIDDLE	T	2	6-8	100.0%	2040	27.2%	11.8%	2,413	2248	2113	1932	19	19	25	22	0	6	-3	50	52	45	51	2	-7	6	PLAS	
6988	SUNRISE EL	ELEMENTARY	T	2	K-6	100.0%	519	57.4%	14.8%	311	286	281	330	47	54	50	49	7	-4	-1	34	26	28	26	-8	2	-2	PLAS	



**Attachment D**

**LAUSD California Standards Test  
Percentage of Students Scoring Proficient/Advanced, 2006-2011**

LAUSD								Change in Percentage	
Subject	CST	2006	2007	2008	2009	2010	2011	'10-'11	'06-'11
English Language Arts	Grade 2	39	43	44	48	49	52	3	13
	Grade 3	27	28	29	34	35	40	5	13
	Grade 4	38	40	45	51	54	57	3	19
	Grade 5	31	33	37	42	48	51	3	20
	Grade 6	26	26	33	37	39	42	3	16
	Grade 7	28	30	34	38	39	44	5	16
	Grade 8	27	25	31	31	37	42	5	15
	Grade 9	24	30	31	32	36	37	1	13
	Grade 10	24	24	29	31	33	36	3	12
	Grade 11	26	29	27	31	34	37	3	11
Math	Grade 2	53	54	56	57	54	60	6	7
	Grade 3	51	54	57	60	59	67	8	16
	Grade 4	47	50	58	59	63	67	4	20
	Grade 5	40	43	48	53	55	60	5	20
	Grade 6	27	26	31	35	39	41	2	14
	Grade 7	25	23	28	28	34	36	2	11
	General Math	12	9	15	17	20	23	3	11
	Algebra I	12	14	17	19	22	24	2	12
	Geometry	10	10	11	14	14	17	3	7
	Algebra 2	11	12	13	14	16	17	1	6
HS Summative	32	30	29	30	35	37	2	5	
Science	Grade 5	23	29	40	40	47	51	4	28
	Grade 8	24	29	40	41	46	51	5	27
	Grade 10	20	21	25	30	32	35	3	15
	ICS I	4	5	7	8	12	13	1	9
	Biology	18	20	24	24	28	31	3	13
	Chemistry	9	12	12	14	16	16	0	7
	Physics	16	14	18	20	24	29	5	13
	Earth Sci.	17	20	21	26	30	31	1	14
History	Grade 8	20	21	25	30	35	41	6	21
	World History	18	15	18	22	27	28	1	10
	US History	23	24	25	31	33	37	4	14

**Attachment D**

**LAUSD California Standards Test by Local District  
Percentage of Students Scoring Proficient/Advanced, 2006-2011**

Local District 1								Change in Percentage	
Subject	CST	2006	2007	2008	2009	2010	2011	'10-'11	'06-'11
English/Language Arts	Grade 2	51	55	55	58	58	61	3	10
	Grade 3	39	39	40	45	44	49	5	10
	Grade 4	51	54	57	63	63	66	3	15
	Grade 5	44	46	50	53	59	62	3	18
	Grade 6	39	38	45	51	50	54	4	15
	Grade 7	44	45	48	53	54	57	3	13
	Grade 8	42	40	46	45	51	59	8	17
	Grade 9	35	42	42	45	48	47	-1	12
	Grade 10	36	35	40	41	44	46	2	10
	Grade 11	41	45	39	42	44	48	4	7
Mathematics	Grade 2	63	64	65	65	61	68	7	5
	Grade 3	63	64	68	69	67	76	9	13
	Grade 4	60	62	68	69	71	74	3	14
	Grade 5	52	55	60	63	64	67	3	15
	Grade 6	41	37	42	47	48	52	4	11
	Grade 7	40	36	42	41	47	48	1	8
	General Math	23	17	26	30	32	32	0	9
	Algebra 1	25	28	31	36	36	40	4	15
	Geometry	27	26	28	33	31	31	0	4
	Algebra 2	30	30	33	31	32	35	3	5
	HS Summative	50	57	54	58	62	61	-1	11
Science	Grade 5	35	42	53	53	59	62	3	27
	Grade 8	41	42	55	55	58	65	7	24
	Grade 10	31	32	38	41	45	48	3	17
	ICS I	8	10	13	14	18	21	3	13
	Biology	33	32	36	38	43	42	-1	9
	Chemistry	17	22	23	28	30	29	-1	12
	Physics	31	38	44	51	62	59	-3	28
	Earth Sci.	32	32	27	26	23	27	4	-5
History	Grade 8	35	36	41	44	48	57	9	22
	World History	25	24	27	32	37	36	-1	11
	US History	35	36	35	41	43	47	4	12

**Attachment D**

**LAUSD California Standards Test by Local District  
Percentage of Students Scoring Proficient/Advanced, 2006-2011**

Local District 2								Change in Percentage	
Subject	CST	2006	2007	2008	2009	2010	2011	'10-'11	'06-'11
English/Language Arts	Grade 2	40	43	43	46	48	53	5	13
	Grade 3	26	28	27	32	34	42	8	16
	Grade 4	39	41	46	51	53	58	5	19
	Grade 5	33	35	37	43	48	52	4	19
	Grade 6	25	26	31	35	39	41	2	16
	Grade 7	30	30	33	37	38	46	8	16
	Grade 8	29	28	29	30	38	42	4	13
	Grade 9	25	32	34	33	38	39	1	14
	Grade 10	25	25	30	33	34	37	3	12
	Grade 11	27	29	27	31	35	38	3	11
Mathematics	Grade 2	53	54	53	54	53	62	9	9
	Grade 3	51	54	56	57	59	70	11	19
	Grade 4	48	50	56	58	61	68	7	20
	Grade 5	42	45	48	51	54	60	6	18
	Grade 6	27	26	31	34	40	40	0	13
	Grade 7	27	26	28	31	35	38	3	11
	General Math	13	12	20	19	30	26	-4	13
	Algebra I	12	14	15	18	21	25	4	13
	Geometry	9	9	10	14	14	17	3	8
	Algebra 2	11	12	15	13	17	18	1	7
	HS Summative	36	38	39	39	40	46	6	10
Science	Grade 5	24	31	41	40	45	50	5	26
	Grade 8	23	30	39	38	46	49	3	26
	Grade 10	20	20	25	32	32	37	5	17
	ICS I	4	5	7	7	11	11	0	7
	Biology	16	16	25	21	25	30	5	14
	Chemistry	10	11	13	15	15	17	2	7
	Physics	15	16	20	29	28	29	1	14
	Earth Sci.	17	19	23	31	39	40	1	23
History	Grade 8	21	24	25	28	36	39	3	18
	World History	19	14	19	23	27	30	3	11
	US History	24	23	25	32	34	39	5	15

**Attachment D**

**LAUSD California Standards Test by Local District  
Percentage of Students Scoring Proficient/Advanced, 2006-2011**

Local District 3								Change in Percentage	
Subject	CST	2006	2007	2008	2009	2010	2011	'10-'11	'06-'11
English Language Arts	Grade 2	48	52	51	56	56	61	5	13
	Grade 3	36	37	38	43	44	48	4	12
	Grade 4	47	49	53	59	61	63	2	16
	Grade 5	38	41	47	51	57	60	3	22
	Grade 6	34	35	42	47	51	53	2	19
	Grade 7	34	38	42	47	51	57	6	23
	Grade 8	34	32	38	40	48	54	6	20
	Grade 9	27	32	35	37	39	43	4	16
	Grade 10	27	27	32	35	38	42	4	15
	Grade 11	30	34	33	36	38	42	4	12
Math	Grade 2	60	62	61	64	60	67	7	7
	Grade 3	59	59	63	65	64	69	5	10
	Grade 4	52	56	62	65	67	72	5	20
	Grade 5	47	48	54	57	60	63	3	16
	Grade 6	36	35	39	44	49	52	3	16
	Grade 7	30	27	30	30	37	41	4	11
	General Math	12	11	17	17	20	30	10	18
	Algebra 1	15	20	25	26	30	34	4	19
	Geometry	17	16	19	22	21	24	3	7
	Algebra 2	14	16	14	17	19	20	1	6
	HS Summative	38	28	34	34	40	43	3	5
Science	Grade 5	30	36	47	49	56	59	3	29
	Grade 8	29	36	46	49	56	62	6	33
	Grade 10	22	25	32	34	38	43	5	21
	ICS I	5	5	10	7	13	10	-3	5
	Biology	20	26	35	33	34	42	8	22
	Chemistry	11	14	16	19	25	22	-3	11
	Physics	24	12	15	18	20	24	4	0
	Earth Sci.	15	26	20	57	43	59	16	44
History	Grade 8	27	28	32	40	46	54	8	27
	World History	19	17	22	25	27	33	6	14
	US History	25	28	29	33	35	39	4	14

**Attachment D**

**LAUSD California Standards Test by Local District  
Percentage of Students Scoring Proficient/Advanced, 2006-2011**

Local District 4								Change in Percentage	
Subject	CST	2006	2007	2008	2009	2010	2011	'10-'11	'06-'11
English/Language Arts	Grade 2	38	42	45	48	49	52	3	14
	Grade 3	27	28	30	35	36	39	3	12
	Grade 4	39	41	45	52	56	60	4	21
	Grade 5	33	34	38	42	49	53	4	20
	Grade 6	25	26	31	37	37	44	7	19
	Grade 7	26	29	33	36	36	41	5	15
	Grade 8	23	23	29	30	34	41	7	18
	Grade 9	24	30	31	34	39	40	1	16
	Grade 10	25	26	29	33	37	37	0	12
	Grade 11	26	31	28	33	36	39	3	13
Mathematics	Grade 2	56	56	59	60	56	62	6	6
	Grade 3	55	56	62	64	62	68	6	13
	Grade 4	51	55	60	62	66	70	4	19
	Grade 5	45	48	53	55	57	61	4	16
	Grade 6	29	29	33	37	41	45	4	16
	Grade 7	25	25	30	29	35	35	0	10
	General Math	3	4	10	12	17	17	0	14
	Algebra 1	8	10	16	19	22	23	1	15
	Geometry	7	8	9	11	12	14	2	7
	Algebra 2	9	7	9	10	13	14	1	5
	HS Summative	23	21	21	20	28	29	1	6
Science	Grade 5	24	30	42	41	50	53	3	29
	Grade 8	23	29	40	42	44	51	7	28
	Grade 10	23	24	26	34	34	36	2	13
	ICS I	3	3	3	3	6	7	1	4
	Biology	22	22	26	28	30	33	3	11
	Chemistry	9	16	11	14	15	14	-1	5
	Physics	13	5	12	13	19	25	6	12
	Earth Sci.	30	38	45	50	58	41	-17	11
History	Grade 8	18	18	24	29	31	39	8	21
	World History	21	18	19	27	30	31	1	10
	US History	23	27	27	34	35	39	4	16

**Attachment D**

**LAUSD California Standards Test by Local District  
Percentage of Students Scoring Proficient/Advanced, 2006-2011**

Local District 5								Change in Percentage	
Subject	CST	2006	2007	2008	2009	2010	2011	'10-'11	'06-'11
English/Language Arts	Grade 2	29	33	34	38	42	42	0	13
	Grade 3	15	18	19	24	25	29	4	14
	Grade 4	28	30	35	40	44	48	4	20
	Grade 5	22	24	29	32	38	40	2	18
	Grade 6	17	19	25	29	33	36	3	19
	Grade 7	20	22	24	30	30	37	7	17
	Grade 8	17	16	22	22	27	35	8	18
	Grade 9	21	27	29	27	36	33	-3	12
	Grade 10	20	22	27	27	31	33	2	13
	Grade 11	23	27	26	29	32	35	3	12
Mathematics	Grade 2	47	48	49	49	47	52	5	5
	Grade 3	42	45	49	51	52	59	7	17
	Grade 4	37	41	48	51	55	60	5	23
	Grade 5	32	33	39	43	46	53	7	21
	Grade 6	22	21	28	30	34	38	4	16
	Grade 7	20	15	20	17	24	27	3	7
	General Math	3	5	6	7	8	11	3	8
	Algebra 1	8	10	13	14	18	20	2	12
	Geometry	6	9	9	11	14	14	0	8
	Algebra 2	9	10	11	13	14	16	2	7
	HS Summative	35	30	28	27	33	35	2	0
Science	Grade 5	14	20	29	29	36	41	5	27
	Grade 8	19	24	33	33	39	49	10	30
	Grade 10	17	18	21	23	26	32	6	15
	ICS I	1	2	3	1	7	7	0	6
	Biology	16	18	22	20	26	26	0	10
	Chemistry	9	14	13	11	12	14	2	5
	Physics	18	14	25	19	25	30	5	12
	Earth Sci.	9	13	11	17	19	13	-6	4
History	Grade 8	11	12	16	19	25	32	7	21
	World History	14	12	14	16	23	23	0	9
	US History	20	24	23	25	28	32	4	12

**Attachment D**

**LAUSD California Standards Test by Local District  
Percentage of Students Scoring Proficient/Advanced, 2006-2011**

Local District 6								Change in Percentage	
Subject	CST	2006	2007	2008	2009	2010	2011	'10-'11	'06-'11
English/Language Arts	Grade 2	33	37	42	48	47	50	3	17
	Grade 3	20	23	25	31	32	35	3	15
	Grade 4	33	33	42	48	51	54	3	21
	Grade 5	24	28	31	38	42	45	3	21
	Grade 6	17	19	27	28	34	32	-2	15
	Grade 7	20	23	26	32	29	36	7	16
	Grade 8	17	16	23	23	30	31	1	14
	Grade 9	18	23	23	25	30	32	2	14
	Grade 10	17	17	23	25	28	29	1	12
	Grade 11	19	20	17	25	28	31	3	12
Mathematics	Grade 2	50	50	55	57	53	57	4	7
	Grade 3	47	52	57	61	59	65	6	18
	Grade 4	43	45	56	57	63	66	3	23
	Grade 5	34	39	45	55	53	58	5	24
	Grade 6	18	19	27	28	37	34	-3	16
	Grade 7	17	16	23	24	31	30	-1	13
	General Math	3	3	8	9	10	12	2	9
	Algebra 1	7	7	11	17	20	19	-1	12
	Geometry	3	3	6	9	8	13	5	10
	Algebra 2	6	5	7	9	11	15	4	9
	HS Summative	18	14	10	17	21	22	1	4
Science	Grade 5	16	22	31	35	41	43	2	27
	Grade 8	15	20	33	37	45	42	-3	27
	Grade 10	10	12	19	24	28	29	1	19
	ICS I	2	2	4	6	12	12	0	10
	Biology	8	11	15	18	22	30	8	22
	Chemistry	1	3	5	6	13	11	-2	10
	Physics	6	10	9	12	23	38	15	32
	Earth Sci.	38	38	37	40	33	51	18	13
History	Grade 8	12	14	21	27	33	34	1	22
	World History	12	9	14	19	26	28	2	16
	US History	18	16	19	27	31	33	2	15

**Attachment D**

**LAUSD California Standards Test by Local District  
Percentage of Students Scoring Proficient/Advanced, 2006-2011**

Local District 7								Change in Percentage	
Subject	CST	2006	2007	2008	2009	2010	2011	'10-'11	'06-'11
English/Language Arts	Grade 2	29	32	34	39	39	43	4	14
	Grade 3	17	19	19	25	28	31	3	14
	Grade 4	27	27	34	40	43	48	5	21
	Grade 5	19	22	26	32	38	41	3	22
	Grade 6	13	12	18	21	21	28	7	15
	Grade 7	16	17	20	23	22	27	5	11
	Grade 8	15	13	17	18	21	27	6	12
	Grade 9	17	25	22	22	26	26	0	9
	Grade 10	17	15	23	23	23	25	2	8
	Grade 11	18	20	19	25	24	27	3	9
Mathematics	Grade 2	44	46	48	50	46	53	7	9
	Grade 3	39	44	48	52	53	59	6	20
	Grade 4	36	40	49	51	55	60	5	24
	Grade 5	29	34	39	44	49	52	3	23
	Grade 6	13	11	16	20	21	24	3	11
	Grade 7	12	13	16	14	24	25	1	13
	General Math	5	3	7	7	6	17	11	12
	Algebra 1	7	7	9	12	14	16	2	9
	Geometry	2	1	3	4	7	7	0	5
	Algebra 2	1	2	3	5	6	6	0	5
	HS Summative	7	7	8	10	18	16	-2	9
Science	Grade 5	13	19	30	31	39	42	3	29
	Grade 8	14	19	24	28	30	33	3	19
	Grade 10	15	12	18	23	23	26	3	11
	ICS I	2	2	3	6	5	8	3	6
	Biology	12	12	16	17	23	18	-5	6
	Chemistry	4	6	5	7	11	10	-1	6
	Physics	5	5	7	7	9	19	10	14
	Earth Sci.	17	32	46	42	53	78	25	61
History	Grade 8	10	10	13	17	21	28	7	18
	World History	10	7	11	13	17	19	2	9
	US History	16	15	17	25	23	28	5	12



**Attachment D**

**LAUSD California Standards Test by Local District  
Percentage of Students Scoring Proficient/Advanced, 2006-2011**

Local District 8								Change in Percentage	
Subject	CST	2006	2007	2008	2009	2010	2011	'10-'11	'06-'11
English/Language Arts	Grade 2	42	46	43	49	49	53	4	11
	Grade 3	28	29	30	33	34	41	7	13
	Grade 4	40	42	46	51	56	59	3	19
	Grade 5	33	34	38	43	49	51	2	18
	Grade 6	25	25	32	36	40	41	1	16
	Grade 7	27	31	35	39	40	44	4	17
	Grade 8	25	24	31	32	38	42	4	17
	Grade 9	23	29	31	31	35	36	1	13
	Grade 10	21	23	27	31	33	38	5	17
	Grade 11	21	25	27	29	33	37	4	16
Mathematics	Grade 2	54	54	52	56	51	59	8	5
	Grade 3	53	54	57	56	58	66	8	13
	Grade 4	49	51	57	60	63	69	6	20
	Grade 5	39	41	46	52	54	60	6	21
	Grade 6	24	24	29	32	38	40	2	16
	Grade 7	23	23	29	29	34	36	2	13
	General Math	11	6	9	13	19	17	-2	6
	Algebra 1	11	11	14	15	19	20	1	9
	Geometry	8	8	9	9	10	15	5	7
	Algebra 2	9	8	11	12	12	12	0	3
	HS Summative	25	21	23	15	27	25	-2	0
Science	Grade 5	22	28	38	40	47	50	3	28
	Grade 8	24	30	42	39	45	49	4	25
	Grade 10	16	20	23	27	30	35	5	19
	ICS I	4	4	6	7	11	13	2	9
	Biology	15	19	22	20	26	29	3	14
	Chemistry	4	10	9	8	11	10	-1	6
	Physics	19	18	30	24	34	33	-1	14
	Earth Sci.	16	12	25	23	15	17	2	1
History	Grade 8	18	19	24	29	35	42	7	24
	World History	15	13	15	20	23	27	4	12
	US History	19	20	23	28	31	35	4	16