

INTER-OFFICE CORRESPONDENCE  
Los Angeles Unified School District



INFORMATIVE  
August 16, 2012

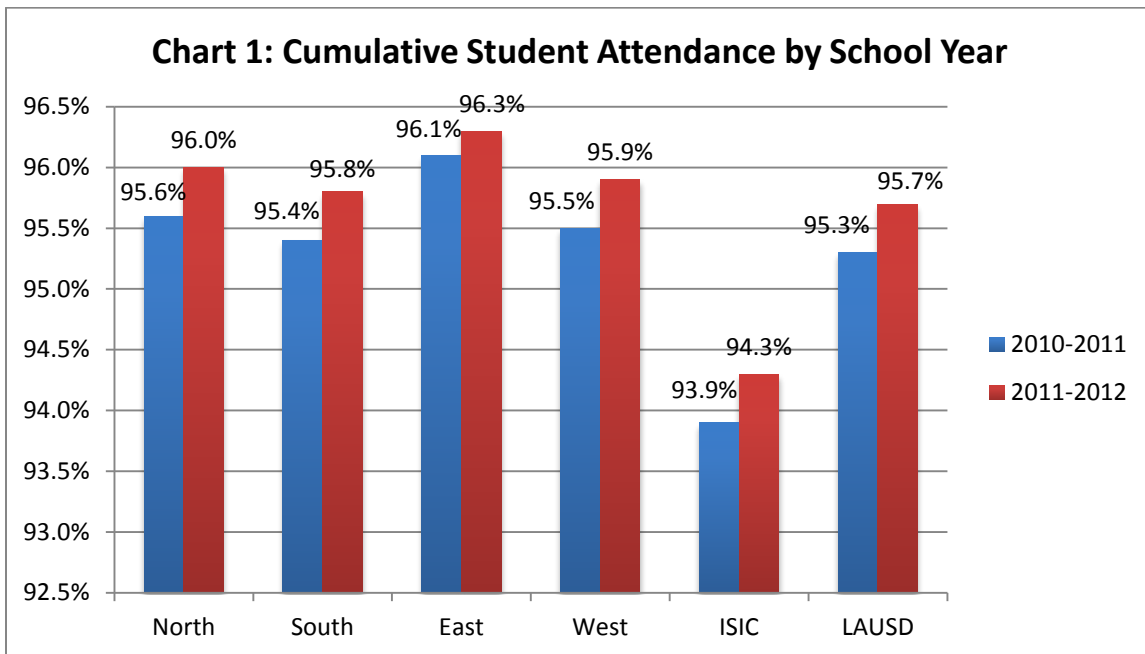
TO: Members, Board of Education  
John E. Deasy, Superintendent

FROM: Cynthia Lim, Executive Director  
Office of Data and Accountability

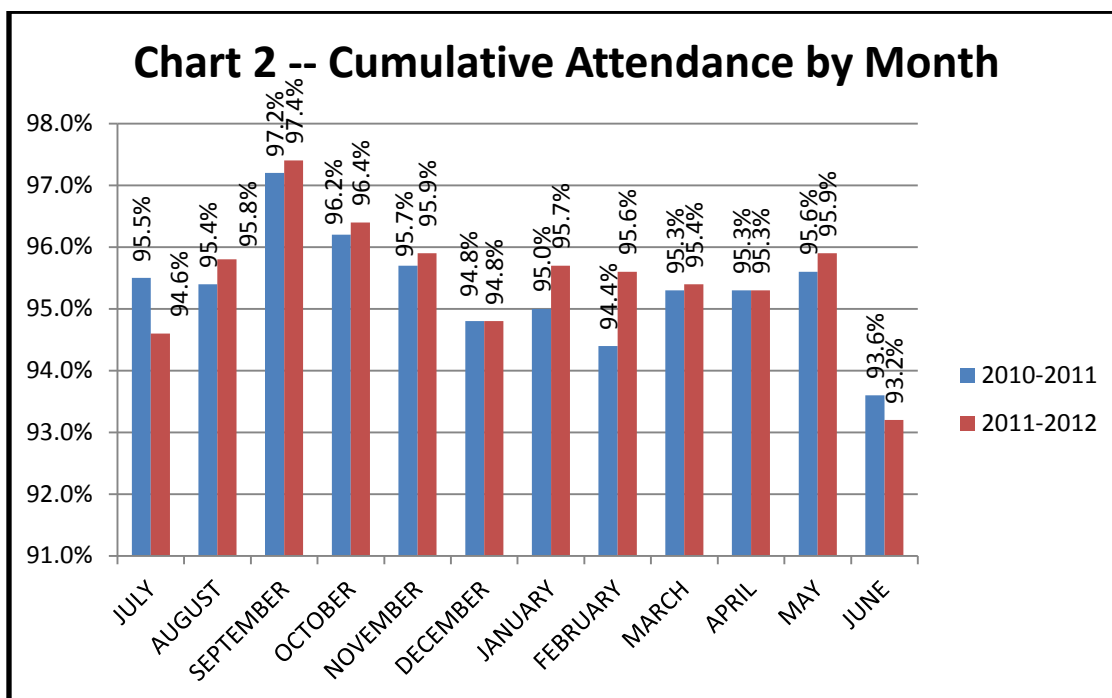
SUBJECT: 2011-12 Attendance Rates

This informative provides updates on student and school-based staff attendance for the 2011-12 school year. One of the goals of the District is 100% attendance by students and staff. Attendance rates for students are calculated by dividing the number of days attended by the number of days enrolled. Staff attendance is calculated by dividing the number of hours worked by the number of “workable” hours which subtracts out protected absence hours and vacation hours used.

Cumulative attendance rates for students increased from 95.3% to 95.7%. This increase was apparent across all regions in the District, as shown in Chart 1 by ESC.



Student attendance rates increased for each school month in 2011-12, with the exception of July and June.



While attendance rates show the average days attendance for a school or groups of students, the distribution of attendance rates show how many students are attending 96% or more of the time, or are attending less than 87% of the time. Students in transitional kindergarten, ungraded special education, grades 9, 10 and 12 had the highest percentage of “chronic absence,” i.e., students who attended school less than 87%. This translates to being absent for 20 days or more in the school year.

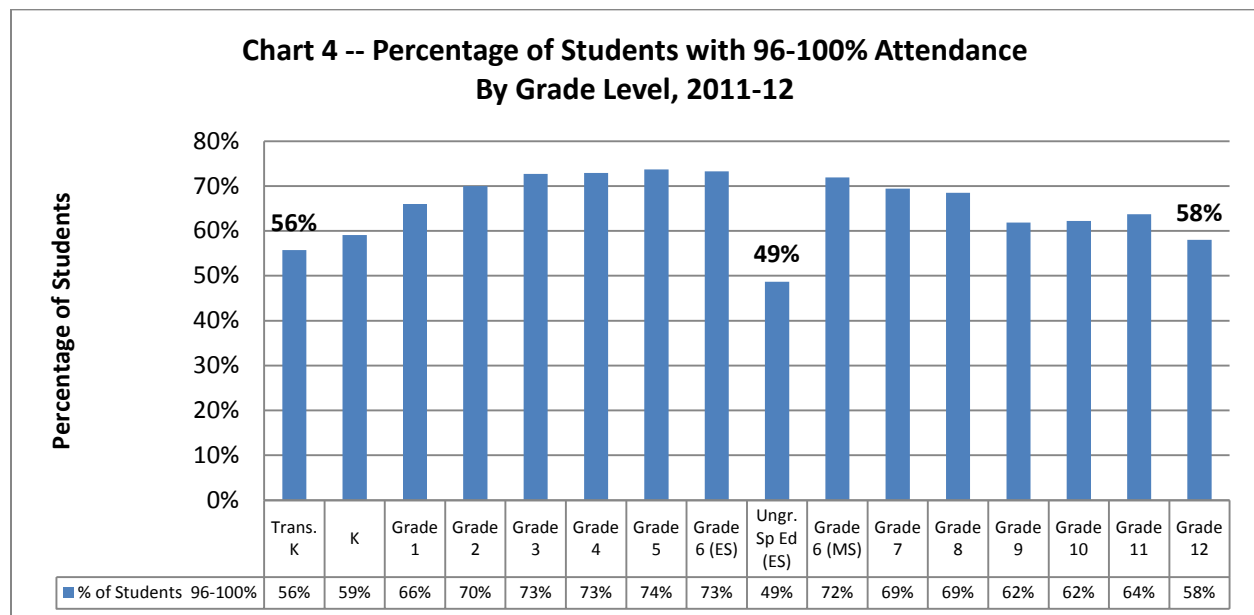
At the higher end of the scale, over 20% of the students in grades 5 and 6 had 100% attendance.

**Table 3 – Distribution of Attendance Rates by Grade Level**

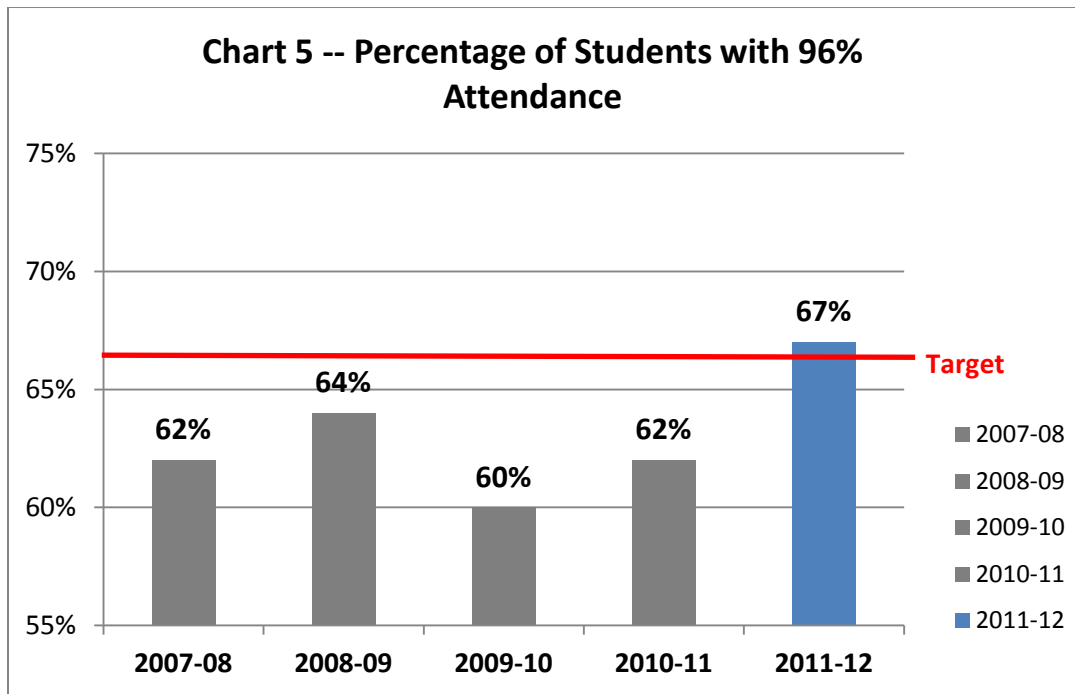
Grade	Attendance Rates				
	LESS THAN 87%	87 - 91%	92 - 95%	96 - 99%	100%
TRANSITION KINDER	8.6%	9.3%	26.1%	47.8%	7.8%
KINDERGARTEN	5.8%	9.4%	24.3%	48.2%	10.9%
GRADE 1	3.7%	7.1%	22.1%	52.0%	14.0%
GRADE 2	2.9%	5.7%	20.3%	53.6%	16.4%
GRADE 3	2.4%	5.2%	19.0%	54.3%	18.3%
GRADE 4	2.3%	5.2%	18.7%	54.1%	18.7%
GRADE 5	2.1%	4.8%	18.2%	53.5%	20.3%
GRADE 6	2.3%	5.1%	16.5%	52.6%	20.8%
UNGRADED SPECIAL ED	11.6%	12.7%	26.9%	42.0%	6.7%
GRADE 6	3.5%	5.7%	18.9%	54.1%	17.8%
GRADE 7	4.6%	6.0%	18.4%	52.1%	17.3%

Grade	Attendance Rates				
	LESS THAN 87%	87 - 91%	92 - 95%	96 - 99%	100%
GRADE 8	5.4%	6.3%	18.4%	53.3%	15.3%
GRADE 9	11.1%	8.0%	17.9%	48.4%	13.5%
GRADE 10	9.4%	8.1%	19.3%	49.9%	12.2%
GRADE 11	7.8%	7.8%	19.9%	51.4%	12.3%
GRADE 12	9.2%	9.0%	23.6%	50.2%	7.8%

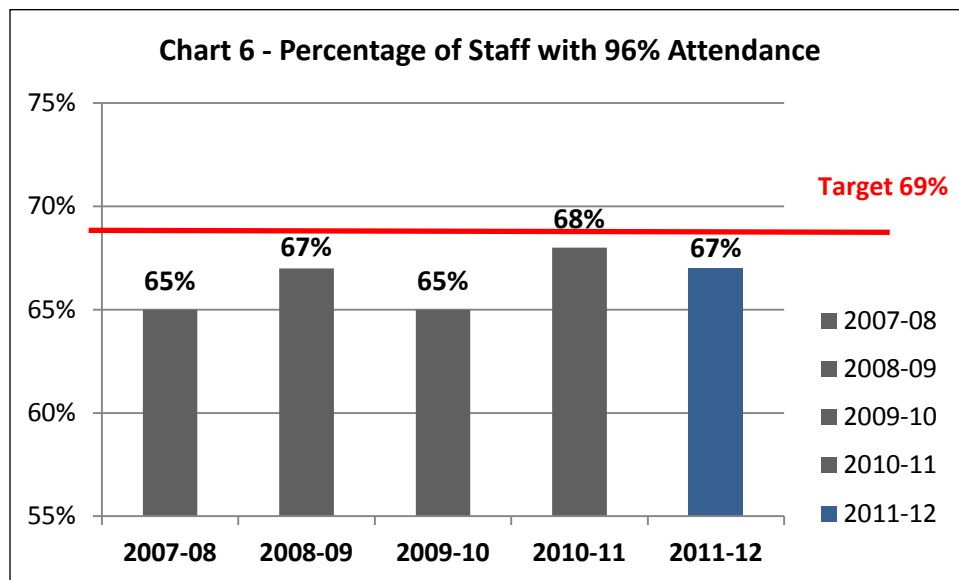
Elementary grades 3, 4, 5 and 6 had the highest percentage of students attending with 96-100% attendance, compared to all other grade levels, meaning students were absent 7 days or less during the school year. The grade levels with the lowest percentages of students with 96-100% attendance were transitional kindergarten, kindergarten, ungraded special education students and 12<sup>th</sup> grade students.



On the District's Performance Meter, the goal for the 2011-12 school year was to have 66% of students attending school 96-100% of the time. LAUSD exceeded this goal with 67% of students attending school 96-100% of the time.



The goal for staff attendance on the Performance Meter was 69% of school-based staff attending 96-100% of the time. In the 2011-12 school year, the attendance for school-based staff was 67%, short of the goal of 69%.



Attendance rates for students and school-based staff were monitored throughout the school year by local district personnel and school principals. The percentages of students attending 96-100% of the time and attendance submittal rates by school were also monitored. Attachment A provides a list of schools with the percentage of students attending 96-100%, attendance submittal rates and staff attendance through June 2012.

If there are further questions, please contact me at (213) 241-2460.

c: Jaime Aquino  
Michelle King  
Matt Hill  
Donna Muncey  
Lydia Ramos  
Steve Zipperman  
Tom Waldman  
David Holmquist  
Mark Hovatter