



INTER-OFFICE CORRESPONDENCE
Los Angeles Unified School District
Office of Data and Accountability

INFORMATIVE

May 19, 2016

TO: Members, Board of Education
Michelle King, Superintendent

FROM: Cynthia Lim, Executive Director

SUBJECT: COLLEGE ENROLLMENT RATES FOR LAUSD STUDENTS

This informative provides data on the percentage of LAUSD students who enrolled in post-secondary education in their first year after high school. Through a grant to our partners at the Los Angeles Education Research Institute (LAERI) and UCLA from the College Futures Foundation, the District has contracted with the National Student Clearinghouse to track college enrollment in California and throughout the United States. UCLA/LAERI will be providing in-depth analyses about college enrollment and persistence in a subset of schools in early summer and for all schools districtwide in early fall.

What is the National Student Clearinghouse?

The National Student Clearinghouse Research Center (NSC) is a non-profit organization that conducts and supports objective research related to educational enrollment, progression and completion. NSC obtains student data directly from registrars, the college and university officers responsible for keeping track of enrollments and degrees. Postsecondary institutions participate with the Clearinghouse voluntarily and typically send to NSC their complete student enrollment list on a monthly basis. Currently, 96% of all public post-secondary institutions and 73% of all private, non-profit four-year institutions participate in NSC.

NSC data include all students who are enrolled in credit-bearing courses at participating institutions. These include:

- Students who are enrolled full-time and part-time
- Students who attend on campus and on-line.
- Students who are concurrently enrolled in more than one institution, and students who are dual-enrolled in college courses while still in high school.
- Undergraduate and graduate students
- Degree-seeking, certificate-seeking, and non-degree-seeking
- Students who are enrolled during all terms, including the summer, and those in campus-based study-abroad programs

How is College Enrollment Tracked?

School districts or schools provide data to NSC for matching, typically the student's name, date of birth and high school enrollment dates. The data are then matched to information from post-

secondary institutions by the NSC. The match rate is typically over 95% for high school request files.

In accordance with LAUSD policy on the privacy of student data, students and/or parents who indicated in writing that they did not want their information released to the National Student Clearinghouse were excluded from LAUSD’s submission to the NSC. Students who are attending colleges also have the opportunity to opt-out of having their records shared with the school district. About 5% of all college students exercise this right, which the college registrar records and sends to NSC along with their data.

The NSC provides two types of data reports to the district: aggregate reports and student level data. Aggregate reports include data for college students who opted out of having their records shared. In contrast, the student level files exclude these students to protect their privacy requests. The aggregate reports provide a more complete picture of college attendance and show higher college attendance rates than the student level data provided to the district.

This informative provides data obtained from the aggregate reports which, although more accurate, are limited in how the data can be disaggregated.

College Enrollment Rates in LAUSD

Data for completers (graduates and students with certificates of completion) for the Classes of 2010 through 2015 were submitted to the NSC, subtracting out the students/parents who opted out. Table 1 shows that 61% of students in the Class of 2015 enrolled in post-secondary education in the fall immediately after high school. When the timeline was expanded to any time during the first year after high school, the percentage of students that enrolled in college from the Class of 2014 was 65%.

Table 1. *College enrollment rates for LAUSD*

	Class Of 2010	Class Of 2011	Class Of 2012	Class Of 2013	Class Of 2014	Class Of 2015
# of Completers (Graduates and Cert. of Completions)	30,761	30,403	30,627	31,928	30,546	29,937
# of Opt-outs from LAUSD	1,058	420	311	416	547	2,508
# Records Submitted to NSC	29,703	29,983	30,316	31,512	29,999	27,429
Enrolled in College the Fall Immediately Following Graduation From High School						
# of Students Enrolled in College	17,503	17,570	17,731	19,212	18,325	16,786
% of Students Enrolled in College	59%	59%	58%	61%	61%	61%
Enrolled in College at Any Time During the First Year After High School						
# of Students Enrolled in College	19,068	18,962	19,247	20,530	19,575	
% of Students Enrolled in College	64%	63%	63%	65%	65%	

For the Class of 2015, 37% enrolled in two-year institutions in the fall immediately after high school graduation, a decrease from 2010 when 40% of students enrolled in two-year institutions.

The percentage of students attending four-year institutions was 24% for the Class of 2015. This percentage has increased from 19% for the Class of 2010.

When college enrollment was examined for the time period of any time during the first year after high school, the percentage enrolling in two-year institutions was higher. For the Class of 2010, 45% attended two-year institutions, compared to 42% for the Class of 2014.

The percentage of students enrolling in four-year institutions was 20% for the Class 2010 and 24% for the Class of 2014.

Table 2. College enrollment rates for LAUSD by 2- and 4-year institutions

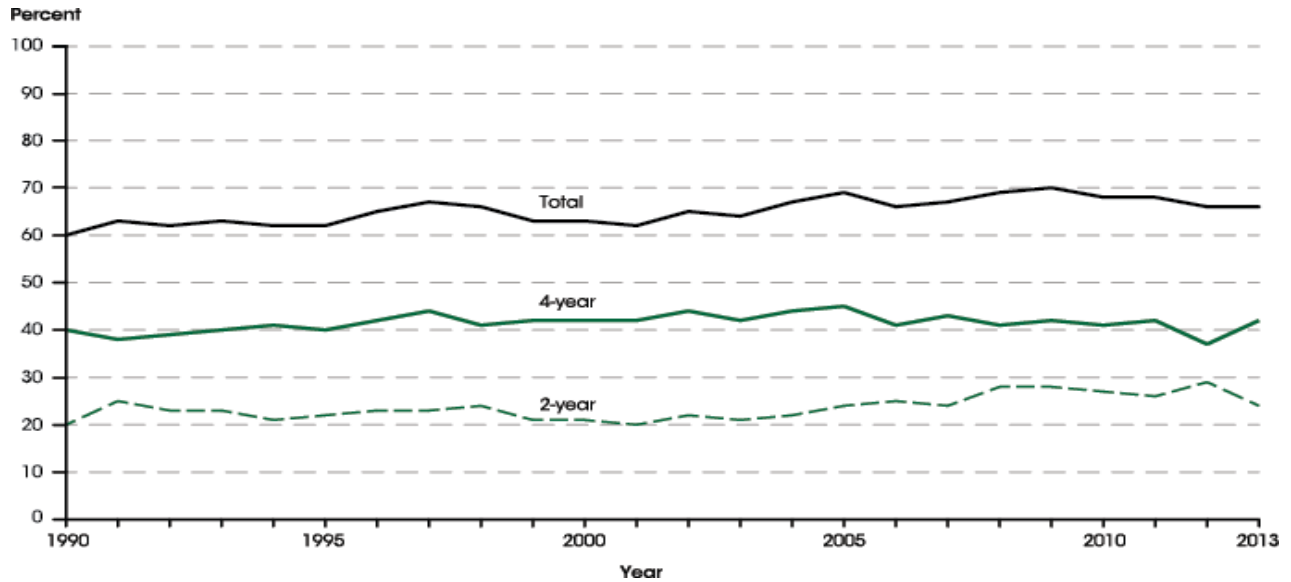
	Class Of 2010	Class Of 2011	Class Of 2012	Class Of 2013	Class Of 2014	Class Of 2015
# Records Submitted to NSC	29,703	29,983	30,316	31,512	29,999	27,429
Enrolled in College the Fall Immediately Following Graduation From High School						
# 4-Year	5,560	5,795	6,302	6,713	6,813	6,561
# 2-Year	11,943	11,775	11,429	12,499	11,512	10,225
% 4-Year	19%	19%	21%	21%	23%	24%
% 2-Year	40%	39%	38%	40%	38%	37%
Enrolled in College at Any Time During the First Year After High School						
# 4-Year	5,815	6,023	6,543	6,945	7,067	
# 2-Year	13,253	12,939	12,704	13,585	12,508	
% 4-Year	20%	20%	22%	22%	24%	
% 2-Year	45%	43%	42%	43%	42%	

The National Center for Education Statistics (NCES) tracks data on the percentage of students nationwide who enroll in 2 or 4 year institutions in October immediately following high school. Of the three million high school completers in the United States in 2013, 66% enrolled in college the following fall, compared to 61% in LAUSD. Nationwide, the immediate college enrollment rate increased from 60% in 1990 to 66% in 2013.

However, LAUSD has a lower percentage of students enrolling in four-year institutions compared to the national average. Nationwide, the percentage of students enrolling in four-year institutions has ranged between 38% and 42% since 1990. For the Class of 2013, 21% of LAUSD students enrolled in four-year institutions compared to 42% nationwide.

LAUSD also a higher percentage of students enrolled in two-year institutions compared to the national average. Since 1990, enrollment in two-year colleges ranged from 20% to 28% nationwide. For the Class of 2013, 40% of LAUSD students enrolled in two-year colleges, compared to 24% nationwide.

Figure 3. *Percentage of United States high school completers who were enrolled in 2- or 4-year colleges by the October immediately following high school completion, by level of institution: 1990–2013*



SOURCE: U.S. Department of Education, National Center for Education Statistics. (2015). *The Condition of Education 2015* (NCES 2015-144), Immediate College Enrollment Rate.

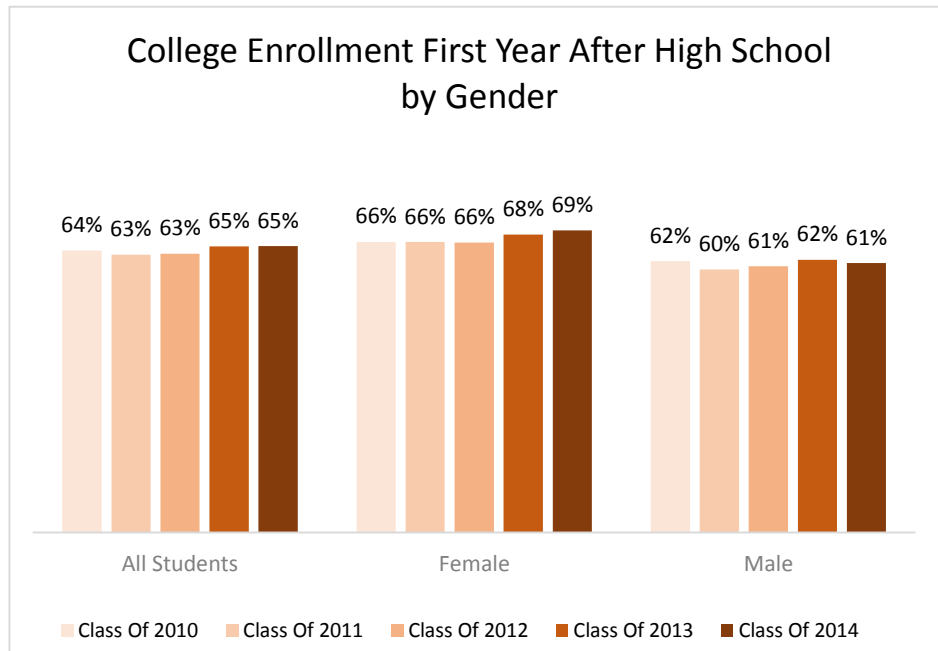
The majority of LAUSD students that enroll in college at any time during their first year after high school attend public institutions and remain in the state of California. Table 4 displays the number and percentage of students that attend college in public vs private institutions and in-state vs out-of-state. For students that enrolled in college any time during their first year after graduation, 59% to 61% enrolled in public institutions and 4 to 5% enrolled in private institutions. Over the last five years, 3% of students enrolled in colleges out-of-state and 60%-62% enrolled in state.

Table 4. *College enrollment rates for LAUSD students at any time during first year after high school by type and location*

	Class Of 2010	Class Of 2011	Class Of 2012	Class Of 2013	Class Of 2014
# Records Submitted to NSC	29,703	29,983	30,316	31,512	29,999
Public vs Private					
# Public Institution	17,746	17,517	17,981	19,171	18,333
# Private Institution	1,322	1,445	1,266	1,359	1,242
% Public Institution	60%	58%	59%	61%	61%
% Private Institution	4%	5%	4%	4%	4%
In State vs Out of State					
# In-State	18,199	18,005	18,259	19,469	18,548
# Out -of-State	869	957	988	1,061	1,027
% In-State	61%	60%	60%	62%	62%
% Out -of-State	3%	3%	3%	3%	3%

College enrollment rates were higher for females, compared to males. In the Class of 2014, 69% of females enrolled in college at any time during their first year after high school, compared to 61% for males. This pattern was observed over time as well, females had higher college attendance rates in the Classes of 2010 through 2013.

Figure 5.



When compared by ethnicity, college enrollment rates during the first year after high school were highest among White (77%) and Asian (74%) students for the Class of 2014. African-American students (66%) had higher enrollment rates than Latino students (63%). This trend was also observed over time.

Figure 6.

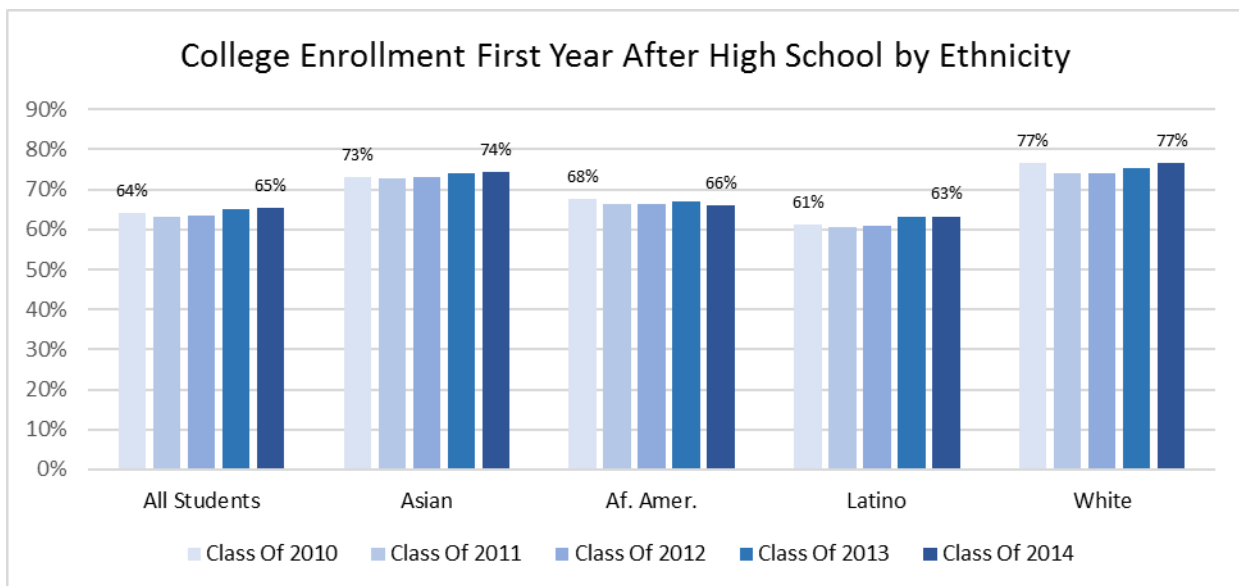


Table 7 provides the details on the number and percentages of students by ethnicity that were submitted to the NSC. The majority of records submitted were for Latino students (75%), reflective of the population of LAUSD.

Table 7. *Numbers and percentages of students enrolled in college at any time during first year out of high school by ethnicity*

		Class Of 2010	Class Of 2011	Class Of 2012	Class Of 2013	Class Of 2014
All Students	# Students with Records Submitted	29,703	29,983	30,316	31,512	29,999
	# of Students Enrolled in College	19,068	18,962	19,247	20,530	19,575
	% of Students Enrolled in College	64%	63%	63%	65%	65%
Asian	# Students with Records Submitted	2,277	2,412	2,555	2,524	2,372
	# of Students Enrolled in College	1,664	1,755	1,865	1,871	1,766
	% of Students Enrolled in College	73%	73%	73%	74%	74%
Af. Amer.	# Students with Records Submitted	3,343	3,201	3,097	3,004	2,678
	# of Students Enrolled in College	2,258	2,125	2,059	2,010	1,767
	% of Students Enrolled in College	68%	66%	66%	67%	66%
Latino	# Students with Records Submitted	21,202	21,549	22,044	23,382	22,656
	# of Students Enrolled in College	12,986	13,051	13,443	14,727	14,336
	% of Students Enrolled in College	61%	61%	61%	63%	63%
White	# Students with Records Submitted	2,537	2,441	2,279	2,327	2,046
	# of Students Enrolled in College	1,946	1,808	1,691	1,753	1,567
	% of Students Enrolled in College	77%	74%	74%	75%	77%

Further disaggregation of the summary data provided above is not possible because these data are based on the aggregate reports from NSC. Additional subgroup analyses and analysis of persistence rates and high school characteristics of students will be conducted by LAERI/UCLA using the student level data provided by the NSC. However, the student level analysis will yield lower college enrollment rates than the summary data provided in this informative due in part to the exclusion of privacy opt-outs at the district and college levels.

Attachment A lists college enrollment rates by school. Attachment B lists the institutions that LAUSD students enrolled in at any time following their first year after graduation.

If there are additional questions, feel free to contact me at (213) 241-2460.