

Los Angeles Unified School District

Office of Environmental Health and Safety

ALBERTO M. CARVALHO
Superintendent of Schools

NOTICE OF EXEMPTION

CARLOS A. TORRES
Director, Environmental Health and Safety

JENNIFER FLORES
Deputy Director, Environmental Health and Safety

THIS NOTICE WAS POSTED

ON May 12 2025

UNTIL June 11 2025

REGISTRAR – RECORDER/COUNTY CLERK

2025 096183



FILED
May 12 2025

Dean C. Logan, Registrar – Recorder/County Clerk

Electronically signed by BYRON PATTON JR

To: County Clerk and Registrar-Recorder
County of Los Angeles
12400 Imperial Highway
Norwalk, CA 90650

From: LAUSD OEHS
333 S. Beaudry Avenue
21st Floor
Los Angeles, CA 90017

Project Title:

Locke College Preparatory Academy - Field Upgrades with Natural Turf & Synthetic Track

Project Location – Specific:

The Alain LeRoy Locke College Preparatory Academy - Field Upgrades with Natural Turf & Synthetic Track (Project) will be located on the approximately 25.3-acre Locke High School (Campus) located at 325 East 111th Street in the Green Meadows neighborhood of the City of Los Angeles. It is bound by East 109th Street to the north, Avalon Boulevard to the east, East 111th Street to the south, and San Pedro Street to the west. The Project will occur on the existing athletic field of the Campus. The Campus is located in an urbanized community primarily consisting of residential and commercial uses.

Project Location – City:

Los Angeles

Project Location – County:

Los Angeles

Description of Nature, Purpose, and Beneficiaries of Project:

The Project will renovate the existing track and field with a new synthetic track, new field event facilities (long jump, triple jump, high jump, pole vault and shotput), natural grass football/soccer field with new goals and posts, new scoreboard, new irrigation and drainage, and provide accessibility upgrades to the path of travel, the restrooms, and the shower in the existing Physical Education Building (Exhibit A). The Board of Education approved the Project's budget of \$15,712,701 on November 14, 2023.

Minor work will include improvements to ensure compliance with local, state, and federal requirements including those of the American with Disabilities Act (ADA), Division of State Architect (DSA), and Department of Toxic Substances Control (DTSC).

The Project will be implemented pursuant to all applicable State, federal, and local regulations and all applicable Los Angeles Unified School District (LA Unified or District) specifications, standards, and/or guidelines, including those in compliance with the California Environmental Quality Act (CEQA) and the updated Standard Conditions of Approval for District Construction, Upgrade, and Improvements Projects (SC) as adopted by the

Los Angeles Unified School District

Office of Environmental Health and Safety

Board of Education on December 12, 2023.¹ LA Unified's SCs, design guidelines, and best management practices are designed to be incorporated into the Project design to avoid or limit potential adverse impacts associated with the District's projects.

The beneficiaries of the Project include Locke College Preparatory Academy students, faculty, staff, families, school supporters, and the community at large who may request access to the Campus pursuant to the Civic Center Act (CA Ed. Code Sections 38130 - 38139). The upgraded athletic facilities, once completed, will provide modern high-performance athletic facilities that support physical educational programs, student athletic achievement, and allow the school to host athletic events and other school community events.

Name of Public Agency Approving the Project:

Los Angeles Unified School District

Name of Person or Agency Carrying Out Project:

Los Angeles Unified School District

Exempt Status: (check one below)

- ☐ Ministerial [Public Resources Code (PRC) Section 21080(b)(1); CEQA Guidelines Section 15268²]:
- ☐ Declared Emergency [PRC Section 21080(b)(3); CEQA Guidelines Section 15269(a)]:
- ☐ Emergency Project [PRC Section 21080(b)(4); CEQA Guidelines Section 15269(b)(c)]:
- ☒ Categorical Exemption (PRC Section 21084; CEQA Guidelines Sections 15300 -15333):
- *CEQA Guidelines Section 15301 – Existing Facilities*
 - *CEQA Guidelines Section 15302 – Replacement or Reconstruction*
 - *CEQA Guidelines Section 15303 – New Construction Minor Alterations*
 - *CEQA Guidelines Section 15311 – Accessory Structures*
 -
- ☐ Statutory Exemption:

Reasons why project is exempt:Section 15301 – Existing Facilities

Class 1 consists of the operation, repair, maintenance, permitting, leasing, licensing, or minor alteration of existing public or private structures, facilities, mechanical equipment, or topographical features involving negligible or no expansion of use beyond that existing at the time of the lead agency's determination.

The Project will renovate the existing track and field with a new synthetic track, new field event facilities (long jump, triple jump, high jump, pole vault and shotput), natural grass football/soccer field with new goals and posts, new scoreboard, new irrigation and drainage, and provide accessibility upgrades to the path of travel, the restrooms and the shower in the existing Physical Education Building. The Project will not generate growth or require the addition or construction of new or expanded facilities. Therefore, the Project fulfills the requirements of CEQA Guidelines Section 15301.



FILED
May 12 2025

Dean C. Logan, Registrar – Recorder/County Clerk

Electronically signed by BYRON PATTON JR

¹ LAUSD OEHS, "Standard Conditions of Approval for District Construction, Upgrade, and Improvement Projects (SCs)" https://www.lausd.org/cms/lib/CA01000043/Centricity/domain/135/ceqa/2023_Standard_Conditions_UPDATE_Final.pdf

² CEQA Guidelines can be found at California Code of Regulations Title 14, Chapter 3, Section 15000 - Section 15387.

Los Angeles Unified School District

Office of Environmental Health and Safety

2025 096183



FILED
May 12 2025

Dean C. Logan, Registrar – Recorder/County Clerk

Electronically signed by BYRON PATTON JR

Section 15302 – Replacement or Reconstruction

Class 2 consists of replacing or reconstructing existing structures and facilities where the new structure will be located on the same site as the structure replaced and will have substantially the same purpose and capacity as the structure replaced.

The Project will renovate the existing track and field with a new synthetic track, new field event facilities (long jump, triple jump, high jump, pole vault and shotput), natural grass football/soccer field with new goals and posts, new scoreboard, new irrigation and drainage, and provide accessibility upgrades to the path of travel, the restrooms and the shower in the existing Physical Education Building. The Project will not result in an increase or alteration of the current use, function, or capacity of the existing Campus. Therefore, the Project fulfills the requirements of CEQA Guidelines Section 15302.

Section 15303 – New Construction or Conversion of Small Structures

Class 3 consists of construction and location of limited numbers of new, small facilities or structures; installation of small new equipment and facilities in small structures; and the conversion of existing small structures from one use to another where only minor modifications are made to the structure.

The Project will renovate the existing track and field with a new synthetic track, new field event facilities (long jump, triple jump, high jump, pole vault and shotput), natural grass football/soccer field with new goals and posts, new scoreboard, new irrigation and drainage, and provide accessibility upgrades to the path of travel, the restrooms and the shower in the existing Physical Education Building. The Project will also include accessibility improvements to paths of travel and restroom facilities that qualify as small facilities or structures. Therefore, the Project fulfills the requirements of CEQA Guidelines Section 15303.

Section 15311 – Accessory Structures

Class 11 consists of construction or replacement of minor structures accessory to (appurtenant to) existing commercial, industrial, or institutional facilities, including, but not limited to, on-premise signs and small parking lots.

The Project will renovate the existing track and field with a new synthetic track, new field event facilities (long jump, triple jump, high jump, pole vault and shotput), natural grass football/soccer field with new goals and posts, new scoreboard, new irrigation and drainage, and provide accessibility upgrades to the path of travel, the restrooms and the shower in the existing Physical Education Building. These structures are minor accessories to the existing Campus. Therefore, the Project fulfills the requirements of CEQA Guidelines Section 15311.

Section 15300.2 – Exceptions

Section 15300.2 of the CEQA Guidelines, Exceptions, provides conditions under which categorical exemptions are inapplicable. Review of the Project indicates that it will not violate any of the exceptions, as described in the following section.

1. *The project will occur in certain specified sensitive environments or locations;*

The Project site is a fully developed Campus within a heavily urbanized area of southeast Los Angeles and is surrounded by predominantly residential and industrial uses. The site is not designated as a biologically sensitive location. The nearest significant ecological area (SEA) is the

Los Angeles Unified School District

Office of Environmental Health and Safety

Harbor Lake Regional Park SEA in Los Angeles located approximately 9.3 miles south of the Project site.³ The nearest sensitive environment to the Project site is the Western Snowy Plover habitat at Dockweiler State Beach in Los Angeles located approximately 9.1 miles west of the Project site.⁴ As such, the Project will not impact sensitive environments or locations.

2. *Cumulative impacts will be considerable because successive projects of the same type would occur at the same place over time;*

The Campus is an active school site and there will likely be ongoing maintenance activities and minor projects on the Campus to keep the school operational. There are currently no known successive projects of the same type or scale planned for the Campus. As the Project would not result in any lasting impacts once construction of the Project is complete, the Project would not contribute to cumulative impacts when considered with expected successive projects. Therefore, no cumulative impacts will result from the Project and successive projects of the same type and at the same place over time.

3. *There is a reasonable possibility that the activity will have a significant effect on the environment due to unusual circumstances;*

There are no known unusual circumstances that would have a significant effect on the environment. The Project includes the removal of one dead tree. District policy requires consultation with an arborist to determine if the trees are a protected native species. All tree trimming and removal conducted on District property is required to adhere to the procedures described in the LAUSD OEHS Tree Trimming and Removal Procedure.⁵ Additionally, written approval from the school principal will be required before any trees can be removed. If tree removal is scheduled to occur between February 1 and August 31, a nesting bird survey would be performed prior to removal activities, per SC-BIO-3.

The Project will include ground-disturbing activities. These activities are not considered unusual circumstances for the classes of projects under which an exemption is claimed. Nevertheless, consideration must be given to the management of pavement removal and excavated soil associated with earthwork activities for the Project. Since the Project involves the removal of pavement, natural turf and other soil disturbing activities, soil sampling and testing for characterization is required prior to these activities. If construction or earthmoving activities require import or export of soils and materials, OEHS must be notified to provide oversight to ensure that these activities are conducted in compliance with the requirements of District Specification 01 4524, relevant provisions of South Coast Air Quality Management District Rule 1466, and other applicable environmental agency rules and requirements.⁶ Furthermore, as set forth in SC-CUL-6, SC-CUL-7, SC-CUL-10, and SC-CUL-11, construction activities must be stopped immediately and OEHS notified upon discovery of subsurface features, such as buried resources (i.e., paleontological

³ Los Angeles County Department of Regional Planning, http://gis.planning.lacounty.gov/GIS-NET3_Public/Viewer.html, accessed April 2025.

⁴ United States Fish and Wildlife Service Critical Habitat Portal, <https://ecos.fws.gov/ecp/report/table/critical-habitat.html> accessed April 2025.

⁵ LAUSD OEHS, "Tree Trimming and Removal Procedure," <https://www.lausd.org/ceqa>

⁶ LAUSD OEHS, "Section 01 4524 Environmental Import/Export Materials Testing", http://www.laschools.org/documents/file?file_id=219798234&show_all_versions_p=t

2025 096183



FILED

May 12 2025

Dean C. Logan, Registrar - Recorder/County Clerk

Electronically signed by BYRON PATTON JR

Los Angeles Unified School District

Office of Environmental Health and Safety

resources, archaeological resources), tanks or seepage pits, or stained/odoriferous soils. Lastly, any construction and demolition waste shall be recycled to the maximum extent feasible per SC-USS-1. Therefore, the Project will not have a significant effect on the environment due to unusual circumstances.

4. *The project may result in damage to scenic resources, including but not limited to trees, historic buildings, rock outcroppings, or similar resources within a highway officially designated as a state scenic highway;*

The closest designated state scenic highway to the Project site is the Topanga Canyon State Scenic Highway, a 2.5-mile portion of State Route 27 (SR-27), which is located approximately 19.5 miles north of the Campus in the Santa Monica Mountains.⁷ The Project will not result in the removal of historic buildings, rock outcroppings, or other scenic resources. Therefore, the Project will not result in damage to scenic resources or similar resources within a highway officially designated as a state scenic highway.

5. *The project is located on a site which is included on any list compiled pursuant to Section 65962.5 of the Government Code; or*

The Project site is not located on any sites that are included on any list compiled pursuant to Government Code Section 65962.5.⁸ Therefore, the Project will have no impacts related to being located on a hazardous waste site.

6. *The project may cause a substantial adverse change in the significance of a historic resource.*

The Campus opened in 1967 and was determined to be ineligible as an historic resource by LA Unified's Historic Preservation Specialist and Coordinator. Therefore, the project will not cause substantial adverse changes in the significance of a historic resource.


Prepared By:

Bryan Ramos Fernandez, AICP
CEQA Project Manager/Contract Professional

Phone and Email:

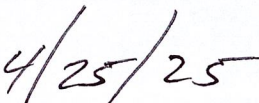
(213) 241-4210
cp-bryan.fernandez@LAUSD.net

Signed by:



Carlos A. Torres,
CEQA Officer of the Los Angeles Unified School District

Date:



2025 096183



FILED

May 12 2025

Dean C. Logan, Registrar - Recorder/County Clerk

Electronically signed by BYRON PATTON JR

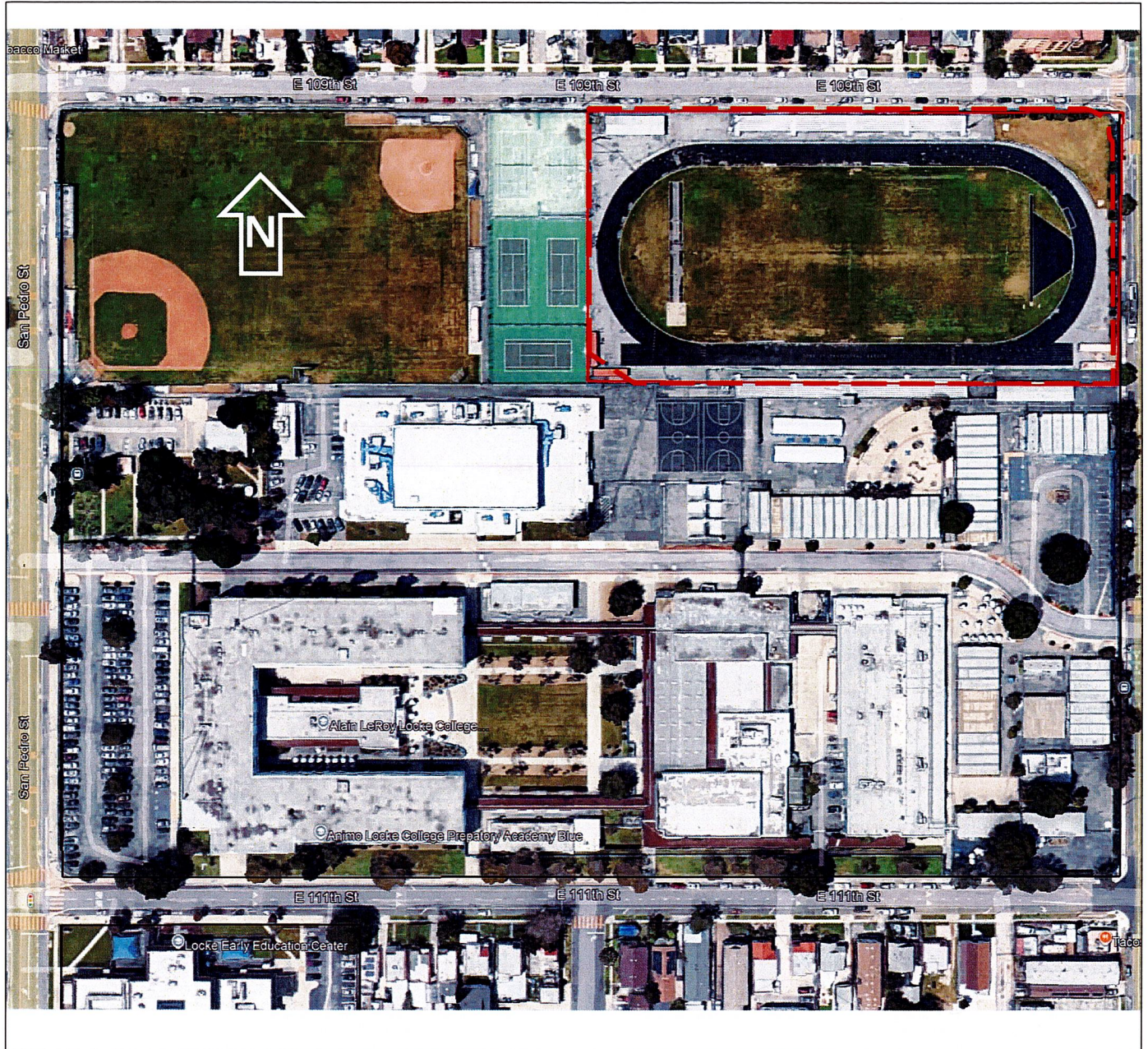
⁷ Los Angeles County Department of Regional Planning, http://gis.planning.lacounty.gov/GIS-NET3_Public/Viewer.html, accessed April 2025.

⁸ California Department of Toxic Substances, http://www.dtsc.ca.gov/SiteCleanup/Cortese_List.cfm, accessed April 2025.

Los Angeles Unified School District

Office of Environmental Health and Safety

EXHIBIT A – CAMPUS SITE PLAN (not to scale)



2025 096183



FILED

May 12 2025

Dean C. Logan, Registrar – Recorder/County Clerk

Electronically signed by BYRON PATTON JR

PROJECT SITE