

# HOMELESS EDUCATION OFFICE



## Executive Summary

### Purpose

The Homeless Education Office (HEO) was designed to provide assistance to homeless students and families in compliance with the McKinney Vento Homeless Assistance Act, an integral part of the Every Student Succeeds Act. The HEO personnel work in collaboration with school personnel and community service agencies in an effort to maximize access to various educational, social and enrichment programs which promote academic success and student achievement.

### Background

The Los Angeles Unified School District (LAUSD) is the second largest public school district in the country, with thousands of our students experiencing homelessness. Research has shown that these students are more likely to score lower on standardized tests, repeat a grade and/or drop out of school than their housed peers. Many students experiencing homelessness are at risk of exposure to violence, trauma, family mental health concerns, substance abuse and school instability. As a result, these students often present with social, behavioral and academic challenges related to their circumstance.

The Access for All resolution was passed in 2006 by the Board of Education, establishing the current Homeless Education Office. The resolution was adopted to ensure compliance with the McKinney- Vento Homelessness Assistance Act and the Every Student Succeeds Act (ESSA), which requires school districts remove barriers to school enrollment, support regular attendance and improve student outcomes. Pupil Services and Attendance (PSA) Counselors were hired to provide services, supports and advocacy for LAUSD students experiencing homelessness. Additionally, PSA Counselors assist with identifying students experiencing homelessness, as well as the provision of training and technical assistance to school site personnel and community partners.

### Objectives

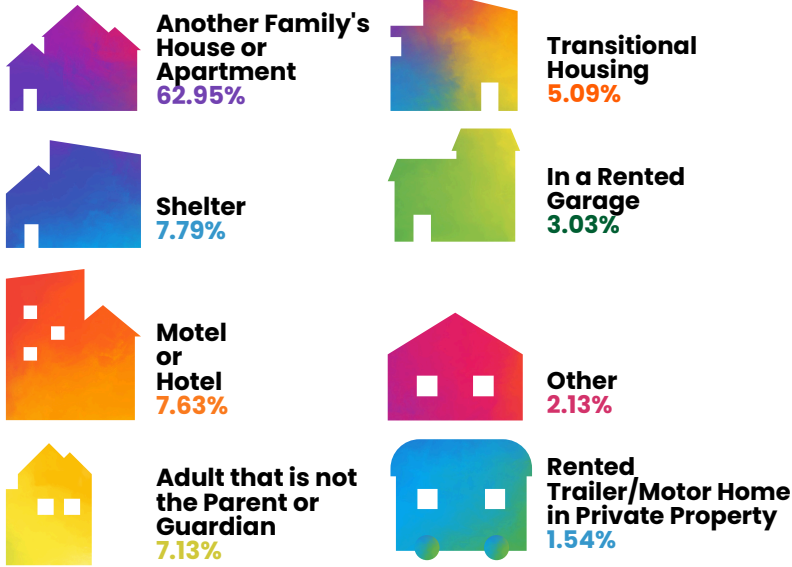
- Ensure that schools are implementing District policy and federal mandates that permit students experiencing homelessness to exercise their educational rights
- Remove barriers to academic success for students experiencing homelessness, providing equal access to education as that of their housed peers
- Effectively serve students experiencing homelessness by advocating for access to educational resources creating equity that fosters a sense of empowerment and stability
- Leverage program resources by collaborating with internal and external partners to secure essential items for students

[WWW.LAUSD.ORG/HEO](http://WWW.LAUSD.ORG/HEO)

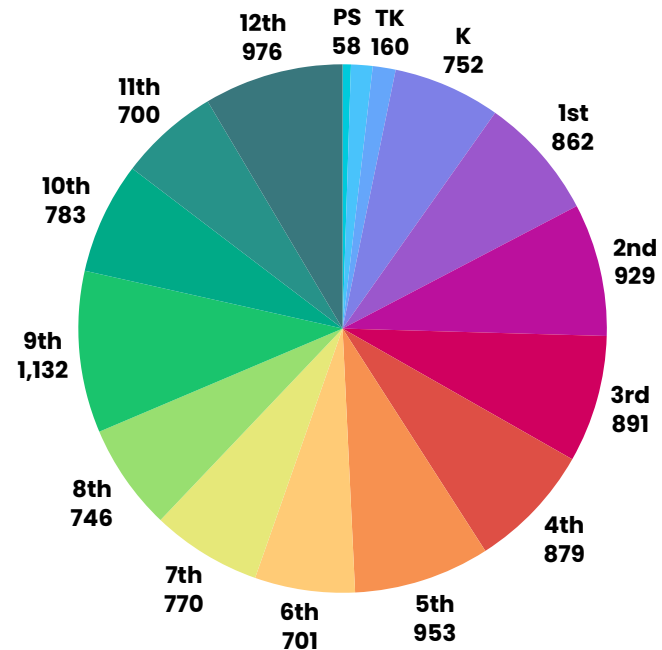
121 N. BEAUDRY AVE. LOS ANGELES, CA 90012

• (213) 202-7581

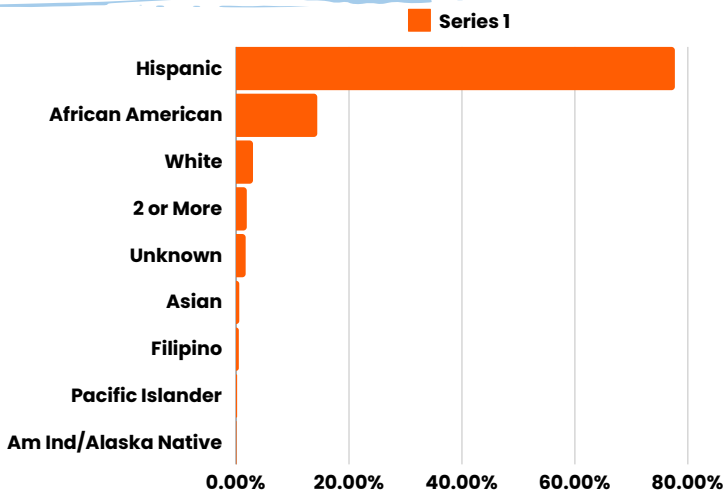
## By Nighttime Residence



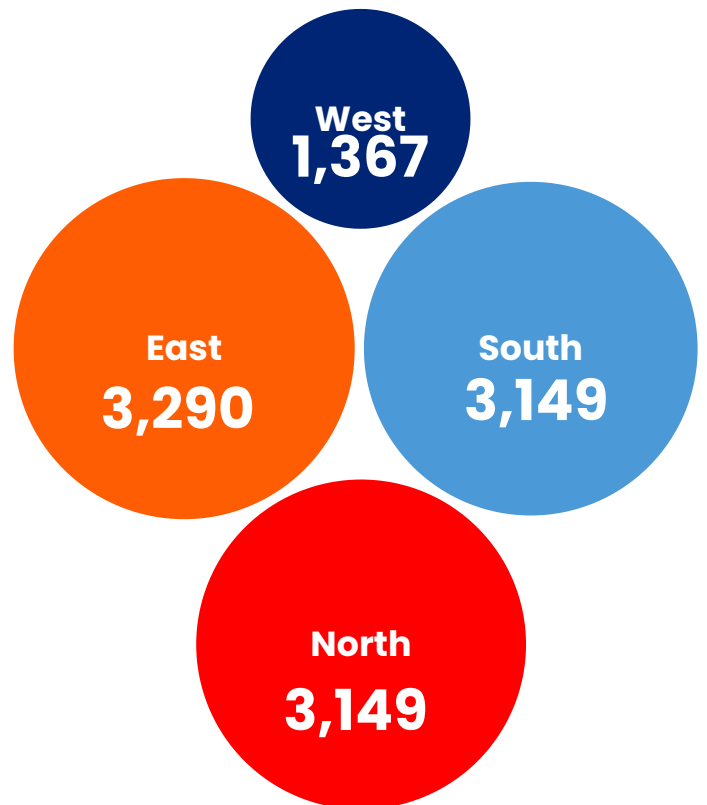
## By Grade Level



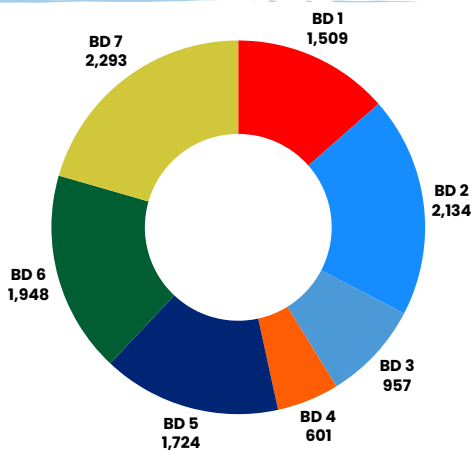
## By Ethnicity



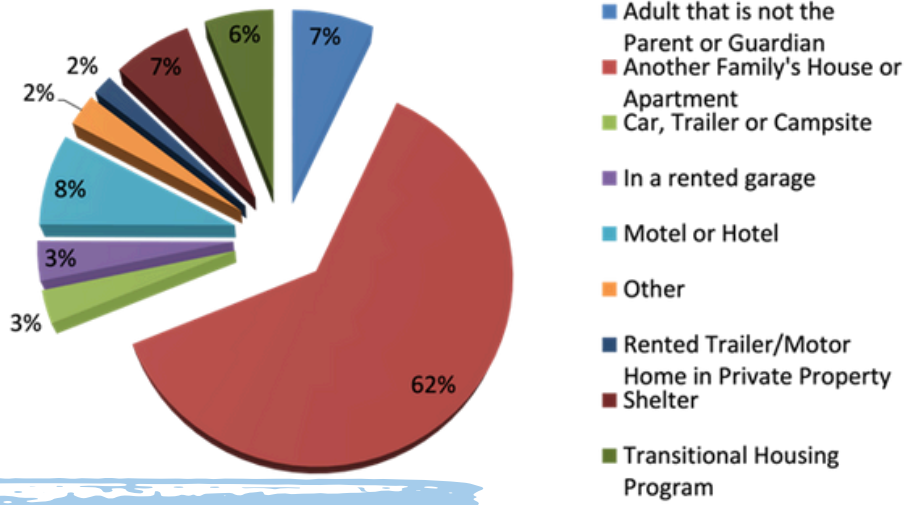
## By Region



## By Board District



## By Nighttime Residence

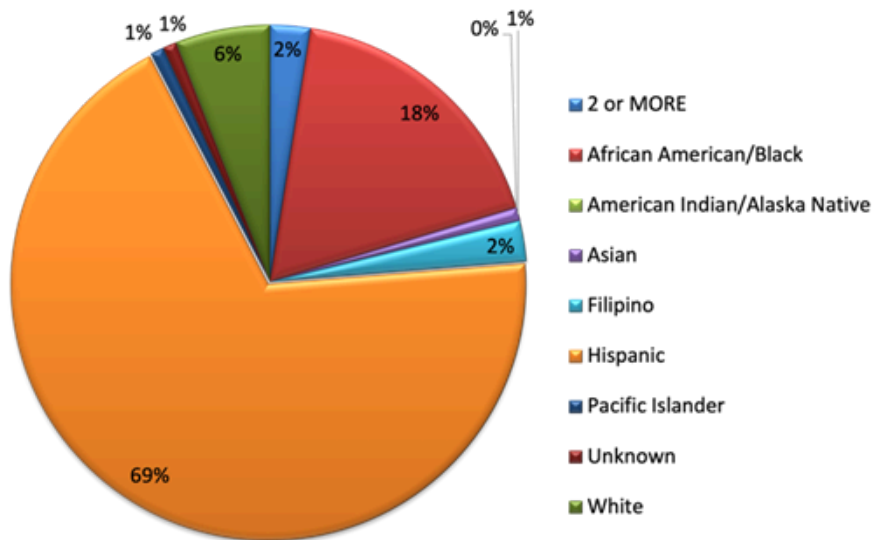


## 2021-2022 School Year

### LOCAL DISTRICT STUDENT COUNT

Central - 2,070
East- 1,274
North East- 1,367
North West - 1,237
South- 1,892
West- 1,198
XS- 592
<b>Total Student Count 9,630</b>

## By Ethnicity



### SCHOOL BOARD DISTRICT COUNT

BD 1- 1,138
BD 2- 2,153
BD 3- 796
BD 4- 497
BD 5- 1,467
BD 6- 1,636
BD 7- 1,943
<b>Total- 9,630</b>

## By Grade Level

