

## Pupil Services & Attendance (PSA) Counselors:

Serve as liaisons between the school and the home and the YSC, working on behalf of students whose home or community life presents barriers which impede educational success.

Conduct educational assessments with families and link families to appropriate support services within the district, the YouthSource Centers, and other community programs.

Work directly with students who experience difficulty in achieving their academic potential due to social/ emotional, home and community barriers.

Are experts in interpreting laws and bulletins related to education, enrollment, attendance policies, and pupil records.

Hold a master's degree in Social Work, School Counseling or Marriage and Family Counseling and hold Pupil Personnel Services Credentials specializing in Child Welfare and Attendance.

Collaborate with community partners to ensure students are linked to needed services and resources.

Develop and implement trainings for parents and staff.



## Los Angeles Unified School District

Elsy Rosado, Director | Pupil Services  
(213) 241-3844

### City Partnership-YouthSource Centers

#### Coordinator

Haide Arriaza, MSW, MEd | 213-725-5600 ext. 2080  
haide.arriaza@lausd.net

#### Lead Counselor

Teresa Gonzalez | 213-725-5600 ext. 1507  
tym5734@lausd.net

#### PSA Aide

Selegna Terrazas | 213-725-5600 ext. 4020  
selegna.terrazas@lausd.net

#### Local District Central

#### Coalition for Responsible Community Development

Brenda Carrillo | 213-725-5600 ext. 2540  
brenda.carrillo@lausd.net

#### Para Los Niños YouthSource Center

Reidiny Martinez | 213-725-5600 ext. 1576  
rxb94181@lausd.net

#### Archdiocesan Youth Employment Services

Lenin Diaz | 213-725-5600 ext. 2798  
lsd15451@lausd.net

#### Local District East

#### AYE-AJCC-East LA

Linda Garcia | 213-725-5600 ext. 2825  
lxg9290@lausd.net

#### AJCC, Slawson Occupation

Lorena Garcia | 213-725-5600 ext. 2285  
lxg5237@lausd.net (M)

#### AJCC, Huntington Park

Jose Ruelas | 213-725-5600 ext. 1956  
jlr2130@lausd.net

Lorena Garcia | 213-725-5600 ext. 2285  
lxg5237@lausd.net (T-F)

#### Boyle Heights Technology YouthSource Center

Sara Puma | 213-725-5600 ext. 1999 | 323-526-1232  
sxp9999@lausd.net

#### Para Los Niños East YouthSource Center

Griselda Hernandez | 213-725-5600 ext. 2476  
griselda.hernandez@lausd.net

#### Local District Northeast

#### El Proyecto del Barrio, Inc. San Fernando

Gabriela Morales | 213-725-5600 ext. 1998  
gxm9388@lausd.net

#### El Proyecto del Barrio, Inc. Sun Valley

Alan Woskanian | 213-725-5600 ext. 2030  
alan.woskanian@lausd.net

#### Goodwill Southern California

Pamela Gates | 213-725-5600 ext. 1568  
pgates@lausd.net

#### Local District South

#### Harbor YouthSource Center

Luis Meza | 213-725-5600 ext. 1816 | luis.a.meza@lausd.net  
Watts Labor Community Action Committee

Maribel Campbell | 213-725-5600 ext. 1647  
mxp6521@lausd.net

#### Los Angeles Youth Opportunity Movements: Watts

Erica Salcido | 213-725-5600 ext. 1662 | exs25031@lausd.net

#### Archdiocesan Youth Employment Services

Veronica Villanueva | 213-725-5600 ext. 1626  
vvill1@lausd.net

#### Local District West

#### Brotherhood Crusade

Tania Martinez | 213-725-5600 ext. 1610  
tania.martinez@lausd.net

#### Regents of University of California

Jordan Le Blanc | 213-725-5600 ext. 2040  
jordan.leblanc@lausd.net

## Los Angeles Unified School District STUDENT HEALTH AND HUMAN SERVICES Pupil Services



## CITY OF LOS ANGELES PARTNERSHIP YOUTHSOURCE SYSTEM



333 S. Beaudry Avenue - 29th Floor  
Los Angeles, CA 90017  
Phone: 213-241-3844  
Fax: 213-241-6858

<http://achieve.lausd.net/pupilservices>

## Services Offered by the PSA Counselor:

**Mission** To ensure that all LAUSD students are enrolled, attending, engaged, and on-track to graduate.

**Purpose** Pupil Services & Attendance (PSA) Counselors are child welfare and attendance advocates who utilize a three-tiered model (prevention, early intervention and intensive intervention) to improve individual and system-wide student attendance, engagement, achievement and graduation.

### Background

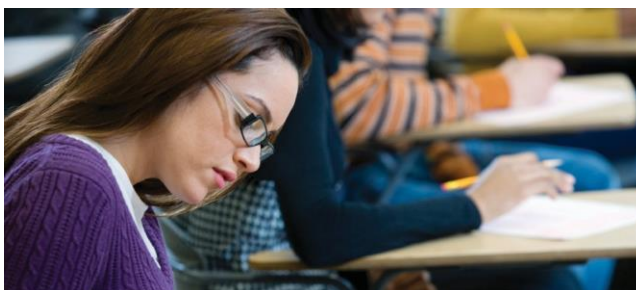
In an effort to address the dropout rate, the City of Los Angeles Economic and Workforce Development Department and the LAUSD Pupil Services Department collaborated to develop a comprehensive dropout recovery model. Since 2012, the City Partnership Program has supported our highest need communities with the highest dropout rate in an effort to re-engage our youth back into an educational setting. Pupil Services and Attendance Counselors have been co-located within City of Los Angeles YouthSource Centers and community based organizations in order to serve our students collaboratively. These re-engagement centers also serve as an integral component of the Truancy Diversion Program where students that have been found violating the Daytime Curfew Law are referred to receive services.

## City Partnership-YouthSource Centers

Full-time Pupil Services and Attendance (PSA) Counselors are co-located in 14 YouthSource Centers and 3 American Job Centers located throughout the city. The Centers service youth between the ages of 16-24 with a focus on re-engaging students to school and providing them with opportunities to develop work skills.

PSA Counselors work collaboratively with City YouthSource/AJCC Centers to conduct student intakes, assessments, and determine appropriate interventions to identified at-risk student with behavioral, social and attendance related issues.

The primary goal of the PSA Counselor is to provide students support and services to overcome barriers that impede school attendance and academic achievement. PSA Counselors make appropriate referrals to necessary services and monitor students progress.



### Who We Serve

#### Workforce Innovation and Opportunity Act (WIOA)

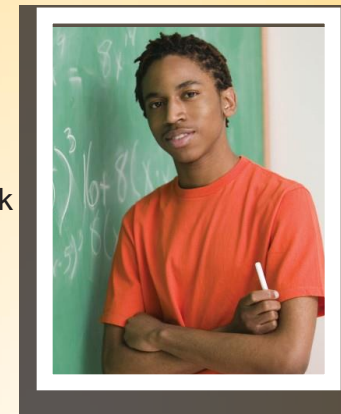
- 16-24 (WIOA)
- 14-24 (Summer Youth Employment Program)
- Must be able to show proof of right to work in the United States
- Must live in Los Angeles city boundaries
- Must be "low income"
- Must have a recognize "barrier" to employment

## Program Services

The City Partnership-YouthSource System Program provide educational services to students 17-24 served throughout the Los Angeles Unified School District.

PSA Counselors will:

- Outreach to schools, community agencies and identify students through potential dropout lists to link them to services at the YouthSource Center
- Conduct educational assessments for all students that walk in to the YouthSource Center in order to ensure that a comprehensive educational history is reviewed and a plan is identified to support each student.
- Re-engage students that have dropped out of high school by linkage to appropriate school placement and advocacy for school enrollment.
- Provide services and link students, who violate the daytime curfew law, referred through Los Angeles School Police Department Truancy Diversion Referral to YouthSource Programs and services (13-17 years old).



### Program Objectives

- Completed educational assessments to high risk and out of school youth to provide comprehensive services
- To re-engage out of school youth back into an educational setting in the educational process
- To support youth in obtaining their high school diploma or high school equivalency certificate
- To link them job readiness programs and training in order to support them in their transition into the workforce