

TK Progress Report Grading Support

ENGLISH-LANGUAGE DEVELOPMENT



TK ELD scoring aligns to the Preschool Learning Foundations (PLF) and its developmental levels, Beginning (B), Middle (M), and Later (L). The developmental progression described in ELD is related to the child's experiences with English and ELD instruction, not the child's age.

Chapter 2 of the Preschool Learning Foundations (PLF) vol. 1 contains the California ELD foundations for TK. Bulleted examples of what proficiency at each level looks like/sounds like are provided.

Master Plan Program – For TK students only

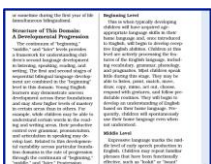
Your child is enrolled in the following English Learner Master Plan Program: <name of program here>

Overall CELDT Level:

California ELD Standards Part I	Reporting Period			California ELD Standards Part II	Reporting Period		
	1st	2nd	3rd		1st	2nd	3rd
ELD Part 1 Interacting in Meaningful Ways				ELD Part 2 Learning About How English Works			
Engages in dialogue with others				Uses age appropriate speech patterns			
Comprehends stories when read aloud				Expands and Enriches Ideas			
Retells stories orally				Connects ideas to previous experiences			

English Language Development Key

B = Beginning Beginning to develop English especially with signals and stimuli.	M = Middle Repeats familiar phrases and uses formulaic speech. Code switches. Comprehension is developing.	L = Later Beginning to use English to learn in all content areas. Use of age-appropriate English is improving.
---	--	--



For more information about the [ELD progression levels](#) see pages 107-108 of Chapter 2, vol. 1 of the PLF.



See the [ELD foundations](#) for bulleted examples of what student abilities look and sound like at the different levels.

For the [complete ELD Chapter](#) click on the ELD icon.

