

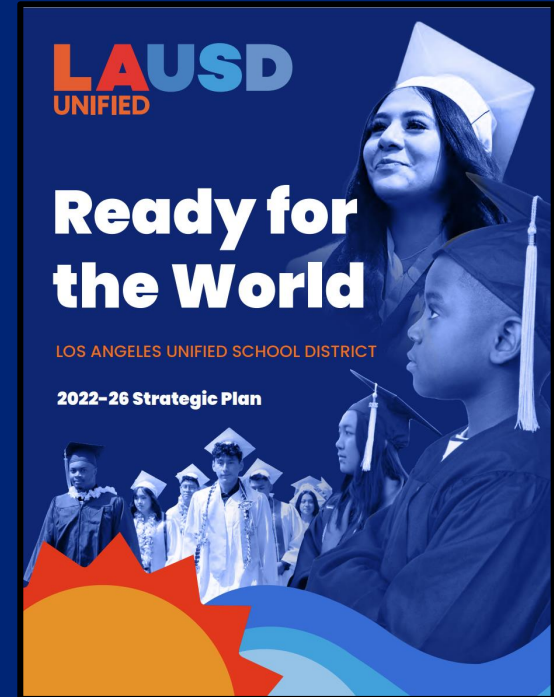


**LAUSD**  
UNIFIED

# **Strategic Plan: School Experience Survey Connection**

## **PILLAR 2**

**PRIORITIES 2A and 2C**



# Ready for the World



## School Experience Survey (SES)

- Purpose of the SES
- Components of the SES
- Importance of SES results
- SES connections to Strategic Plan
- Examining SES results
- Next Steps



**LAUSD**  
UNIFIED



# 2024-2025 SCHOOL EXPERIENCE SURVEY

Your voice matters. Let us know what you think!



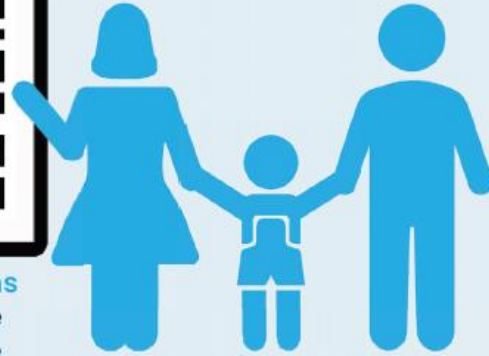
Students



Staff



Parents / Guardians  
and **Staff** Take the  
survey online here



Parents/Guardians

# School Experience Survey Purpose

The School Experience Survey is designed to gather feedback from students, parents, teachers, and staff so that schools can learn what they are doing well and what they need to work on.



# School Experience Survey Organization

The School Experience Survey (SES) is administered each fall to 4 “**Groups**” of people. Survey items are organized into 3 “**Categories**,” with several “**Content Areas**” *each* to further organize the survey items.

SES Groups	SES Categories		
	Academics	School Climate	Social-Emotional Learning
	Content Areas:	Content Areas:	Content Areas:
Students:	Academic Focus	Bullying	Growth Mindset
	Cognitive Engagement	Connectedness	Self-efficacy
	Future Orientation	Expectations for Behavior	Self-management
	Technology	Opp. for Part. & Leadership	Student Social Awareness
		Safety	Self-Awareness
All Staff:			Responsible Decision-Making
	Academic Focus	Resource Availability	n/a
		Safety	n/a
		School Climate Staff	n/a
		School Climate Students	n/a
		School Discipline	n/a
Teachers:		Student Behavior	n/a
	Educator Development	Teaching Satisfaction	n/a
	Focus on English Learners		n/a
	Instructional Improvement		n/a
Parents:	Integrated Technology		n/a
	Future Orientation	Customer Service	n/a
	High Quality Schooling	Parent Engagement	n/a
		Parent Involvement	n/a
		Resource Availability	n/a
		Safety	n/a

# Importance of Survey Results



**The School Experience Survey (SES) provides important data for a number of District and School requirements, including:**

- ✓ State requirement to administer a “Local Climate Survey” every year and to report results
- ✓ Local Control and Accountability Plan (LCAP)
- ✓ School Plan for Student Achievement (SPSA)
- ✓ Accrediting Commission for Schools, Western Association of Schools and Colleges (ACS WASC)
- ✓ **LAUSD Strategic Plan**



**LAUSD**  
UNIFIED

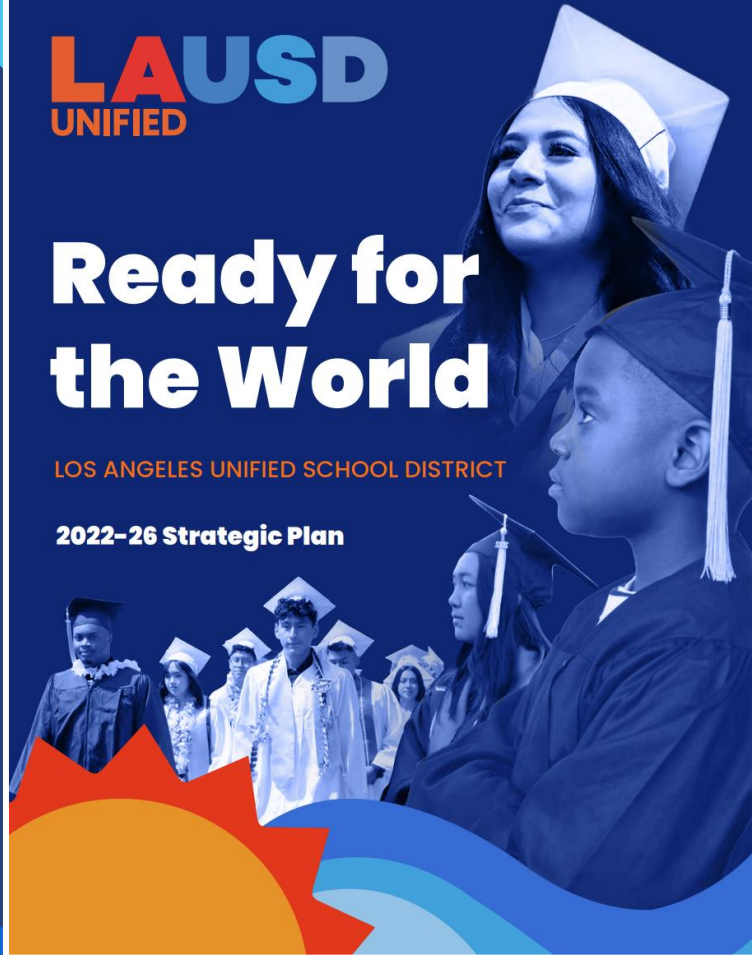
# ***Strategic Plan:*** ***A Quick Introduction***

**LAUSD**  
UNIFIED

## **Ready for the World**

LOS ANGELES UNIFIED SCHOOL DISTRICT

**2022–26 Strategic Plan**







Go To: <https://achieve.lausd.net/Page/1>

MENU



LOS ANGELES UNIFIED SCHOOL DISTRICT

LOS ANGELES UNIFIED SCHOOL DISTRICT

## Board Meeting Agendas

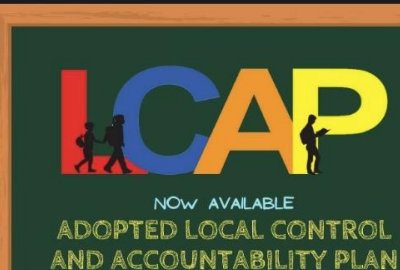
➤ Board of Education Meeting  
Agendas

## LAUSD UNIFIED Ready for the World

➤ Download Los Angeles  
Unified's 2022-26 Strategic  
Plan



➤ 100-Day Plan Report



Translate < En Español Homepage Feedback Sign In

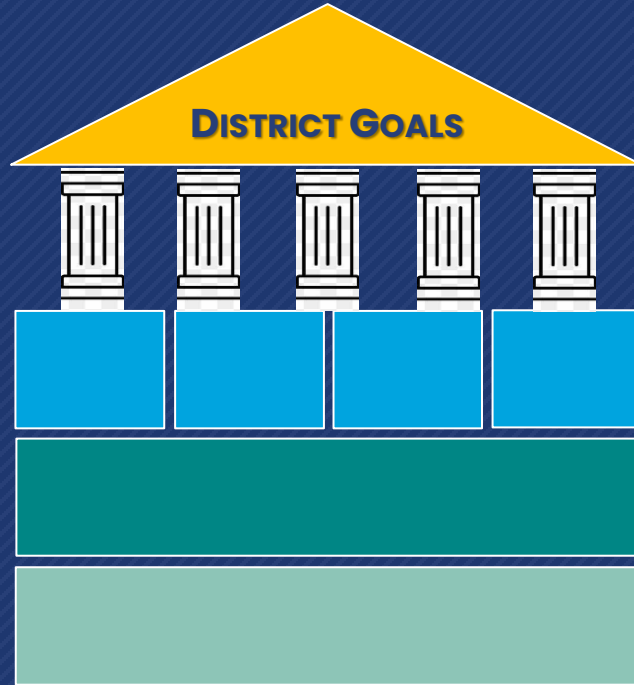


Accessing the  
Strategic Plan

**LAUSD**  
UNIFIED



# Building Blocks of the Strategic Plan



**Pillars** – 5 Critical areas we will focus on over the next four years.

**Priorities** – 4 subcategories required to successfully support each pillar.

**Strategies** – Specific actions we can take to advance all priorities.

**Measures of Success** – Metrics used to measure progress.

# Strategic Plan Pillars and their Priorities



1

## Academic Excellence

1A. High Quality Instruction

1B. Enriching Experiences

1C. Eliminating Opportunity Gaps

1D. College and Career Readiness

2

## Joy and Wellness

2A. Welcoming Learning Environments

2B. Whole-Child Well-Being

2C. Strong Social-Emotional Skills

2D. Outstanding Attendance

3

## Engagement and Collaboration

3A. Strong Relationships

3B. Accessible Information

3C. Leading for Impacts

3D. Honoring Perspectives

4

## Operational Effectiveness

4A. Data-Driven Decision-Making

4B. Modernizing Infrastructure

4C. Sustainable Budgeting

4D. District of Choice

5

## Investing in Staff

5A. Diverse Workforce

5B. Professional Learning

5C. Staff Wellness

5D. High Performance Standards



**LAUSD**  
UNIFIED

# **School Experience Survey:** ***Connections to the Strategic Plan***

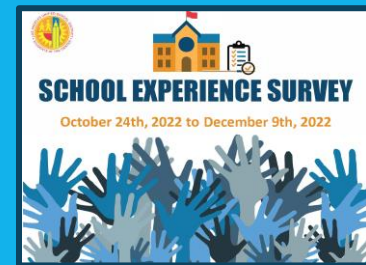
# SES and the Strategic Plan

LAUSD 2022–26 Strategic Plan

**SES results are directly tied to 4 of the Strategic Plan's 5 pillars:**

- **Pillar 1:** *Academic Excellence*
- **Pillar 2:** *Joy and Wellness*
- **Pillar 3:** *Engagement and Collaboration*
- **Pillar 5:** *Investing in Staff*

# School Experience Survey (SES): Direct Connections to the Strategic Plan



In the Strategic Plan, **37 SES items** are identified in **13 Measures of Success** across **Pillars 1, 2, 3, and 5** and these items specifically address **8 Priorities** for the District.



**LAUSD**  
UNIFIED



# PILLAR 2

*Joy and Wellness*



## Pillar 2: Joy and Wellness

*Safe and Healthy Environments to Promote Joy and Wellness*



## **Pillar 2 Priorities that are covered in the SES:**

**2A:** Welcoming Learning Environments [SES Category: “School Climate”]

**2C:** Strong Social-Emotional Skills [SES Category: “Social-Emotional Learning”]

**NOTE:** Only **Priorities 2A and 2C** have specific metrics that must be tracked each year using SES data so this presentation will focus on these priorities and metrics. *If you need additional SES items for school plans or other uses, there are no SES items that address Priorities 2B or 2D.*



**LAUSD**  
UNIFIED



PILLAR 2

**Priority 2A:**

***Welcoming Learning Environments***

# 2A: Welcoming Learning Environments

*Focus on consistent implementation of high-quality instruction to improve student outcomes*



**LAUSD**  
UNIFIED

## Why This Matters



Design and sustain **welcoming**, safe, environmentally friendly, affirming, and **inclusive** learning environments.

## 2A Strategies:

- ✓ Support and build capacity to implement affirming, welcoming, and trauma-informed practices
- ✓ Increase staff awareness/capacity to support students re: sexual orientation, gender identity/expression
- ✓ Develop safe/sustainable green spaces, outdoor learning environments, and shaded areas at each school
- ✓ Ensure “safe passage” to and from school through coordination with local civic and safety organizations
- ✓ Create asset-based and culturally responsive classrooms and curricula that value and celebrate the diverse backgrounds of our students
- ✓ Engage students in regular, inclusive celebrations and community events that recognize diverse cultures
- ✓ Increase access to other safe learning and community spaces, including libraries and partner organizations

## Pillar 2: Joy and Wellness

*Priority 2A: Welcoming Learning Environments*



### SES “School Climate” Content Area for **Priority 2A:**

✓ **Safety** [Students]

**NOTE:** Only SES *School Climate* category’s “**Safety**” content area for Students includes the survey item that is needed for the metric that must be tracked each year using SES data. Therefore, this presentation will only focus on this area. *If you need additional SES items for school plans or other uses, there are some items found in the other SES School Climate Content Areas Bullying [Students]; Connectedness [Students]; Opportunities for Participation & Leadership [Students]; School: Students [All Staff]; and Student Behavior [All Staff] that can be used in addition to items in Safety [Parents] and Safety [All Staff].*

# School Experience Survey Items for **STRATEGIC PLAN PILLAR 2**

Group: **Students** Category: **School Climate** Content Area: **Safety**

Please indicate how strongly you agree or disagree with the following statements.

Strongly  
Disagree

Disagree

Neither  
Disagree  
nor Agree

Agree

Strongly  
Agree

**I feel safe in this school or in online school sessions.**

**[Strategic Plan Pillar 2: Priority 2A]**

()

()

()

()

()

**I feel safe in the neighborhood around this school.**

**[Strategic Plan Pillar 2: Priority 2A] NOTE: This item will only be used by the DISTRICT to track progress at the District-level. Schools will not have to track progress on this item.**

()

()

()

()

()

If I told a teacher or other adult at this school that another student was bullying me, he or she would try to help me.

()

()

()

()

()

Adults at my school have talked to me about what to do if someone makes me feel uncomfortable.

()

()

()

()

()

## Pillar 2, Priority 2A: Measuring Success



**LAUSD**  
UNIFIED

### **2A. Welcoming Learning Environments** *(Part 1 of 2)*



Increase the percentage of **students** reporting on the School Experience Survey that they ***feel safe at school.***

#### **2A District Goal**

**+9.3 pts.**

Increase the percentage of students reporting on the School Experience Survey that they feel safe at school to 82% (from 72.7% in 2021-22).





**LAUSD**  
UNIFIED



PILLAR 2

# **Priority 2C:** ***Strong Social-Emotional Skills***

## 2C: Strong Social-Emotional Skills

*Eliminate opportunity gaps, advance anti-racist instructional practices, and personalize learning for all students*



**LAUSD**  
UNIFIED

### Why This Matters



Social-emotional skills will enable **students** to **learn** and **positively contribute** to the broader community.

### 2C Strategies:

- ✓ Provide prof. dev. opportunities focused on deepening staff knowledge, skills, and dispositions to support students' social/emotional needs
- ✓ Integrate SEL into instruction and provide effective, evidence-based curricula to support social development
- ✓ Expand access to resources/curricula to build capacity of families, staff, and community to support students
- ✓ Develop school awareness and use of practices that support positive individual wellness
- ✓ Create opportunities for students to demonstrate and apply positive social-emotional behaviors at school and in other social interactions
- ✓ Build capacity of all adults on campus on the use of Positive Behavior Interventions and Supports and Restorative Practices to promote a positive culture in the classroom

# Pillar 2: Joy and Wellness

## Priority 2C: Strong Social-Emotional Skills



### SES “Social-Emotional Learning” Content Areas for Priority 2C:

- ✓ Growth Mindset [Students]
- ✓ Self-Efficacy [Students]
- ✓ Self-Management [Students]
- ✓ Social Awareness [Students]

**NOTE:** Only SES *Social-Emotional Learning* category’s “**Growth Mindset, Self-Efficacy, Self-Management, and Social Awareness**” content areas for students includes the survey items that are needed for the metrics that must be tracked each year using SES data. \*New content areas “Self-Awareness” and “Responsible Decision-Making” are being piloted this fall and will not be included in the metrics for Priority 2C.

# School Experience Survey Items for STRATEGIC PLAN PILLAR 2

Group: **Students** Category: **Social-Emotional Learning** Content Area: **Growth Mindset**

Please indicate how strongly you agree or disagree with the following statements.

Strongly  
Disagree

Disagree

Neither  
Disagree  
nor Agree

Agree

Strongly  
Agree

I can change my intelligence with hard work.

()

()

()

()

()

I can increase my intelligence by challenging myself.

()

()

()

()

()

I am capable of learning anything.

()

()

()

()

()

I can do well in a subject even if I am not naturally good at it.

()

()

()

()

()

**\*OVERALL GROWTH MINDSET**

*[Strategic Plan Pillar 2: Priority 2C]*

\*Note: Aggregation of all 4 item results in [SES Results Dashboard](#).

## School Experience Survey Items for STRATEGIC PLAN PILLAR 2

Group: **Students** Category: **Social-Emotional Learning** Content Area: **Self-Efficacy**

<i>Please indicate how strongly you agree or disagree with the following statements.</i>	<i>Strongly Disagree</i>	<i>Disagree</i>	<i>Neither Disagree nor Agree</i>	<i>Agree</i>	<i>Strongly Agree</i>
I can earn high marks/grades in my classes.	()	()	()	()	()
I can do well on all my tests, even when they're difficult.	()	()	()	()	()
I can master the hardest topics in my classes.	()	()	()	()	()
I can meet all the learning goals my teachers set.	()	()	()	()	()

**\*OVERALL SELF-EFFICACY**

**[Strategic Plan Pillar 2: Priority 2C]**

\*Note: Aggregation of all 4 item results in [SES Results Dashboard](#).

# School Experience Survey Items for STRATEGIC PLAN PILLAR 2

Group: **Students** Category: **Social-Emotional Learning** Content Area: **Self-Management**

<i>Please indicate how strongly you agree or disagree with the following statements.</i>	<i>Strongly Disagree</i>	<i>Disagree</i>	<i>Neither Disagree nor Agree</i>	<i>Agree</i>	<i>Strongly Agree</i>
I came to class prepared.	()	()	()	()	()
I remembered and followed directions.	()	()	()	()	()
I got my work done right away instead of waiting until the last minute.	()	()	()	()	()
I paid attention, even when there were distractions.	()	()	()	()	()
I stayed calm, even when others bothered or criticized me.	()	()	()	()	()

**\*OVERALL SELF-MANAGEMENT** [Strategic Plan Pillar 2: Priority 2C]

\*Note: Aggregation of all 5 item results in [SES Results Dashboard](#).



# School Experience Survey Items for **STRATEGIC PLAN PILLAR 2**

Group: **Students** Category: **Social-Emotional Learning** Content Area: **Social Awareness**

<i>Please indicate how strongly you agree or disagree with the following statements.</i>	<i>Strongly Disagree</i>	<i>Disagree</i>	<i>Neither Disagree nor Agree</i>	<i>Agree</i>	<i>Strongly Agree</i>
I often complimented others' accomplishments.	()	()	()	()	()
I got along well with students who are different from me.	()	()	()	()	()
When others disagreed with me, I was respectful of their views	()	()	()	()	()
I was able to clearly describe my feelings.	()	()	()	()	()
I carefully listened to other people's points of view.	()	()	()	()	()

**\*OVERALL SOCIAL AWARENESS** [Strategic Plan Pillar 2: Priority 2C]

\*Note: Aggregation of all 5 item results in [SES Results Dashboard](#).

## Pillar 2, Priority 2C: Measuring Success



### 2C. Strong Social-Emotional Skills



Increase **student social-emotional learning** (SEL) competencies by 8 percentage points by June 2026.

#### 2C District Goal

**+8 pts.**

At each school level, students in elementary, middle school, and high school will demonstrate growth of 8 percentage points in each of the SEL competencies (*growth mindset, self-efficacy, self-management, and social awareness*) by June 2026 as preliminarily measured by the School Experience Survey with full transition to a portfolio rubric to be implemented by the 2023-24 school year.



**LAUSD**  
UNIFIED

# **Examining School SES Results:**

***Planning for Success and Tracking  
Progress Towards Goals***



## Prerequisites for this Section of the Presentation

**NOTE:** Before proceeding with your School Team's "Planning for Success" exercise, please ensure the following tasks have been completed:

- 1) Ensure all participants are familiar with how to use the SES Results Dashboard
  - ✓ See training presentation: "**School Experience Survey-Accessing Results Using the SES Results Dashboard**" for a quick overview of how to find your results.
- 2) Locate each of your school's **13** Measures of Success and input each Fall 2021 SES baseline percentage in *Column G* of your Progress Tracker Excel File.
  - ✓ See training presentation: "**Using the Strategic Plan SES Metrics and Goals 2022-2026 Progress Tracker Excel File**" for a quick overview of how to use this tool.

# Planning for Success



**LAUSD**  
UNIFIED

Identify a **Pillar** and **Priority** to focus on and begin by asking these questions:

*What?*



*Where?*



*How?*

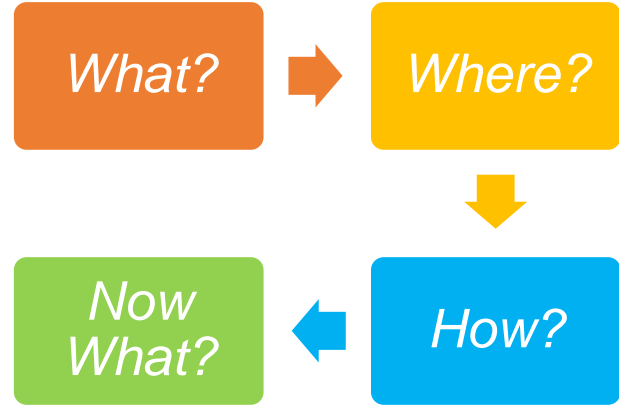


*Now  
What?*

# School Team Planning Exercise: Questions to Ask

## 1. WHAT?

- What is the Pillar and Priority we are focusing on?
- What is the Strategic Plan Priority's Measure of Success?



## 2. WHERE?

- Where are we now and where do we need to be by 2026?
  - ✓ **Fall 2021 baseline** *(from the SES Dashboard)*
  - ✓ **June 2026 Goal** *(from Progress Tracker)*

## 3. HOW?

- How can we address this Priority?
  - ✓ Brainstorm ideas/strategies that might work *(review slide 17 for possible strategies)*
  - ✓ Choose 1 idea/strategy that you will implement to achieve the 2026 Goal

## 4. NOW WHAT?

- Now that we have chosen our solution, what are the next steps?
  - ❖ Action Plan:
    - What budget or tools are available?
    - What additional resources/support do we need?
    - Who is available to work on this project?
    - Possible hurdles to overcome?





# School Team Planning Exercise: Questions Template



School Team Planning Exercise to Address **PILLAR:** \_\_\_\_\_ **PRIORITY:** \_\_\_\_\_

<b>What?</b>	<b>What is the Strategic Plan Priority's Measure of Success?</b>
<b>Where?</b>	<p><b>Where are we now and where do we need to be by 2026?</b></p> <p>Fall 2021 BASELINE: _____ % (from SES Dashboard)</p> <p>June 2026 GOAL: _____ % (from "Strategic Plan SES Metrics and Goals_2022-2026 Progress Tracker Excel File")</p>
<b>How?</b>	<p><b>How can we address this Priority?</b></p> <p>List of possible ideas/strategies<sup>1</sup>:</p> <ul style="list-style-type: none"> <li>• _____</li> <li>• _____</li> <li>• _____</li> <li>• _____</li> <li>• _____</li> <li>• _____</li> <li>• _____</li> </ul> <p><b>Solution Selected</b> (Choose 1 idea/strategy that you will implement to achieve your 2026 Goal):</p>
<b>Now What?</b>	<p><b>Now that we have chosen our solution, what are the next steps?</b></p> <p>❖ <b>ACTION PLAN</b> (things to consider):</p> <ul style="list-style-type: none"> <li>✓ What budget or tools are available?</li> <li>✓ What additional resources/support do we need?</li> <li>✓ Who is available to work on this project?</li> <li>✓ Possible hurdles to overcome?</li> </ul>

<sup>1</sup> For inspiration, you can find Strategies for each Priority listed in the Strategic Plan

# School Team Planning Exercise: Action Plan Template

[SCHOOL LOGO]

SAMPLE School Action Plan Template for: **PILLAR** \_\_\_\_ **PRIORITY** \_\_\_\_

School Year: 2022-23 **Our Fall 2021 BASELINE:** \_\_\_\_% **Our June 2026 GOAL:** \_\_\_\_%

**Objective:** \_\_\_\_\_

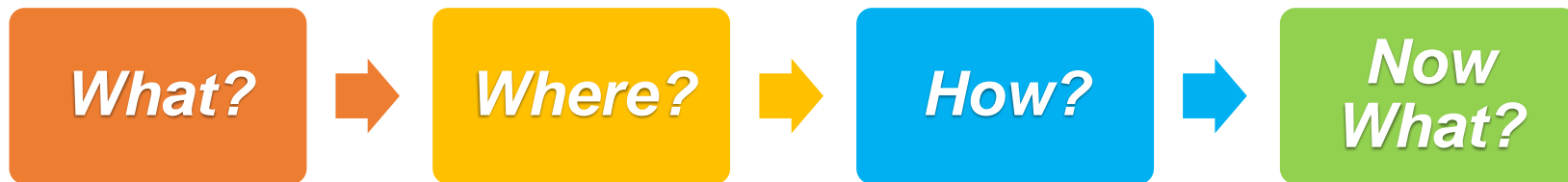
**Measure of Success:**

\_\_\_\_\_ will increase  
by \_\_\_\_ percentage points by 2026.

STRATEGY	ACTIVITY	PERSON(S) RESPONSIBLE	RESOURCES	TIMELINE
A.	1. 2. 3. 4. 5.	1. 2.	1. 2. 3.	1. 2. 3. 4. 5.
B.	1.	1.	1.	1.

## Next Steps

- ✓ Continue planning exercise with school team for each Pillar/Priority.
- ✓ Once all Pillars/Priorities have been discussed and action plans have been drafted, prepare implementation rollout
- ✓ Meet with families to discuss how your school will use the School Experience Survey to address Strategic Plan Priorities
- ✓ Show where you are (baseline) and where you need to be by 2026 and how you will achieve each goal.



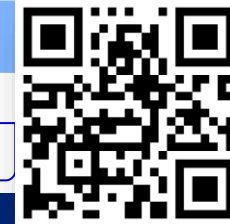


**LAUSD**  
UNIFIED

# **School Experience Survey:** ***Support***



# School Experience Survey Page



Website: <https://www.lausd.org/ses>

On this page you'll find the link to the dashboards for **Survey Results** as well as useful information like **Resources** and **Support**



**LAUSD**  
UNIFIED



**SCHOOL  
EXPERIENCE  
SURVEY**

DPAR Home

SES Home

About Us

Results

Resources

FAQs

Support

Take the survey

**School Experience  
Survey Home** 

**Your voice  
matters!**

# SES Support Team Contact Information



If you have any questions or concerns about the Survey, please contact the

***School Experience Survey Support Team:***

**Phone:** (213) 241-5600

**Email:** [SchoolExperienceSurvey@lausd.net](mailto:SchoolExperienceSurvey@lausd.net)

