



LAUSD
UNIFIED

Strategic Plan: School Experience Survey Connection

PILLAR 1

PRIORITY 1B: Enriching Experiences



Ready for the World



School Experience Survey (SES)

- Purpose of the SES
- Components of the SES
- Importance of SES results
- SES connections to Strategic Plan
- Examining SES results
- Next Steps



LAUSD
UNIFIED



2024-2025 SCHOOL EXPERIENCE SURVEY

Your voice matters. Let us know what you think!



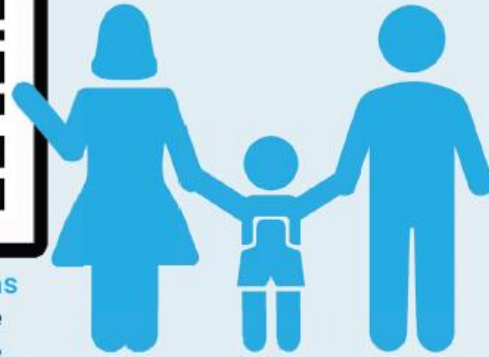
Students



Staff



Parents / Guardians
and **Staff** Take the
survey online here



Parents/Guardians

School Experience Survey Purpose

The School Experience Survey is designed to gather feedback from students, parents, teachers, and staff so that schools can learn what they are doing well and what they need to work on.



School Experience Survey Organization

The School Experience Survey (SES) is administered each fall to 4 “**Groups**” of people. Survey items are organized into 3 “**Categories**,” with several “**Content Areas**” *each* to further organize the survey items.

SES Groups	SES Categories		
	Academics	School Climate	Social-Emotional Learning
	Content Areas:	Content Areas:	Content Areas:
Students:	Academic Focus	Bullying	Growth Mindset
	Cognitive Engagement	Connectedness	Self-efficacy
	Future Orientation	Expectations for Behavior	Self-management
	Technology	Opp. for Part. & Leadership	Student Social Awareness
		Safety	Self-Awareness
All Staff:			Responsible Decision-Making
	Academic Focus	Resource Availability	n/a
		Safety	n/a
		School Climate Staff	n/a
		School Climate Students	n/a
		School Discipline	n/a
Teachers:		Student Behavior	n/a
	Educator Development	Teaching Satisfaction	n/a
	Focus on English Learners		n/a
	Instructional Improvement		n/a
Parents:	Integrated Technology		n/a
	Future Orientation	Customer Service	n/a
	High Quality Schooling	Parent Engagement	n/a
		Parent Involvement	n/a
		Resource Availability	n/a
		Safety	n/a

Importance of Survey Results



The School Experience Survey (SES) provides important data for a number of District and School requirements, including:

- ✓ State requirement to administer a “Local Climate Survey” every year and to report results
- ✓ Local Control and Accountability Plan (LCAP)
- ✓ School Plan for Student Achievement (SPSA)
- ✓ Accrediting Commission for Schools, Western Association of Schools and Colleges (ACS WASC)
- ✓ **LAUSD Strategic Plan**



LAUSD
UNIFIED

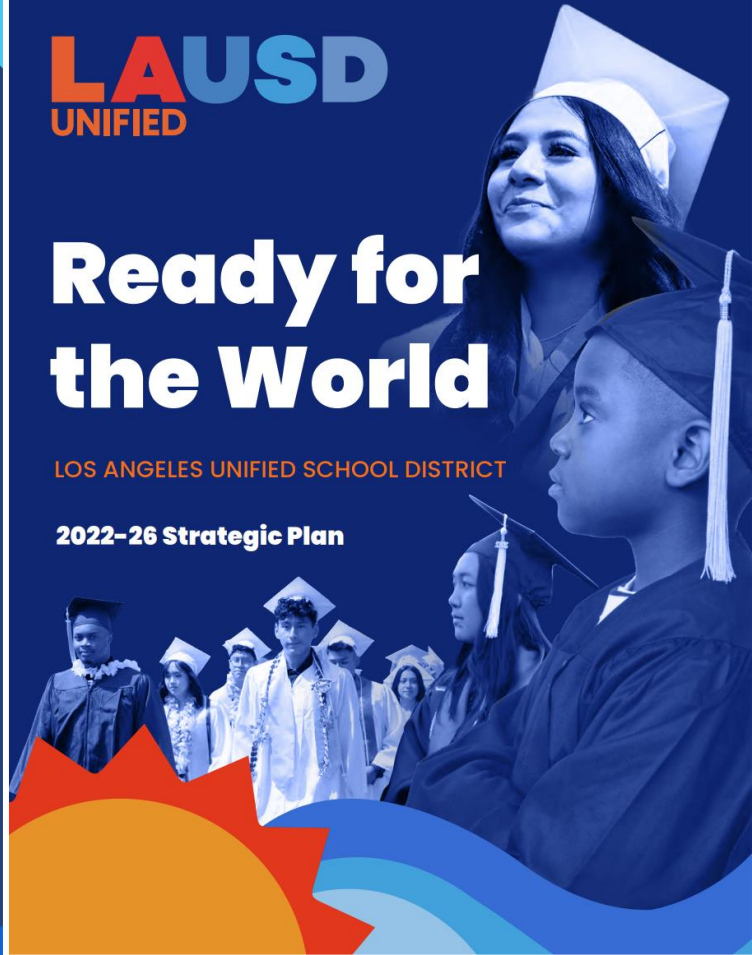
Strategic Plan: ***A Quick Introduction***

LAUSD
UNIFIED

Ready for the World

LOS ANGELES UNIFIED SCHOOL DISTRICT

2022–26 Strategic Plan





Go To: <https://achieve.lausd.net/Page/1>

MENU



LOS ANGELES UNIFIED SCHOOL DISTRICT

LOS ANGELES UNIFIED SCHOOL DISTRICT

Board Meeting Agendas

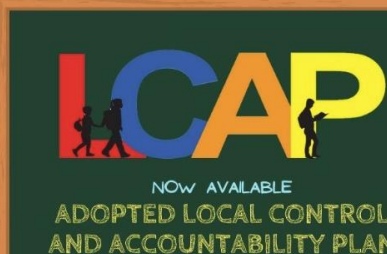
➤ Board of Education Meeting
Agendas

LAUSD UNIFIED Ready for the World

➤ Download Los Angeles
Unified's 2022-26 Strategic
Plan



➤ 100-Day Plan Report



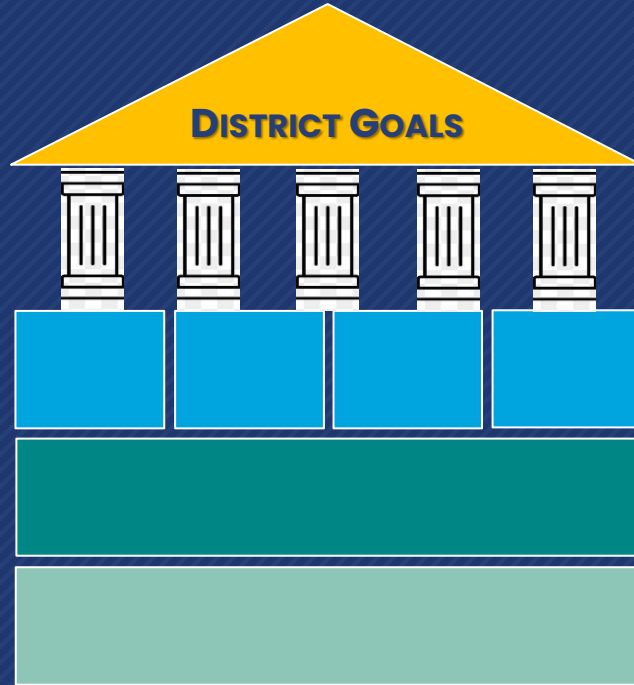
Translate < En Español Homepage Feedback Sign In



Accessing the
Strategic Plan

LAUSD
UNIFIED

Building Blocks of the Strategic Plan



Pillars – 5 Critical areas we will focus on over the next four years.

Priorities – 4 subcategories required to successfully support each pillar.

Strategies – Specific actions we can take to advance all priorities.

Measures of Success – Metrics used to measure progress.

Strategic Plan Pillars and their Priorities



1

Academic Excellence

1A. High Quality Instruction

1B. Enriching Experiences

1C. Eliminating Opportunity Gaps

1D. College and Career Readiness

2

Joy and Wellness

2A. Welcoming Learning Environments

2B. Whole-Child Well-Being

2C. Strong Social-Emotional Skills

2D. Outstanding Attendance

3

Engagement and Collaboration

3A. Strong Relationships

3B. Accessible Information

3C. Leading for Impacts

3D. Honoring Perspectives

4

Operational Effectiveness

4A. Data-Driven Decision-Making

4B. Modernizing Infrastructure

4C. Sustainable Budgeting

4D. District of Choice

5

Investing in Staff

5A. Diverse Workforce

5B. Professional Learning

5C. Staff Wellness

5D. High Performance Standards



LAUSD
UNIFIED

School Experience Survey: ***Connections to the Strategic Plan***

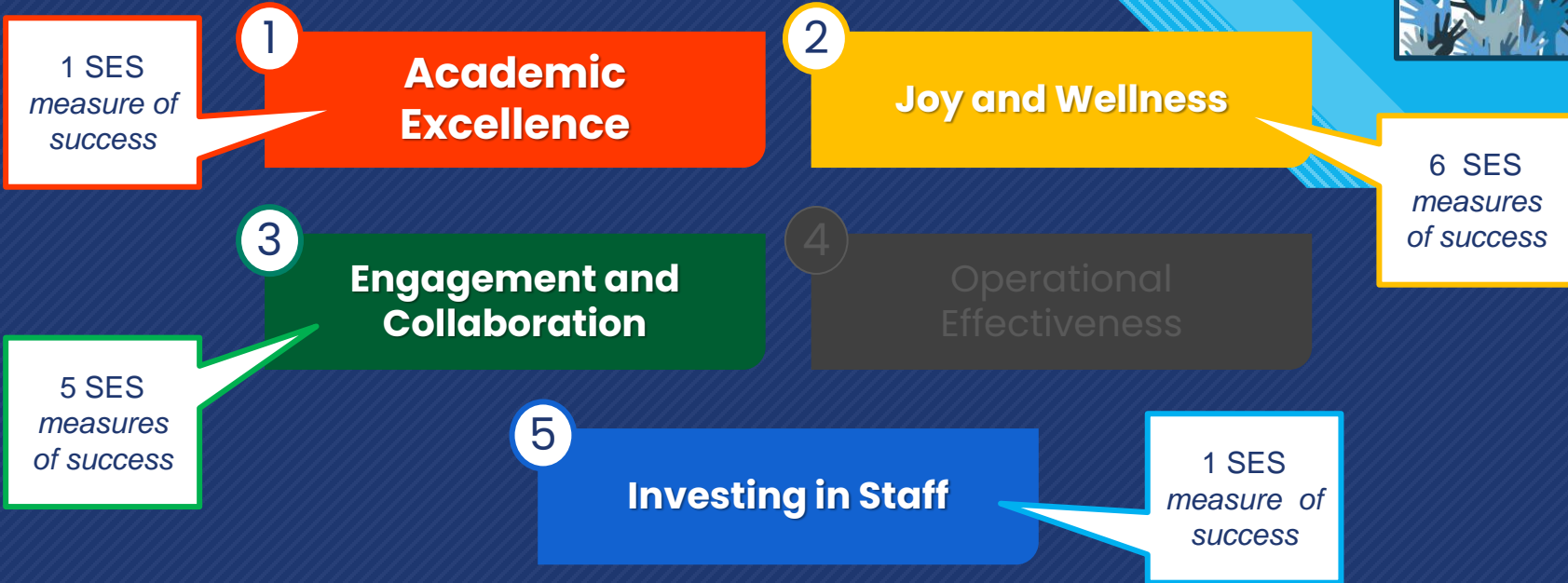
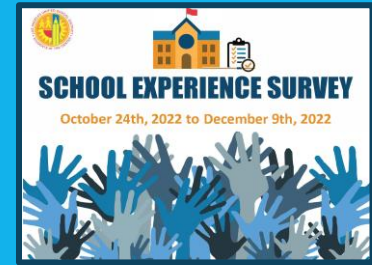
SES and the Strategic Plan

LAUSD 2022–26 Strategic Plan

SES results are directly tied to 4 of the Strategic Plan's 5 pillars:

- **Pillar 1:** *Academic Excellence*
- **Pillar 2:** *Joy and Wellness*
- **Pillar 3:** *Engagement and Collaboration*
- **Pillar 5:** *Investing in Staff*

School Experience Survey (SES): Direct Connections to the Strategic Plan



In the Strategic Plan, **37 SES items** are identified in **13 Measures of Success** across **Pillars 1, 2, 3, and 5** and these items specifically address **8 Priorities** for the District.



LAUSD
UNIFIED



PILLAR 1

Academic Excellence

Pillar 1: Academic Excellence

*Rigorous and Responsive Academic Programs
to Achieve Excellence for All*



Pillar 1 Priority that is covered in the SES:

1B: Enriching Experiences

[SES Category: "School Climate"]

NOTE: Only **Priority 1B** has a specific metric that must be tracked each year using SES data. Therefore, this presentation will focus only on this priority and metric. *If you need additional SES items for school plans or other uses, there are some that address both Priorities 1A and 1C. Items for 1D will be added next fall.*



LAUSD
UNIFIED



PILLAR 1

Priority 1B: *Enriching Experiences*

1B: Enriching Experiences

Deliver well-rounded, inspiring educational and enrichment experiences to instill and maintain a love of learning.



LAUSD
UNIFIED

Why This Matters



Establishing a ***well-rounded educational experience*** keeps students engaged, promotes joy in learning, and builds a variety of critical skills for world readiness.

1B Strategies:

- ✓ Offer and enroll students in a wide array of courses and experiences that support a well-rounded education
- ✓ Increase access to visual and performing arts programs at school sites
- ✓ Leverage programs such as the Cultural Arts Passport to create regular access to artistic and cultural experiences for students outside of the classroom
- ✓ Provide students with more opportunities to become multilingual through dual/world language programs
- ✓ Increase access to gifted/talented programs by addressing the disproportionality of students identified
- ✓ Expand outdoor education and nature-based experiences
- ✓ Create opportunities for students in all grade levels to engage in extracurricular activities

Pillar 1: Academic Excellence

Priority 1B: Enriching Experiences



SES “School Climate” Content Area for **Pillar 1–Priority 1B:**

✓ **Connectedness** [Students]

NOTE: Only SES School Climate category’s “**Connectedness**” content area for Students includes the survey item that is needed for the metric that must be tracked each year using SES data. Therefore, this presentation will only focus on this area. *If you need additional SES items for school plans or other uses, there are some student items found in the SES School Climate Content Area, “Opportunities for Participation and Leadership” [Students] that can be used.*

School Experience Survey Items for **STRATEGIC PLAN PILLAR 1**

Group: **Students**

Category: **School Climate**

Content Area: **Connectedness**

Please indicate how strongly you agree or disagree with the following statements.

*Strongly
Disagree*

Disagree

*Neither
Disagree nor
Agree*

Agree

*Strongly
Agree*

I am happy to be at this school. [Strategic Plan Pillar 1: **Priority 1B**]

()

()

()

()

()

I feel like I am part of this school.

()

()

()

()

()

I feel close to people at this school.

()

()

()

()

()

The teachers at this school treat students fairly.

()

()

()

()

()

Teachers care if I'm absent from school.

()

()

()

()

()

I feel accepted for who I am at this school.

()

()

()

()

()

Adults at this school treat all students with respect.

()

()

()

()

()

Kids at this school are kind to each other.

()

()

()

()

()

There is an adult at my school whom I trust and can talk to no matter what is bothering me.

()

()

()

()

()

There is at least one adult at my school who supports me.

()

()

()

()

()

Teachers at my school know me.

()

()

()

()

()

LGBTQ (lesbian, gay, bisexual, transgender, and/or queer) students at this school are accepted. [GRADES 7-12 ONLY]

()

()

()

()

()

Pillar 1, Priority 1B: *Measuring Success*



LAUSD
UNIFIED

1B. Enriching Experiences



Increase the percentage of **students** reporting on the School Experience Survey that they ***are happy*** to be at their school.

1B District Goal

+10 pts. (ES)

+7.4 pts. (MS)

+7 pts. (HS)

Elementary, middle, and high schools will increase by 10, 7.4, and 7 percentage points respectively by June 2026 the percentage of students reporting on the School Experience Survey that they are happy to be at their school.



LAUSD
UNIFIED

Examining School SES Results:

***Planning for Success and Tracking
Progress Towards Goals***



Prerequisites for this Section of the Presentation

NOTE: Before proceeding with your School Team's "Planning for Success" exercise, please ensure the following tasks have been completed:

- 1) Ensure all participants are familiar with how to use the SES Results Dashboard
 - ✓ See training presentation: "**School Experience Survey-Accessing Results Using the SES Results Dashboard**" for a quick overview of how to find your results.
- 2) Locate each of your school's **13** Measures of Success and input each Fall 2021 SES baseline percentage in *Column G* of your Progress Tracker Excel File.
 - ✓ See training presentation: "**Using the Strategic Plan SES Metrics and Goals 2022-2026 Progress Tracker Excel File**" for a quick overview of how to use this tool.

Planning for Success



LAUSD
UNIFIED

Identify a **Pillar** and **Priority** to focus on and begin by asking these questions:

What?



Where?



How?

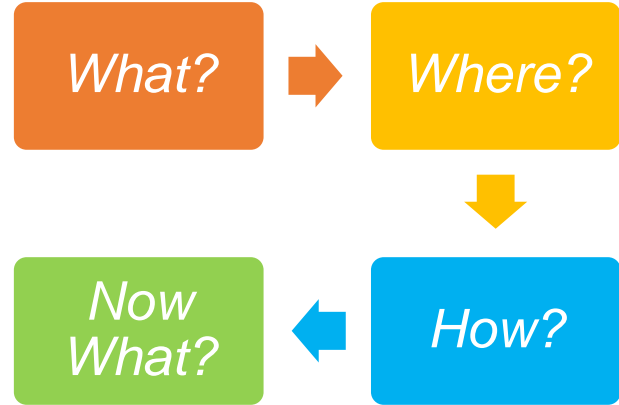


*Now
What?*

School Team Planning Exercise: Questions to Ask

1. WHAT?

- What is the Pillar and Priority we are focusing on?
- What is the Strategic Plan Priority's Measure of Success?



2. WHERE?

- Where are we now and where do we need to be by 2026?
 - ✓ **Fall 2021 baseline** *(from the SES Dashboard)*
 - ✓ **June 2026 Goal** *(from Progress Tracker)*

3. HOW?

- How can we address this Priority?
 - ✓ Brainstorm ideas/strategies that might work *(review slide 17 for possible strategies)*
 - ✓ Choose 1 idea/strategy that you will implement to achieve the 2026 Goal

4. NOW WHAT?

- Now that we have chosen our solution, what are the next steps?
 - ❖ Action Plan:
 - What budget or tools are available?
 - What additional resources/support do we need?
 - Who is available to work on this project?
 - Possible hurdles to overcome?



School Team Planning Exercise: Questions Template



School Team Planning Exercise to Address **PILLAR:** _____ **PRIORITY:** _____

What?	What is the Strategic Plan Priority's Measure of Success?
Where?	Where are we now and where do we need to be by 2026? Fall 2021 BASELINE: _____ % <i>(from SES Dashboard)</i> June 2026 GOAL: _____ % <i>(from "Strategic Plan SES Metrics and Goals_2022-2026 Progress Tracker Excel File")</i>
How?	How can we address this Priority? <p>List of possible ideas/strategies¹:</p> <ul style="list-style-type: none"> • _____ • _____ • _____ • _____ • _____ • _____ • _____ <p>Solution Selected (Choose 1 idea/strategy that you will implement to achieve your 2026 Goal):</p>
Now What?	Now that we have chosen our solution, what are the next steps? <p>❖ ACTION PLAN <i>(things to consider)</i>:</p> <ul style="list-style-type: none"> ✓ What budget or tools are available? ✓ What additional resources/support do we need? ✓ Who is available to work on this project? ✓ <u>Possible hurdles</u> to overcome?

¹ For inspiration, you can find Strategies for each Priority listed in the Strategic Plan

School Team Planning Exercise: Action Plan Template

[SCHOOL LOGO]

SAMPLE School Action Plan Template for: **PILLAR** ____ **PRIORITY** ____

School Year: 2022-23 **Our Fall 2021 BASELINE:** ____% **Our June 2026 GOAL:** ____%

Objective: _____

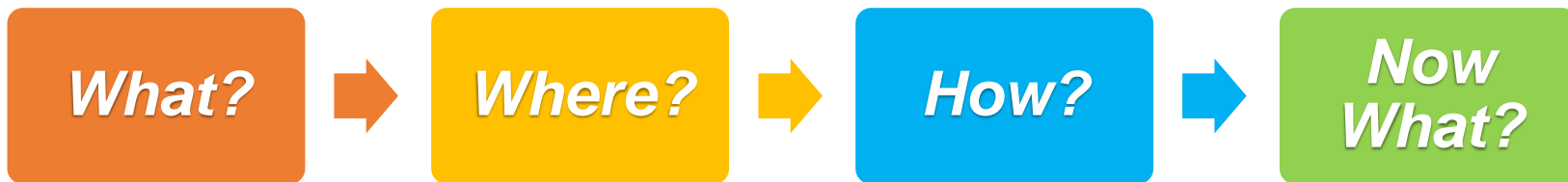
Measure of Success:

_____ will increase
by __ percentage points by 2026.

STRATEGY	ACTIVITY	PERSON(S) RESPONSIBLE	RESOURCES	TIMELINE
A.	1. 2. 3. 4. 5.	1. 2.	1. 2. 3.	1. 2. 3. 4. 5.
B.	1.	1.	1.	1.

Next Steps

- ✓ Continue planning exercise with school team for each Pillar/Priority.
- ✓ Once all Pillars/Priorities have been discussed and action plans have been drafted, prepare implementation rollout
- ✓ Meet with families to discuss how your school will use the School Experience Survey to address Strategic Plan Priorities
- ✓ Show where you are (baseline) and where you need to be by 2026 and how you will achieve each goal.



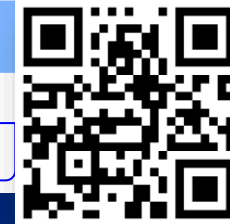


LAUSD
UNIFIED

School Experience Survey: ***Support***



School Experience Survey Page



Website: <https://www.lausd.org/ses>

On this page you'll find the link to the dashboards for **Survey Results** as well as useful information like **Resources** and **Support**



LAUSD
UNIFIED



**SCHOOL
EXPERIENCE
SURVEY**

DPAR Home

SES Home

About Us

Results

Resources

FAQs

Support

Take the survey

**School Experience
Survey Home**

**Your voice
matters!**

SES Support Team Contact Information



If you have any questions or concerns about the Survey, please contact the

School Experience Survey Support Team:

Phone: (213) 241-5600

Email: SchoolExperienceSurvey@lausd.net

