

Limited Wildfire Smoke Impact Assessment Topanga Charter Elementary School 2075 Topanga School Road and Topanga, California 90290

Los Angeles Unified School District
333 S. Beaudry Avenue, 21st Floor | Los Angeles California 90017

January 23, 2025 | Project No. 212936035



Geotechnical | Environmental | Construction Inspection & Testing | Forensic Engineering & Expert Witness

Geophysics | Engineering Geology | Laboratory Testing | Industrial Hygiene | Occupational Safety | Air Quality | GIS

Ninyo & Moore
Geotechnical & Environmental Sciences Consultants

Limited Wildfire Smoke Impact Assessment
Topanga Charter Elementary School
2075 Topanga School Road, Topanga, California 93010

Mr. Filmon Tesfaslasie
Los Angeles Unified School District,
Office of Environmental Health & Safety
333 South Beaudry Avenue, 21st Floor | Los Angeles, CA 90017

January 23, 2025 | Project No. 211936035

A handwritten signature in blue ink, appearing to read "David Kelly", followed by a horizontal line.

David Kelly, CAC, CRIE, LRC
Senior Project Environmental Scientist

A handwritten signature in blue ink, appearing to read "Stephen J. Waide".

Stephen J. Waide, CIH, CSP, CIEC, CMC
Principal Industrial Hygienist

A handwritten signature in blue ink, appearing to read "Anthony Lizzi".

Anthony Lizzi, PG, CHG
Principal Geologist

DMK/SJW/AJL/lva

CONTENTS

1	INTRODUCTION	1
2	BACKGROUND	1
3	SITE DESCRIPTION AND BACKGROUND	1
4	OBSERVATIONS AT TOPANGA CHARTER ELEMENTARY SCHOOL	2
5	CONCLUSIONS AND RECOMMENDATIONS	2
6	LIMITATIONS	3

FIGURES

- Figure 1 – Topanga Charter Elementary School and Location of Palisades Fire
- Figure 2 – Topanga Charter Elementary School Showing the Areas Inspected Which Require Cleaning

APPENDICES

- A – Certified Industrial Hygienist Documentation
- B – Photographs
- C – Inspection Spreadsheets

1 INTRODUCTION

This report contains findings, conclusions, and recommendations relevant to the limited wildfire smoke impact assessment conducted at Topanga Charter Elementary School located at 2075 Topanga School Road, in Topanga, California (subject school). Figure 1 shows the general location of the school site as well as an outline of the Palisades Fire limits. Ninyo & Moore's Certified Industrial Hygienist (CIH) Mr. Stephen Waide, assigned representatives, Messieurs David Pacheco and Abe Barocio, all Ninyo & Moore Industrial Hygienists, to conduct the assessment on January 18, 2025.

The assignment was made at the request of Mr. Anthony Espinoza of Los Angeles Unified School District (LAUSD), Office of Environmental Health & Safety (OEHS) on January 17, 2025, in response to potential impact to the subject school from smoke related to the Palisades Wildfire. A copy of Stephen Waide's CIH certification is included in Appendix A.

Our scope of services was limited to performing a visual inspection of the interior and exterior areas of the school; documenting our observations with field notes and photographs; being prepared to collect representative suspect samples of soot, char, and ash from selected surfaces, if necessary; and preparation of this report.

2 BACKGROUND

Ninyo & Moore understands that the Palisades Fire, which continues to burn at the time of this writing, has so far burned more than 24,000 acres in Los Angeles County, California. (<https://recovery.lacounty.gov/palisades-fire/>). Topanga Charter Elementary School is affected by smoke and debris. Topanga Charter Elementary School is located within approximately 2 miles northeast of the fire. Ninyo & Moore understands that minimal cleaning was accomplished by LAUSD plant managers at the schools prior to our evaluation. OEHS provided site maps and associated school building names for each site to facilitate Ninyo & Moore's site visit.

3 SITE DESCRIPTION AND BACKGROUND

Ninyo & Moore's CIH representatives visually inspected the exterior common areas and grounds and interior classrooms. Our assessments focused on looking for discoloration, dust films/residues or debris on surfaces that could potentially be attributed to wildfire smoke deposition. The presence or absence of such discoloration or debris was documented as well as photographed on site.

LAUSD representatives and Ninyo & Moore Industrial Hygienists determined on-site that testing for the presence of the combustion constituents' soot, char, and ash would not be necessary at the school site as visual inspections were successful at determining where further cleaning should be performed.

4 OBSERVATIONS AT TOPANGA CHARTER ELEMENTARY SCHOOL

On Saturday, January 18, 2025, Topanga Charter Elementary School (Topanga ES) required police escort and personnel met with the Los Angeles County Police Sheriff's Department at the Venice Senior High School parking lot prior to visiting the site. Prior to conducting the inspection, Ninyo & Moore personnel donned proper personal protective equipment (PPE) including N95 disposable filtering facepiece respirators. In general, visual observations of the interior surfaces of the classrooms and other occupied areas indicated low to moderate visible dust deposition on horizontal surfaces with suspected combustion constituents or other minor fire-related debris noted on selected floors, whiteboard trays, windowsills, shelves and blinds. Some interior areas had already been cleaned by LAUSD personnel at the time of our assessment. Exterior areas appeared relatively clean with no recommendations for further cleaning.

Odors related to the wildfire were not noted in indoor areas. Because a multitude of structures were destroyed during this fire, a calibrated Mini RAE® photo-ionization detector (PID) was utilized on site as a field screening tool to help identify whether measurable levels of gases or organic vapors were present in occupied areas. Organic vapors were not detected when using a PID. Figure 2 depicts the Topanga ES showing the areas inspected which require cleaning. Photographs of the site are provided in Appendix B. Specific classrooms and other interior areas are identified in Appendix C with notes provided for each inspected area.

5 CONCLUSIONS AND RECOMMENDATIONS

No standards or exposure limits exist specifically for carbonaceous material or combustion product settled on surfaces. In assessments such as this one, visible evidence of soot, char, and ash are sought out and cleaned where identified. When settled dust is identified that may or may not be a result of wildfire smoke, samples are sometimes collected to evaluate the relative percentages of combustion products in the settled dust. The presence of microscopic particles whose presence or absence cannot be detected by normal observation, and have no confirmable effect (such as staining, corrosion, or increased health risk), would not be expected to constitute a significant impact.

With this in mind, the mere presence of combustion products is not unusual nor does it necessarily constitute impact to indicate the need for special cleaning beyond everyday housekeeping or

maintenance. Charred plant tissue or ash would not constitute a specific health hazard (any more than any other number of particles). In many cases where the impact is not readily apparent, simple surface cleaning is all that is required.

According to our visual observation at this school site, some minor surface cleaning was necessary at the time of our assessment. Areas that needed further immediate cleaning are noted in the attached spreadsheet in Appendix C. The areas noted for further cleaning do not indicate that access to the areas should be strictly controlled, only that our visual inspections identified that additional cleaning would be helpful. We recommend that where notes appear in Appendix C that are associated with indoor areas that the cleaning be completed prior to general use of those indoor areas.

Finally, Ninyo & Moore does not believe that the special controls, PPE and training used by professional remediators is necessary for the cleaning of surfaces with combustion products present in amounts noted during our assessments. If suspected combustion constituents are identified in hidden areas at a later time, cleaning of these areas can be accomplished indoors by wet-wiping of these areas using normal household cleaning products and practices and outdoors with water washing. No other recommendations for further cleaning of the property are made.

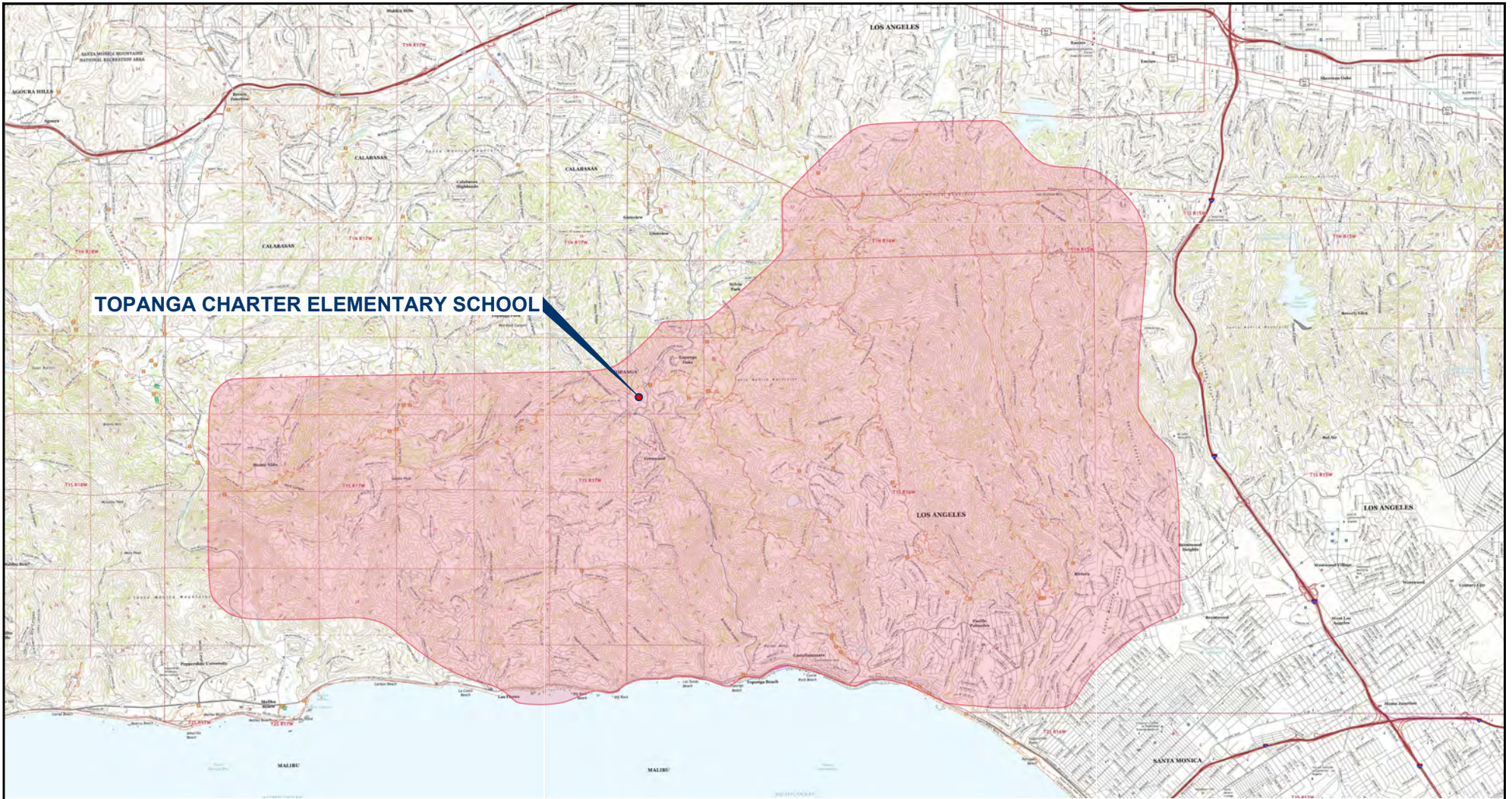
6 LIMITATIONS

This report was based on the most current information available on the contaminants of concern, and recommendations of common industry practice in remediation of wildfire smoke residue. Ninyo & Moore has performed the assessment set forth above in a thorough and professional manner consistent with industry guidelines and under supervision of a certified professional. Ninyo & Moore cannot guarantee and does not warrant that this limited assessment has revealed all adverse environmental conditions affecting the site. Nor can Ninyo & Moore warrant that the assessment requested would satisfy the dictates of, or provide a legal defense in connection with, environmental laws or regulations.

The results reported and any opinions reached by Ninyo & Moore are for the benefit of the client. Our conclusions, recommendations, and opinions are based on an analysis of the observed site conditions. It should be understood that changes to the applicable laws, regulations, codes, and standards of practice may occur due to government action or the broadening of knowledge



FIGURES

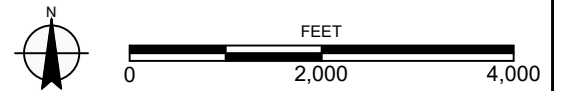


TOPANGA CHARTER ELEMENTARY SCHOOL

LEGEND

EXTENT OF PALISADES FIRE

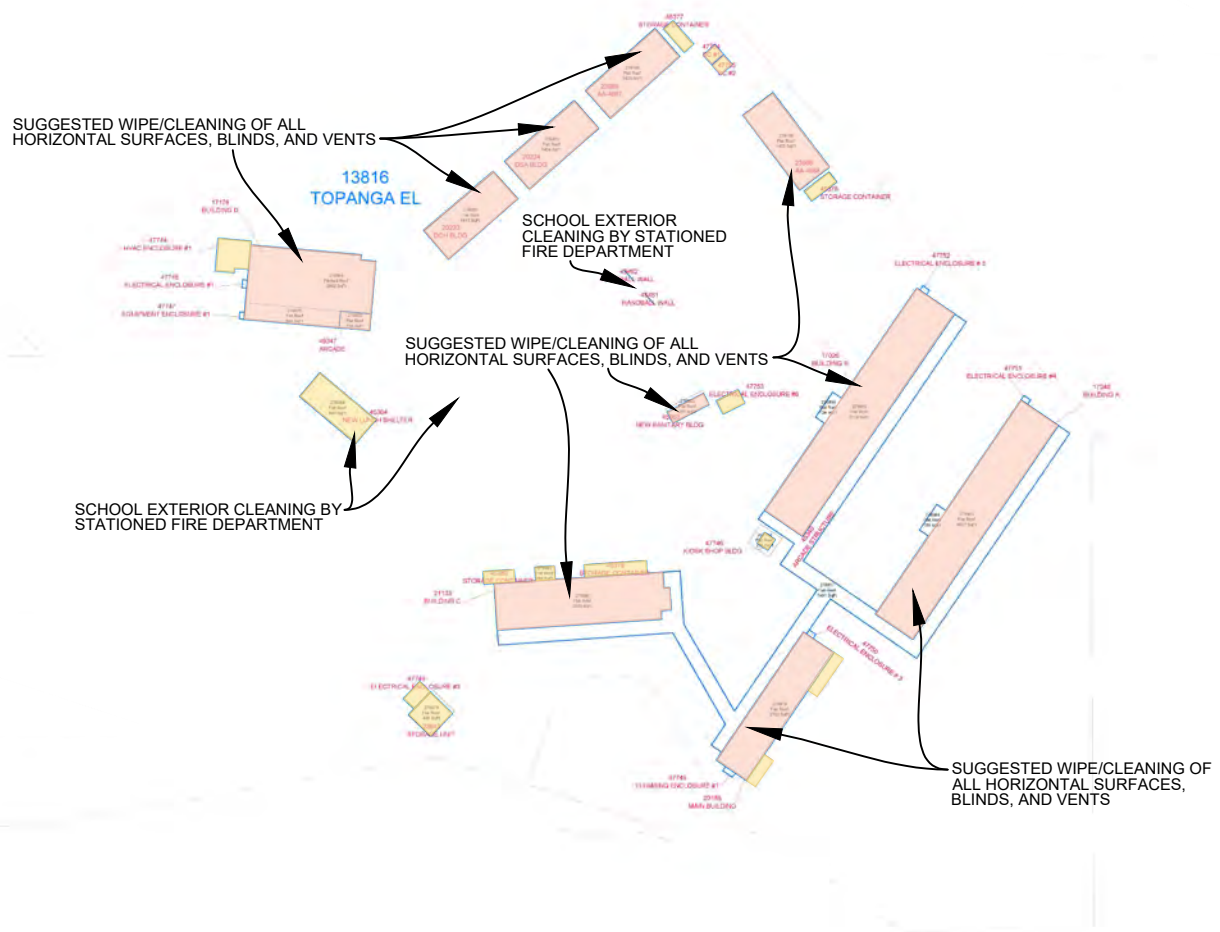
NOTE: DIMENSIONS, DIRECTIONS AND LOCATIONS ARE APPROXIMATE. | REFERENCE: USGS, 2022.



TOPANGA CHARTER ELEMENTARY SCHOOL AND LOCATION OF PALISADES FIRE

TOPANGA CHARTER ELEMENTARY SCHOOL
 22075 TOPANGA SCHOOL ROAD
 TOPANGA, CALIFORNIA
 211936035 | 1/25

FIGURE 1



LEGEND

	VISIBLE SMOKE/FIRE DEBRIS
	AREAS NOT ASSESSED

NOTE: DIMENSIONS, DIRECTIONS AND LOCATIONS ARE APPROXIMATE. | REFERENCE: LOS ANGELES UNIFIED SCHOOL DISTRICT, 2017.



NO TO SCALE

FIGURE 2

TOPANGA CHARTER ELEMENTARY SCHOOL SHOWING THE AREAS INSPECTED WHICH REQUIRE CLEANING

TOPANGA CHARTER ELEMENTARY SCHOOL
22075 TOPANGA SCHOOL ROAD
TOPANGA, CALIFORNIA

APPENDIX A

Certified Industrial Hygienist Documentation

The Board for Global EHS Credentialing (BGC)

through its vested authority, hereby confirms that

Stephen J. Waide

has met all requirements of education, experience, and examination, and on-going maintenance set forth through the BGC's American Board of Industrial Hygiene® (ABIH®) credentialing division for re-certification in the Comprehensive Practice of Industrial Hygiene and is thereby conferred the credential of

Certified Industrial Hygienist® (CIH®)

The aforementioned individual is given all rights, privileges, and responsibilities as both a diplomate of the BGC and holder of the CIH credential, provided that the credential is not suspended or revoked, and it is renewed annually. Moreover, the holder must meet all recertification requirements, including the obligation to practice ethically as prescribed by the BGC.

Credential Number: 7005 CP
Award Date: December 4, 1995
Expiration Date: June 1, 2027



Alan Leibowitz, CIH, CSP, FAIHA
Chair of the Board of Directors



Ulric K. Chung, MCS, PhD
Chief Executive Officer and Secretary



BOARD FOR GLOBAL EHS CREDENTIALING

6005 W. Saint Joe Hwy., Suite 300 Lansing, Michigan 48917-4876 **P:** (517) 321-2638 **F:** (517) 321-4624 **E:** info@EHSCredentialing.org

December 1, 2021

Stephen J. Waide, CIH
Ninyo & Moore
5710 Ruffin Road
San Diego CA 92123

Dear Stephen J. Waide,

I am pleased to inform you that your Certification Maintenance (CM) worksheet has been reviewed and your professional activities have fulfilled the Board's requirements for recertification. Your new certificate is enclosed.

Your next 60-month CM cycle will be from 1/1/2022 to 12/31/2026. Remember that you can earn CM credit only between your CM Cycle Start Date and End Date.

Key changes during your next CM cycle will be announced via email, which makes having your current email address very important. You can review your contact information, key CM cycle dates and begin entering your activities for your next CM cycle by logging into the *CAPS* system on the ABIH web site (we will no longer be accepting a cm worksheet via excel or paper).

The Board appreciates your continued professional service and support of its programs.

Sincerely,

Pamela J. Trim
Certification Director
517-853-5763
certificationdirector@gobgc.org



ANSI Accredited Program
PERSONNEL CERTIFICATION



International Occupational
Hygiene Association
Recognized Certification Board



APPENDIX B

Photographs



Photograph 1: View of the LAUSD Topanga Charter Elementary School.



Photograph 2: View of the floor in Building AA-4088. Visible smoke/fire debris.

FIGURE B-1



Photograph 3: View of the blinds in building AA-4087. Minor Visible smoke/ fire debris.



Photograph 4: View of DSA building Shelves. Smoke/ fire debris observed

FIGURE B-2



Photograph 5: View of DOH building window sills. Visible smoke/fire debris.



Photograph 6: View of the New Sanitary Building. Visible smoke/fire debris.

FIGURE B-3

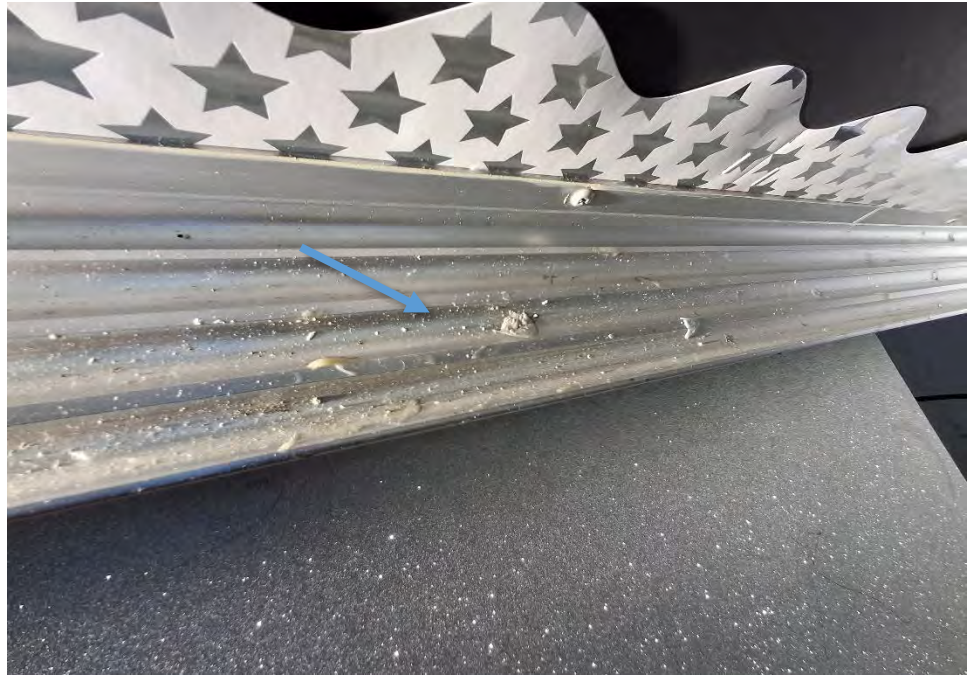


Photograph 7: View of outdoor playground. No smoke/fire debris observed.



Photograph 8: View of the window sills in the Main Building classroom. Visible smoke/fire debris

FIGURE B-4



Photograph 9: View of the whiteboard tray sand adjacent desk in Building A. Visible smoke/fire debris



Photograph 10: View of the book shelves in the Library of Building A. Visible smoke/fire debris.

FIGURE B-5

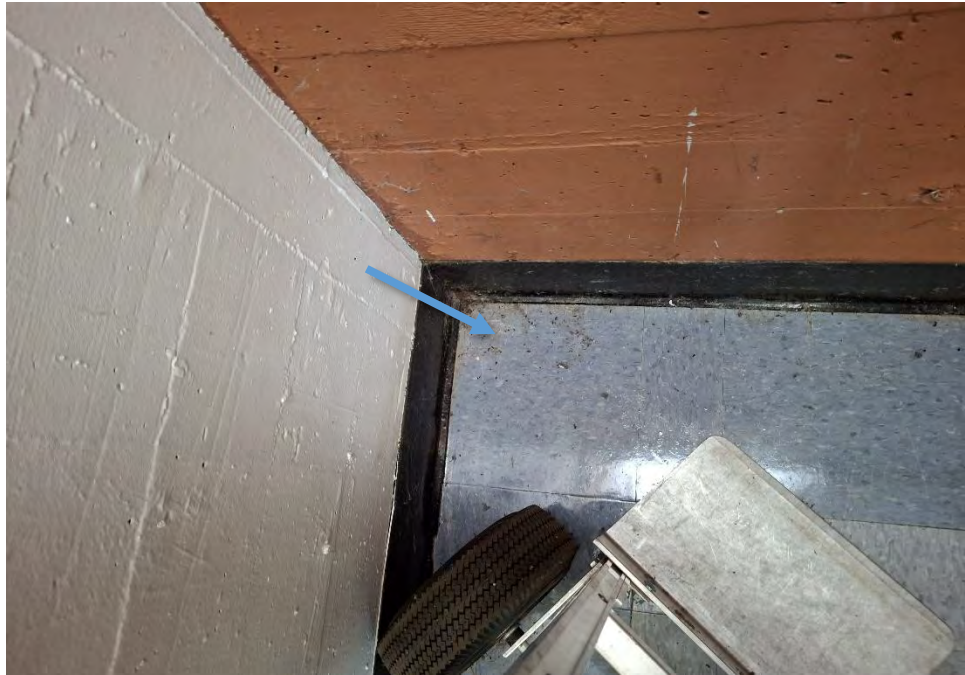


Photograph 11: View of the hand dryer in Building B. Visible smoke/fire debris.

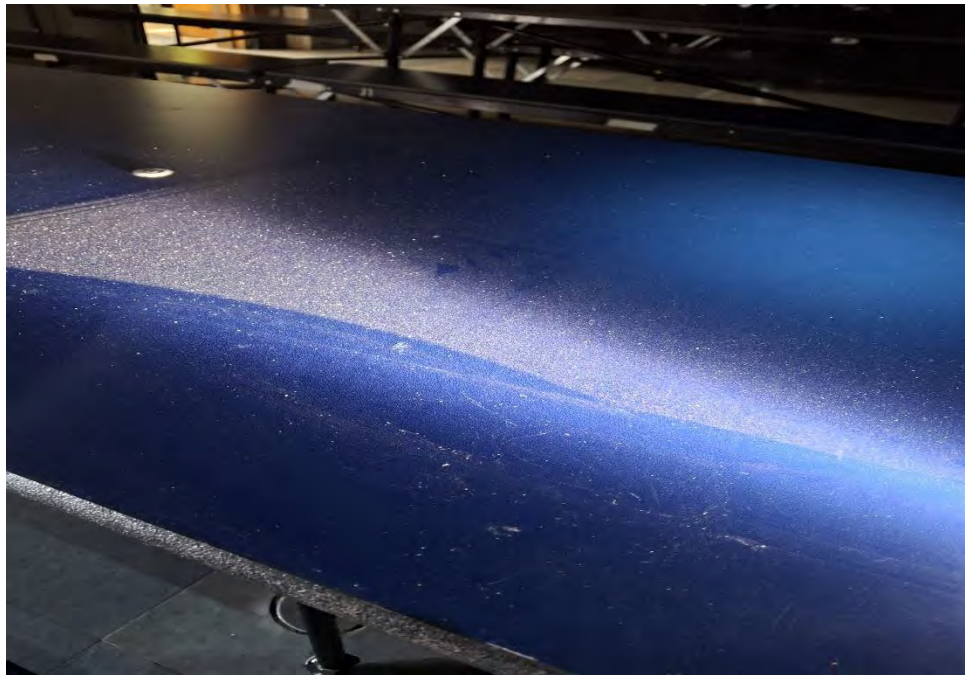


Photograph 12: View of low shelves in Building B. Visible smoke/fire debris.

FIGURE B-6



Photograph 13: View of the floors in Building C. Visible smoke/fire debris.



Photograph 14: View of Building D tables. Visible smoke/fire debris.

FIGURE B-7



Photograph 15: View of Building D out of order restrooms. Visible open window, and smoke/fire debris

FIGURE B-8

APPENDIX C

Inspection Spreadsheets

Post Clean-up Inspection Observation Sheet: Topanga Charter Elementary School

Building No.	Room/Classroom	Dust Levels		PID Reading (ppm)	Areas of Concern
		Low	Moderate		
AA4088	CLASSROOM 21		X	0.0	FLOOR
AA4088	CLASSROOM 22	X		0.0	PASSES VISUAL INSPECTION
AA4087	CLASSROOM 20	X		0.0	PASSES VISUAL INSPECTION
AA4087	CLASSROOM 19		X	0.0	FLOOR
DSA20224	CLASSROOM 18	X		0.0	PASSES VISUAL INSPECTION
DSA20224	CLASSROOM 17	X		0.0	PASSES VISUAL INSPECTION
DCH20223	CLASSROOM 16		X	0.0	XYLOPHONE/WINDOW SILLS/BLINDS/CABINET
DCH20223	CLASSROOM 15		X	0.0	WINDOW SILLS/BLINDS/SHELVE
45353	GIRLS BATH	X		0.0	PASSES VISUAL INSPECTION
45353	ALL GENDER BATH		X	0.0	CABINET
45353	BOYS BATH		X	0.0	NEEDS GENERAL CLEANING THROUGHOUT, FIREFIGHTERS USING THIS BATH
OUTSIDE	PLAYGROUND	X		0.0	PASSES VISUAL INSPECTION
23155	CLERICAL OFFICE	X		0.0	PASSES VISUAL INSPECTION
23155	ADJACENT OFFICE		X	0.0	WINDOW SILLS/BLINDS
23155	NURSE OFFICE		X	0.0	FLOOR
23155	NURSE BATH	X		0.0	PASSES VISUAL INSPECTION
23155	FACULTY BATH	X		0.0	PASSES VISUAL INSPECTION
23155	CLASSROOM K		X	0.0	WINDOW SILLS/BLINDS
23155	CLASS K GIRLS BATH	X		0.0	PASSES VISUAL INSPECTION
23155	CLASS K BOYS BATH		X	0.0	FLOOR
A	BOYS BATH		X	0.0	WINDOW SILLS/FLOOR
A	GIRLS BATH		X	0.0	WINDOW SILLS/FLOOR
A	ALL GENDER BATH		X	0.0	WINDOW SILLS/FLOOR
A	CLASSROOM 1		X	0.0	WINDOW SILLS/FLOOR
A	CLASSROOM 2	X		0.0	PASSES VISUAL INSPECTION
A	CLASSROOM 3		X	0.0	WINDOW SILLS/BLINDS/CONDUIT COVER
A	CLASSROOM 4		X	0.0	WINDOW SILLS/BLINDS/CONDUIT COVER/WHITEBOARD TRAY
A	ROOM 5 (LIBRARY)		X	0.0	WINDOW SILLS/BLINDS/SHELVES
B	GIRLS BATH	X		0.0	PASSES VISUAL INSPECTION
B	BOYS BATH		X	0.0	FLOOR
B	CLASSROOM 6		X	0.0	WHITEBOARD TRAY/WINDOW SILLS/BLINDS/SHELVE
B	CLASSROOM 7		X	0.0	WHITEBOARD TRAY/WINDOW SILLS/BLINDS/FLOOR
B	CLASSROOM 8		X	0.0	WINDOW SILLS/BLINDS/CONDUIT COVER
B	CLASSROOM 9		X	0.0	CONDUIT COVER
B	CLASSROOM 10		X	0.0	FLOORS/LOWER WALLS
B	ALL GENDER BATH	X		0.0	PASSES VISUAL INSPECTION
C	CLASSROOM 11	X		0.0	PASSES VISUAL INSPECTION
C	CLASSROOM 12		X	0.0	WINDOW SILLS/BLINDS
C	CLASSROOM 14		X	0.0	WINDOW SILLS/BLINDS/FLOOR
C	GIRLS BATH	X		0.0	PASSES VISUAL INSPECTION
C	BOYS BATH		X	0.0	FLOOR/WINDOW SILLS
C	FACULTY BATH		X	0.0	FLOOR/WINDOW SILLS
C	PLANT MGR OFFICE		X	0.0	FLOOR
D	CAFETERIA		X	0.0	TABLES/PIANO/FLOOR/STAGE
D	KITCHEN		X	0.0	FLOOR
D	REFRIDGERATION AREA	X		0.0	PASSES VISUAL INSPECTION
D	BOYS/GIRLS BATHS		X	0.0	(OUT OF ORDER) FLOOR/SINKS/HORIZONTAL SURFACES

Notes:

No. - number
 PID - photo ionization detector (calibrated to hexane gas 100ppm)
 ppm - parts per million



475 Goddard, Suite 200 | Irvine, California 92618 | p. 949.753.7070

ARIZONA | CALIFORNIA | COLORADO | NEVADA | TEXAS | UTAH

ninyoandmoore.com

Ninyo & Moore
Geotechnical & Environmental Sciences Consultants