

Limited Wildfire Smoke Impact Assessment
Lanai Road Elementary School
4241 Lanai Road
Encino, California 91436

Los Angeles Unified School District
333 S. Beaudry Avenue, 21st Floor | Los Angeles California 90017

January 23, 2025 | Project No. 211936035



Geotechnical | Environmental | Construction Inspection & Testing | Forensic Engineering & Expert Witness

Geophysics | Engineering Geology | Laboratory Testing | Industrial Hygiene | Occupational Safety | Air Quality | GIS

Ninyo & Moore
Geotechnical & Environmental Sciences Consultants

Limited Wildfire Smoke Impact Assessment
Lanai Road Elementary School
4241 Lanai Road, Encino, California 93010

Mr. Filmon Tesfaslasie
Los Angeles Unified School District,
Office of Environmental Health & Safety
333 South Beaudry Avenue, 21st Floor | Los Angeles, CA 90017

January 23, 2025 | Project No. 211936035

A handwritten signature in blue ink, appearing to read "David Kelly", with a long horizontal line extending to the right.

David Kelly, CAC, CRIE, LRC
Senior Project Environmental Scientist

A handwritten signature in blue ink, appearing to read "Stephen J. Waide", with a long horizontal line extending to the right.

Stephen J. Waide, CIH, CSP, CIEC, CMC
Principal Industrial Hygienist

A handwritten signature in blue ink, appearing to read "Anthony Lizzi", with a long horizontal line extending to the right.

Anthony Lizzi, PG, CHG
Principal Geologist

DMK/SJW/AJL/lva

CONTENTS

1	INTRODUCTION	1
2	BACKGROUND	1
3	SITE DESCRIPTION AND BACKGROUND	1
4	OBSERVATIONS AT LANAI ROAD ELEMENTARY SCHOOL	2
5	CONCLUSIONS AND RECOMMENDATIONS	2
6	LIMITATIONS	3

FIGURES

Figure 1 – Lanai Road Elementary School and Location of Palisades Fire

Figure 2 – Lanai Road Elementary School Showing the Areas Inspected

APPENDICES

A – Certified Industrial Hygienist Documentation

B – Photographs

C – Inspection Spreadsheets

1 INTRODUCTION

This report contains findings, conclusions, and recommendations relevant to the limited wildfire smoke impact assessment conducted at Lanai Road Elementary School located at 4241 Lanai Road, in Encino, California (subject school). Figure 1 shows the general location of the school site as well as an outline of the Palisades Fire limits. Ninyo & Moore's Certified Industrial Hygienist (CIH) Mr. Stephen Waide, assigned representative, Mr. Ivan Ortega, a Ninyo & Moore Industrial Hygienist, to conduct the assessment on January 19, 2025.

The assignment was made at the request of Mr. Anthony Espinoza of Los Angeles Unified School District (LAUSD), Office of Environmental Health & Safety (OEHS) on January 17, 2025, in response to potential impact to the subject school from smoke related to the Palisades Wildfire. A copy of Stephen Waide's CIH certification is included in Appendix A.

Our scope of services was limited to performing a visual inspection of the interior and exterior areas of the school; documenting our observations with field notes and photographs; being prepared to collect representative suspect samples of soot, char, and ash from selected surfaces, if necessary; and preparation of this report.

2 BACKGROUND

Ninyo & Moore understands that the Palisades Fire, which continues to burn at the time of this writing, has so far burned more than 24,000 acres in Los Angeles County, California. (<https://recovery.lacounty.gov/palisades-fire/>). Lanai Road Elementary School is affected by smoke and debris. Lanai Road Elementary School is located approximately 5 miles from the fire. Ninyo & Moore understands that minimal cleaning was accomplished by LAUSD plant managers at the school prior to our evaluation. OEHS provided site maps and associated school building names for each site to facilitate Ninyo & Moore's site visit.

3 SITE DESCRIPTION AND BACKGROUND

Ninyo & Moore's CIH representatives visually inspected the exterior common areas and grounds and interior classrooms. Our assessments focused on looking for discoloration, dust films/residues or debris on surfaces that could potentially be attributed to wildfire smoke deposition. The presence or absence of such discoloration or debris was documented as well as photographed on site.

LAUSD representatives and Ninyo & Moore Industrial Hygienists determined on-site that testing for the presence of the combustion constituents' soot, char, and ash would not be necessary at

the school site as visual inspections were successful at determining where further cleaning should be performed.

4 OBSERVATIONS AT LANAI ROAD ELEMENTARY SCHOOL

On Sunday, January 19, 2025, Lanai Road Elementary School (Lanai ES) was inspected. Prior to conducting the inspection, Ninyo & Moore personnel donned proper PPE including N95 facepiece respirators. In general, visual observations of the interior surfaces of the classrooms and other occupied areas indicated very little visible dust deposition on horizontal surfaces with suspected combustion constituents or other minor fire-related debris noted only on a limited number of desktops and a cafeteria serving counter and salad bar. Minor debris was noted outdoors only on a drinking fountain and food drop-off shelves and benches. Cleaning was accomplished by the School Plant Manager, at our direction during the assessment.

Odors related to the wildfire were not noted in indoor areas. Because a multitude of structures were destroyed during this fire, a calibrated Mini RAE® photo-ionization detector (PID) was utilized on site as a field screening tool to help identify whether measurable levels of gases or organic vapors were present in occupied areas. Organic vapors were not detected when using a PID. Figure 2 depicts the Lanai ES showing the areas inspected. Photographs of the site are provided in Appendix B. Specific classrooms and other interior areas are identified in Appendix C with notes provided for each inspected area.

5 CONCLUSIONS AND RECOMMENDATIONS

No standards or exposure limits exist specifically for carbonaceous material or combustion product settled on surfaces. In assessments such as this one, visible evidence of soot, char, and ash are sought out and cleaned where identified. When settled dust is identified that may or may not be a result of wildfire smoke, samples are sometimes collected to evaluate the relative percentages of combustion products in the settled dust. The presence of microscopic particles whose presence or absence cannot be detected by normal observation, and have no confirmable effect (such as staining, corrosion, or increased health risk), would not be expected to constitute a significant impact.

With this in mind, the mere presence of combustion products is not unusual nor does it necessarily constitute impact to indicate the need for special cleaning beyond everyday housekeeping or maintenance. Charred plant tissue or ash would not constitute a specific health hazard (any more than any other number of particles). In many cases where the impact is not readily apparent, simple surface cleaning is all that is required.

According to our visual observation, the areas identified as needing additional cleaning at the Lanai ES site were adequately cleaned while we were on-site and no further action is recommended at this location.

Finally, Ninyo & Moore does not believe that the special controls, PPE and training used by professional remediators is necessary for the cleaning of surfaces with combustion products present in amounts noted during our assessments. If suspected combustion constituents are identified in hidden areas at a later time, cleaning of these areas can be accomplished indoors by wet-wiping of these areas using normal household cleaning products and practices and outdoors with water washing. No other recommendations for further cleaning of the property are made.

6 LIMITATIONS

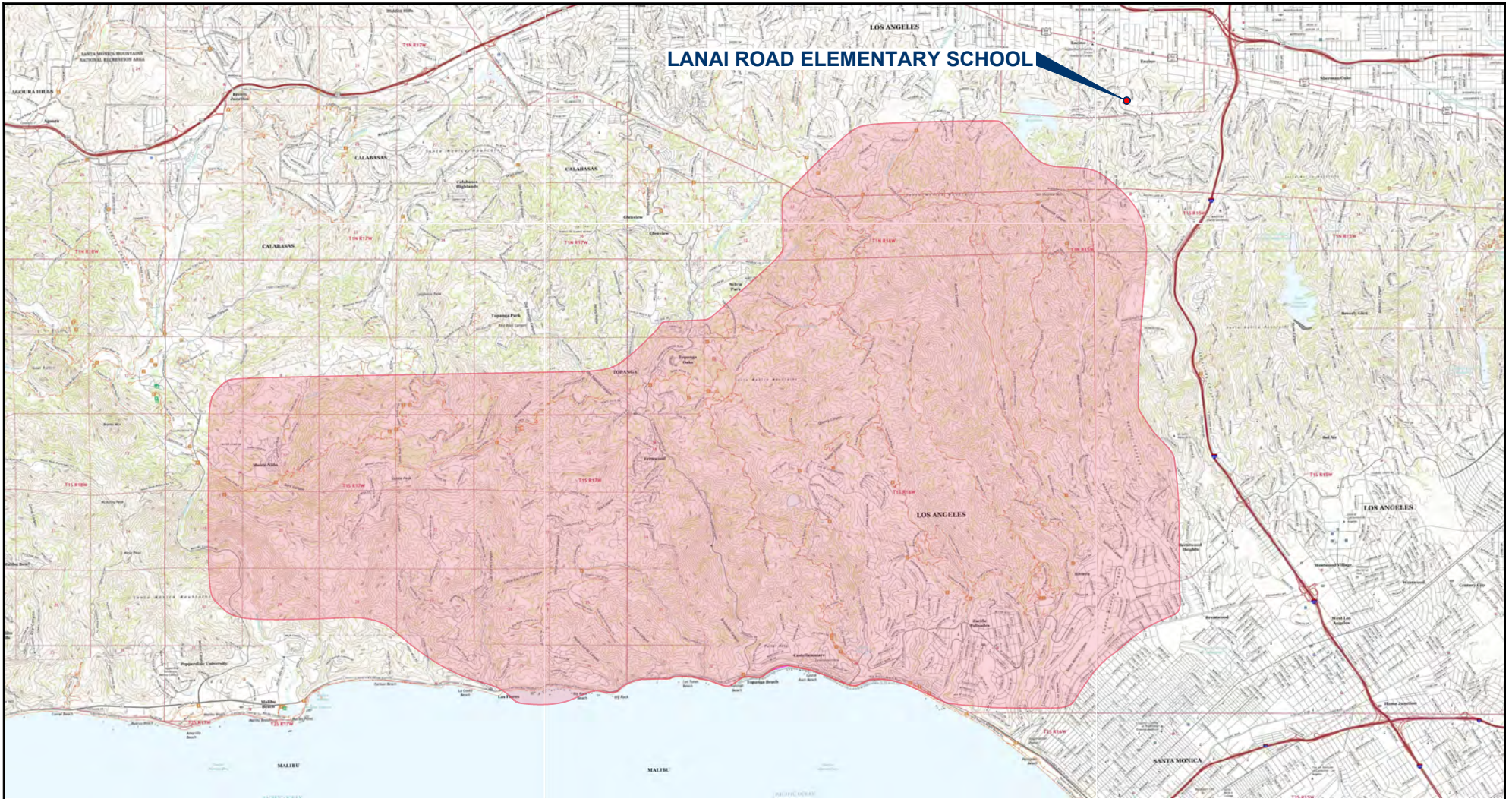
This report was based on the most current information available on the contaminants of concern, and recommendations of common industry practice in remediation of wildfire smoke residue. Ninyo & Moore has performed the assessment set forth above in a thorough and professional manner consistent with industry guidelines and under supervision of a certified professional. Ninyo & Moore cannot guarantee and does not warrant that this limited assessment has revealed all adverse environmental conditions affecting the site. Nor can Ninyo & Moore warrant that the assessment requested would satisfy the dictates of, or provide a legal defense in connection with, environmental laws or regulations.

The results reported and any opinions reached by Ninyo & Moore are for the benefit of the client. Our conclusions, recommendations, and opinions are based on an analysis of the observed site conditions. It should be understood that changes to the applicable laws, regulations, codes, and standards of practice may occur due to government action or the broadening of knowledge



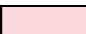
FIGURES

211936035.dwg_SL-L_01/23/2025_JDP



LANAI ROAD ELEMENTARY SCHOOL

LEGEND

 EXTENT OF PALISADES FIRE

NOTE: DIMENSIONS, DIRECTIONS AND LOCATIONS ARE APPROXIMATE. | REFERENCE: USGS, 2022.

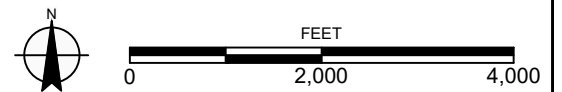
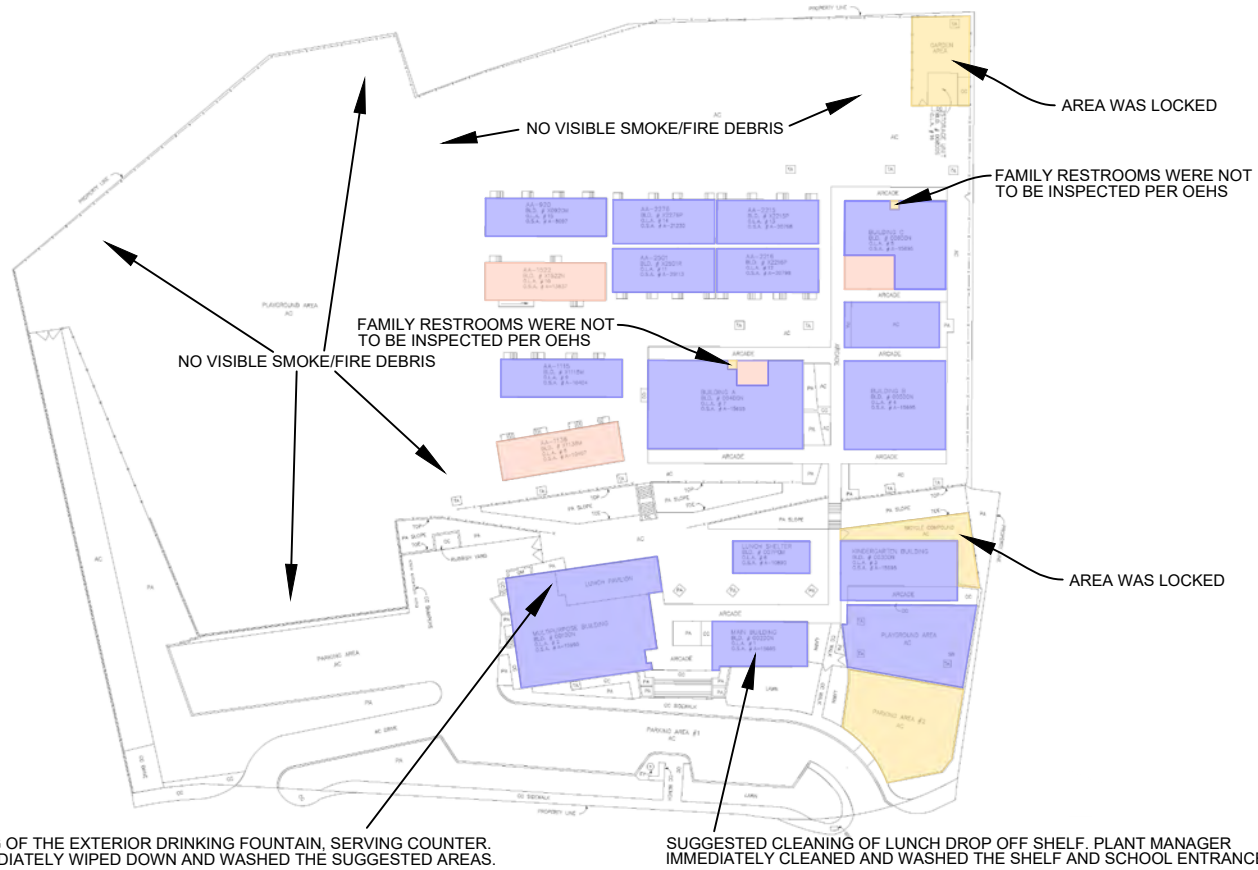


FIGURE 1

LANAI ROAD ELEMENTARY SCHOOL AND LOCATION OF PALISADES FIRE

Ninyo & Moore
 Geotechnical & Environmental Sciences Consultants

LANAI ROAD ELEMENTARY SCHOOL
 4241 LANAI ROAD
 ENCINO, CALIFORNIA
 211936035 | 1/25



LEGEND

	CLEANING COMPLETED
	NO VISIBLE SMOKE/FIRE DEBRIS
	AREAS NOT ASSESSED

NOTE: DIMENSIONS, DIRECTIONS AND LOCATIONS ARE APPROXIMATE. | REFERENCE: LOS ANGELES UNIFIED SCHOOL DISTRICT, 2001.

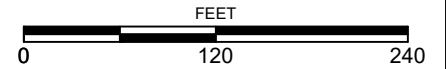


FIGURE 2

LANAI ROAD ELEMENTARY SCHOOL SHOWING THE AREAS INSPECTED

APPENDIX A

Certified Industrial Hygienist Documentation

The Board for Global EHS Credentialing (BGC)

through its vested authority, hereby confirms that

Stephen J. Waide

has met all requirements of education, experience, and examination, and on-going maintenance set forth through the BGC's American Board of Industrial Hygiene® (ABIH®) credentialing division for re-certification in the Comprehensive Practice of Industrial Hygiene and is thereby conferred the credential of

Certified Industrial Hygienist® (CIH®)

The aforementioned individual is given all rights, privileges, and responsibilities as both a diplomate of the BGC and holder of the CIH credential, provided that the credential is not suspended or revoked, and it is renewed annually. Moreover, the holder must meet all recertification requirements, including the obligation to practice ethically as prescribed by the BGC.



Credential Number: 7005 CP
Award Date: December 4, 1995
Expiration Date: June 1, 2027

Alan Leibowitz, CIH, CSP, FAIHA
Chair of the Board of Directors



Ulric K. Chung, MCS, PhD
Chief Executive Officer and Secretary



BOARD FOR GLOBAL EHS CREDENTIALING

6005 W. Saint Joe Hwy., Suite 300 Lansing, Michigan 48917-4876 **P:** (517) 321-2638 **F:** (517) 321-4624 **E:** info@EHSCredentialing.org

December 1, 2021

Stephen J. Waide, CIH
Ninyo & Moore
5710 Ruffin Road
San Diego CA 92123

Dear Stephen J. Waide,

I am pleased to inform you that your Certification Maintenance (CM) worksheet has been reviewed and your professional activities have fulfilled the Board's requirements for recertification. Your new certificate is enclosed.

Your next 60-month CM cycle will be from 1/1/2022 to 12/31/2026. Remember that you can earn CM credit only between your CM Cycle Start Date and End Date.

Key changes during your next CM cycle will be announced via email, which makes having your current email address very important. You can review your contact information, key CM cycle dates and begin entering your activities for your next CM cycle by logging into the *CAPS* system on the ABIH web site (we will no longer be accepting a cm worksheet via excel or paper).

The Board appreciates your continued professional service and support of its programs.

Sincerely,

Pamela J. Trim
Certification Director
517-853-5763
certificationdirector@gobgc.org



ANSI Accredited Program
PERSONNEL CERTIFICATION



International Occupational
Hygiene Association
Recognized Certification Board



APPENDIX B

Photographs



Photograph 1: View of the LAUSD Lanai Elementary School.



Photograph 2: View of the lunch pavilion. Tables have been cleaned with LAUSD approved cleaning agent. No visible smoke/fire debris.

FIGURE D-1



Photograph 3: Close up view of photograph 2.

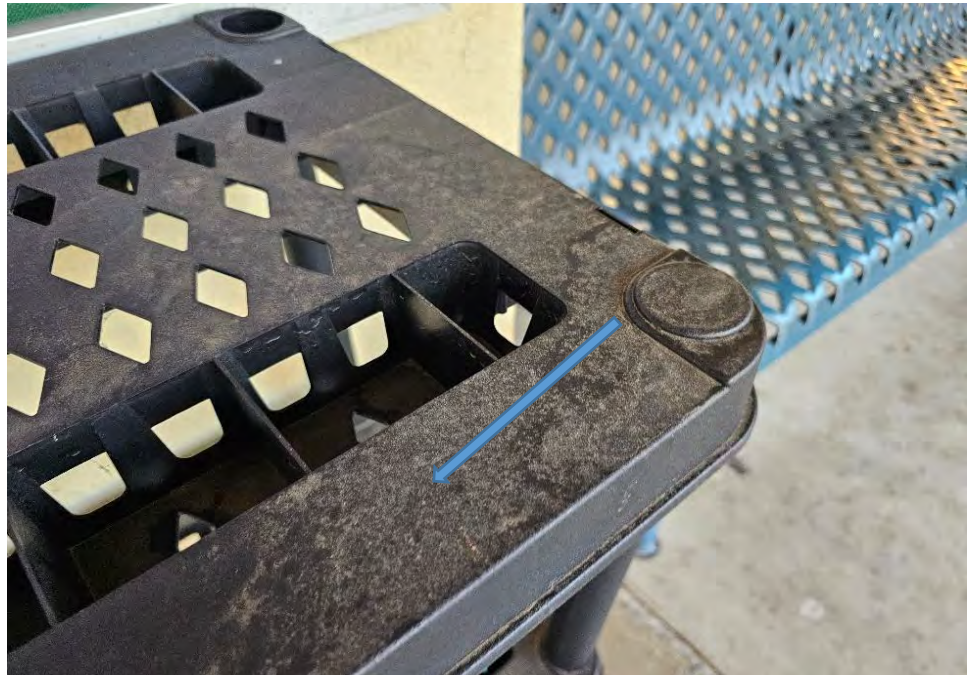


Photograph 4: View of the multipurpose room. No visible smoke/fire debris.

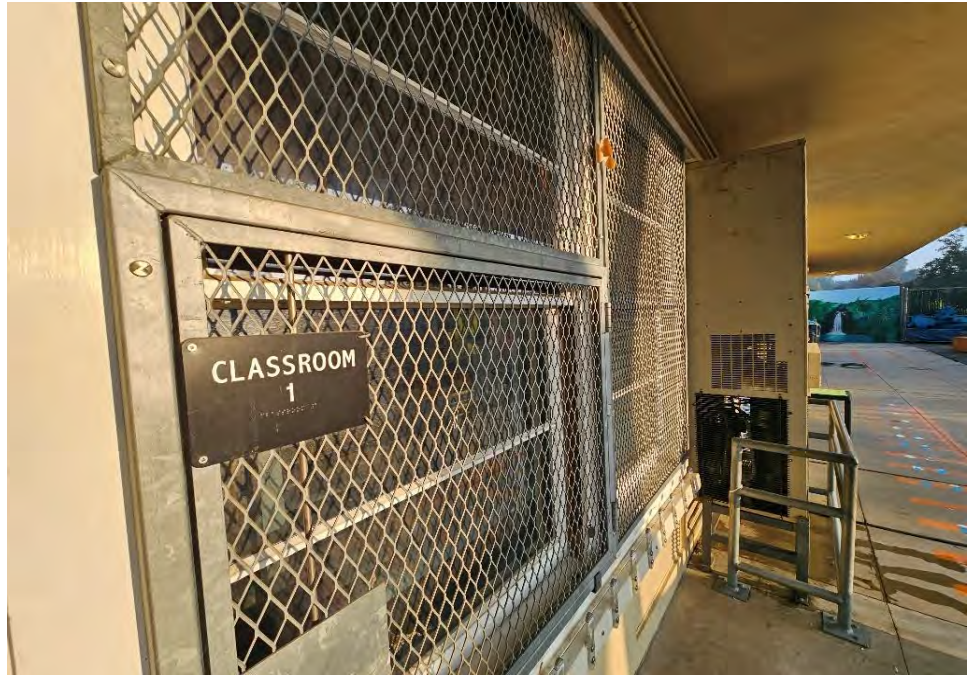
FIGURE D-2



Photograph 5: View of the main office student lunch drop off shelf. Visible smoke/fire debris.



Photograph 6: Close up view of photograph 5.



Photograph 7: View of Kindergarten building Classroom 1.



Photograph 8: Interior view of Kindergarten Building classroom 1. No smoke/fire debris observed.

FIGURE D-4



Photograph 9: View of the lunch shelter.



Photograph 10: Close up view of photograph 9. No smoke/fire debris observed.

FIGURE D-5



Photograph 11: View of Building C classroom 21.



Photograph 12: View of Building C classroom 21 window sill. No smoke/fire debris observed.

FIGURE D-6



Photograph 13: Close up view of Building C classroom 21 student desk. No smoke/fire debris observed.



Photograph 14: View of Building C Boy's restroom sinks. No smoke/fire debris observed.

FIGURE D-7



Photograph 15: View of Building C Boy's restroom urinals. No smoke/fire debris observed.

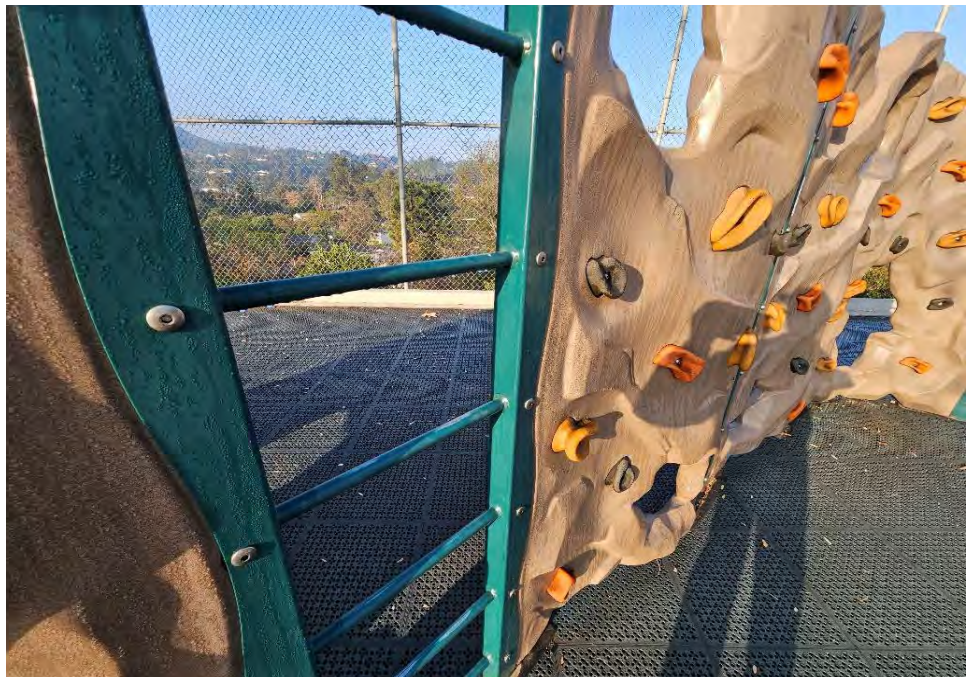


Photograph 16: View school playground. No smoke/fire debris observed.

FIGURE D-8



Photograph 17: Continuation of photograph 16.



Photograph 18: View children's climbing wall. No smoke/fire debris observed.

FIGURE D-9



Photograph 19: View of Building AA-1138 Classroom 4.



Photograph 20: View of Building AA-1138 Classroom 3 and 4 smoke/fire debris observed on the desks.

FIGURE D-10

APPENDIX C

Inspection Spreadsheets

Post Clean-up Inspection Observation Sheet: Lanai Road Elementary School

Building No.	Room/Classroom	Dust Levels		PID Reading (ppm)	Areas of Concern
		Low	None		
MPR	CAFETERIA	X		0.0	EXTERIOR DRINKING FOUNTAIN, SERVING COUNTER, SALAD BAR
MPR	INDOOR EATING AREA		X	0.0	PASSES VISUAL INSPECTION
MPR	LUNCH PAVILLION		X	0.0	PASSES VISUAL INSPECTION
MPR	LUNCH SHELTER		X	0.0	PASSES VISUAL INSPECTION
Main	ADMIN OFFICE		X	0.0	PASSES VISUAL INSPECTION
MAIN	ENTRANCE	X		0.0	EXTERIOR FOOD DROP OFF SHELVES AND BENCHES
MAIN	NURSE OFFICE		X	0.0	PASSES VISUAL INSPECTION
MAIN	EXTERIOR	X		0.0	LOST AND FOUND ITEMS WERE DISPOSED
KINDERGARTEN	CLASSROOM 1		X	0.0	PASSES VISUAL INSPECTION
KINDERGARTEN	CLASSROOM 2		X	0.0	PASSES VISUAL INSPECTION
KINDERGARTEN	PLAYGROUND		X	0.0	PASSES VISUAL INSPECTION, CLEANING DUE TO TREE DEBRIS
BUILDING B	LIBRARY		X	0.0	PASSES VISUAL INSPECTION
AC	CLASSROOM 12		X	0.0	PASSES VISUAL INSPECTION
AC	CLASSROOM 13		X	0.0	PASSES VISUAL INSPECTION
BUILDING C	CLASSROOM 21		X	0.0	PASSES VISUAL INSPECTION
BUILDING C	CLASSROOM 20	X		0.0	DESKS
BUILDING C	BOYS & GIRLS RESTROOMS		X	0.0	PASSES VISUAL INSPECTION
BUILDING C	CLASSROOM 28		X	0.0	PASSES VISUAL INSPECTION
PLAYGROUND	EQUIPMENT		X	0.0	PASSES VISUAL INSPECTION
AA-920	CLASSROOMS 22&23		X	0.0	PASSES VISUAL INSPECTION
AA-2276	CLASSROOMS 25 & 24		X	0.0	PASSES VISUAL INSPECTION
AA-2215	CLASSROOMS 26&27		X	0.0	PASSES VISUAL INSPECTION
AA-2216	CLASSROOMS 19&18		X	0.0	PASSES VISUAL INSPECTION
AA-2501	CLASSROOMS 17&16		X	0.0	PASSES VISUAL INSPECTION
AA-1522	CLASSROOMS 15&14	X		0.0	DESKS
AA-1115	CLASSROOMS 9&10		X	0.0	PASSES VISUAL INSPECTION
BUILDING A	ROOM 8, Z, 11		X	0.0	PASSES VISUAL INSPECTION
BUILDING A	BOYS&GIRLS RESTROOMS		X	0.0	PASSES VISUAL INSPECTION
BUILDING A	ROOM 11 & 5 & 6		X	0.0	PASSES VISUAL INSPECTION
BUILDING A	CLASSROOM 7	X		0.0	DESKS
AA-1138	CLASSROOMS 4 & 3	X		0.0	DESKS
PLAYGROUND	CLIMBING WALL		X	0.0	PASSES VISUAL INSPECTION
PLAYGROUND	ASPHALT AREA		X	0.0	PASSES VISUAL INSPECTION
PLAYGROUND	BASKETBALL COURTS		X	0.0	PASSES VISUAL INSPECTION
PLAYGROUND	WOODEN SHADE SHELTER		X	0.0	PASSES VISUAL INSPECTION
SITE	ARCADE 1-5		X	0.0	PASSES VISUAL INSPECTION

Notes:

No. - number
 PID - photo ionization detector (calibrated to hexane gas 100ppm)
 ppm - parts per million



475 Goddard, Suite 200 | Irvine, California 92618 | p. 949.753.7070

ARIZONA | CALIFORNIA | COLORADO | NEVADA | TEXAS | UTAH

ninyoandmoore.com

Ninyo & Moore
Geotechnical & Environmental Sciences Consultants