



**LAUSD**  
UNIFIED

# Children and Families in Early Education Committee Meeting

Facilities Update  
**October 17, 2024**





# Today's Presentation



- State's Facilities Requirements for Early Education Spaces
- Existing EEC Facilities
- Universal Transitional Kindergarten Space Needs
- Infant Center Facilities Requirements





# Overview of State Regulations



Title 22, Division 12 of the CA Code of Regulations (“Title 22”) outlines the minimum licensing requirements for early childhood programs with a focus on health & safety regulations for facilities. State subsidized childcare centers must also meet CA Education Code requirements (“Title 5”) which sets stricter adult/child ratios.

## **Site Requirements**

- Separated from adjacent site & visually protected from outside.
- Trash bin area must be provided.

## **Outdoor Facility Requirements**

- At least 75 square feet per child of outdoor activity space.
- Play area must be fenced.
- Areas around & under play equipment are to have safe surface materials.



Monte Vista EEC



# Overview of State Regulations



## Indoor Facility Requirements

- Minimum 35 square feet of indoor activity space per child.
- Provide opportunities for different activities, interaction, and resting.
- Locate indoor activity areas directly adjacent to the outdoor play area, toilet, and storage.
- Provide storage space for clothing, bedding, and personal belongings.
- Provide 1 toilet and 1 sink for every 15 children or fraction thereof.



Kentwood EEC



# Overview of State Regulations



## **Indoor Facility Requirements**

- Provide isolation area for ill children with 1 sink, 1 toilet, and couch or cot.
- Sinks with hot water with controls to automatically regulate water temperature between 105–120 degrees.
- Electrical outlets shall be “child proof” with safety features.
- Individual designated storage for children’s linens, bedding, and personal belongings.
- Indoor temperature to be 68 degrees minimum and 85 degrees maximum. In extreme heat areas, a maximum of 20 degrees less than outside temperature.
- Drinking water to be available both indoors and outdoors, bottled water is permitted.



Key differences between Early Education Centers and our Kindergarten Educational Specifications and Design Guide Requirements:

- Kindergarten size is 1,350 square feet including restrooms. (1,200 square feet for Kindergarten classroom is equivalent to 34 students per EEC requirements.)
- Kindergarten provides 1 toilet and 1 sink per classroom compared to 1 toilet and sink per 15 children. Classrooms may have shared toilets and sinks.



# Early Education Center (EEC) Facilities



- 87 EECs currently in operation
  - 10 are less than 20 years old
  - 5 are between 20 and 30 years old
  - 25 are between 45 and 49 years old
  - 34 are between 50 and 60 years old
  - 8 are between 61 and 70 years old
  - 5 are 75+ years old
- Existing EEC facilities reflect same conditions as LAUSD school facilities serving K-12 students. More than 60 percent of District school buildings are over 50 years old and in need of updates.
- Over the past 5 years, nearly \$125 million has been invested in early education facilities, and there is still more work to be done.





# EEC Outdoor Spaces



50 Board-Approved projects ~ \$160 million providing dynamic outdoor spaces with learning stations, including. music & movement, building, gardening, art & more.

- 20 completed
- 12 in construction
- 18 in pre-construction

Campus upgrades are included in many outdoor classroom projects to provide new HVAC, roofing, playground matting, fire alarm & ADA accessibility upgrades.

**October 22 BOE:** 2 new projects ~\$13 million





# Universal Transitional Kindergarten (UTK)



- Projects to provide new UTK facilities are designed and constructed to meet our Kindergarten specifications for classrooms.
  - Kindergarten size is 1,350 square feet including restrooms.
  - Kindergarten provides 1 toilet and 1 sink per classroom. Classrooms may have shared toilets and sinks.
  - Drinking fountains provided in outdoor play area
- Outdoor play yard requirements are similar to requirements for Kindergarten and are aligned with the *Green Schoolyards for All Plan*.



# Infant Center Care Program



- The indoor space requirement for infant care is 35 square feet per child and 75 square feet per child for outdoor space.
  - Equipped with appropriate furniture & equipment including, but not limited to, cribs, cots or mats; changing tables; and feeding chairs.
- We could have enough space to meet outdoor requirements, though there could be possible constraints by building square footage due to the 1:3 adult/child staffing ratio requirement.
- Should the infant center program be expanded, Facilities would establish a standard Educational Specification to guide the development of future projects.



# Infant Care Centers



- Sites with infant care programs:
  - Cleveland Infant Center
  - Locke Infant Center
  - Ramona Infant Center
  - Roosevelt Infant Center
- In October 2023, the Board approved the new Chatsworth EEC which will provide facilities for infant and toddler care programs.



Ramona Infant Center



# Infant Care Centers



Ramona Infant Center





# New Chatsworth Early Education Center

10117 Lurline Ave., Chatsworth, CA 91311



**Status:** In design

## **Project Scope:**

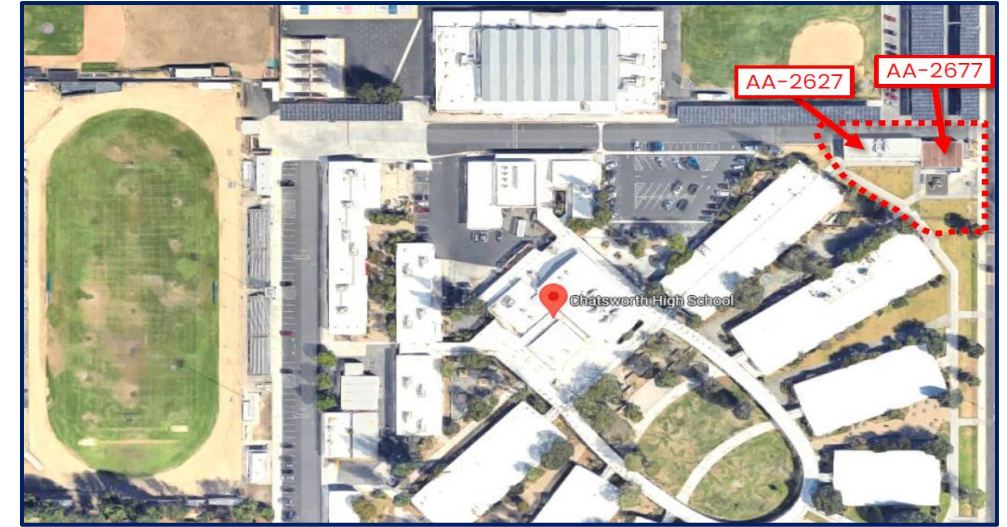
New 3,840 square foot EEC on Chatsworth CHS campus (affiliated charter). Replace two deteriorated classroom bungalows with two new modular buildings and enhance 10,880 square feet of outdoor space.

Estimated capacity for 33 infant and ~36 toddler students.

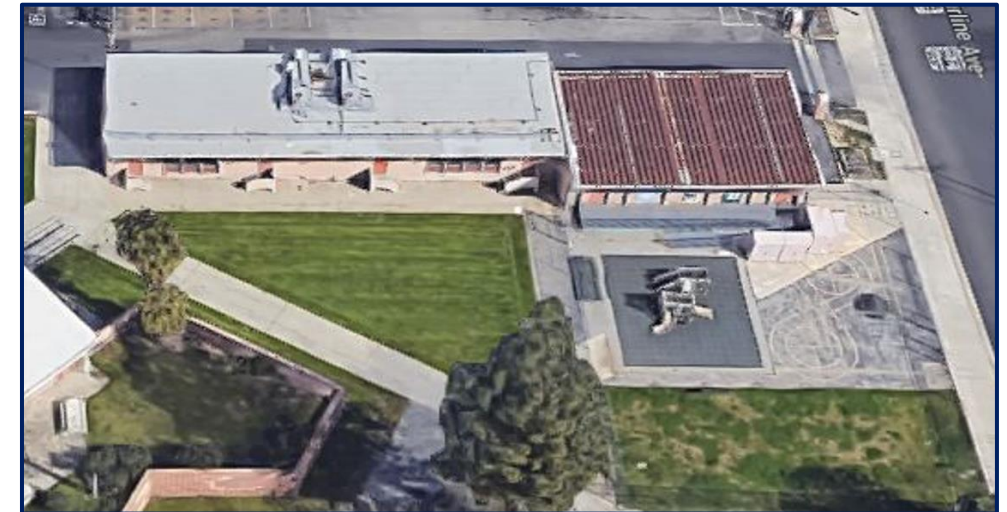
**Budget:** ~\$5.2 million

**Construction Start:** Q1 2026

**Project Completion:** Q1 2027



Project Location (Lurline Ave. & Mayall St.)



Deteriorated bungalows over 50 years old with rusted roofing and termite damage



**10117 Lurline Ave., Chatsworth, CA 91311**







**LAUSD**  
**UNIFIED**