



LAUSD
UNIFIED

Community-Based Safety Plan

Board of Education Meeting
May 7, 2024

Table of Contents

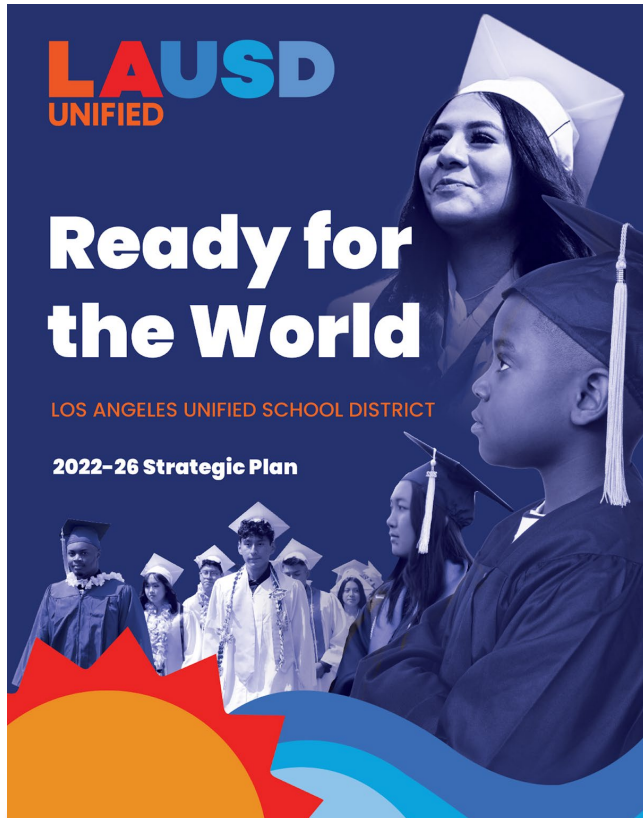
- Community Based Safety “In Action”
- Community Based Safety Analysis and Expansion Board Resolution- June 13, 2023
- Strategic Plan Alignment
- Every School Safe: A Blueprint for Safety Alignment
- Community Based Safety Definition
- Stakeholder Engagement & Feedback
- Community Based Safety
 - Current Commitments
 - Expansion & Supports
- Anticipated Outcomes





Community Based Safety Analysis and Expansion Board Resolution– June 13, 2023

- Commits to a holistic vision of school safety, including physical, emotional and intellectual safety focusing on:
 - Creating safe, welcoming, culturally- and racially-responsive school climates;
 - Centers the experiences and voices of students; and
 - Responds to on-campus incidents in constructive, non-criminalizing ways.
- Engage with government officials and departments to conduct a landscape analysis regarding community-based safety approaches including but not limited to partnering with:
 - BSAP Steering Committee
 - School Culture, Climate
 - Safety Task Force
 - Los Angeles County Department of Youth Development
 - Learn about and leverage pilot programs that focus on community-based responses to district, community and school safety needs
- Leverage pilot programs focused on community-based responses to District, community and school safety needs
- Present to the Board a progress report by January 2024
- Present a final comprehensive report to the Board by May 2024



2A

Welcoming Learning Environments

PILLAR 2
Joy and
Wellness

OUR PRIORITY

Design and sustain welcoming, **safe**, environmentally friendly, affirming, and inclusive learning environments.

WHY THIS MATTERS

Healthy and **safe** environments increase student capacity for learning and success.



Division of School Operations

Every School Safe: A Blueprint for Safety



Los Angeles Unified ensures the environmental, physical, psychological and social emotional safety and wellbeing of our students and employees to keep **Every School Safe.**

What is Community Based Safety?

Community-Based Safety (CBS) is an approach to enhancing and maintaining public safety that:

- actively involves the community;
- regards violence as a public health issue;
- sees criminalization and incarceration as ineffective and harmful; and
- seeks to strengthen communities through investments in public amenities, social services, and equity.

Who Makes Up the School Community?

School-Site Members

- **Students**
- **Employees**
- **Parents**
- **Volunteers**

Off-Site Members

- **Business Partners**
- **Faith Based Groups**
- **Community Organizations**
- **First Responders/Law Enforcement**
- **Law Enforcement**
- **External District Supports**

Strategic Community Engagement

Discussions held regarding:

- Restorative Practices/School-Wide Positive Behavior Interventions and Support
- Student Mental Health and Wellness
- Every School Safe: Student Presentations
- Community-Based Safety
- District Safety Personnel

Groups Engaged



Students



Parents and Families



LAUSD Employees



**Civic and
Business Leaders**



**Community
Organizations**

Student Feedback

Groups

- Superintendent's Student Advisory
- Student Safety Summit
- Board Member Student Advisory
- Leadership Empowerment Council
- School Culture, Climate and Safety Task Force

"Students should be included on the Positive Behavior Intervention and Support Committee."

"[LAUSD] needs to ensure that student voices are heard regularly."

"Parents need help becoming more familiar with school mental health resources."

"Students need to be included in conversations about Community Based Safety."

"We need more training for teachers on the resources available to students experiencing mental health concerns."

Parent Feedback

Groups

- Region Town Halls
- Parent Safety Convenings in Collaboration with Mayor's Office
- School Culture, Climate and Safety Task Force

"As parents we need to have support in understanding mental health so we can get over the stigma behind it and help youth."

"Creating a welcoming environment can make parents want to participate and be involved."

"More training for staff so they understand the needs and stories of our kids."

"Some students feel uncomfortable with officers on campus."

"We would feel our children are safe with LASPD inside and outside of the school campus."

Employee Feedback

Groups

- Region Town Halls for Employees
- Principal Advisory Groups
- Administrative Organizations
- School Culture, Climate and Safety Task Force

"Community-based programs cover a wide range of supervision."

"We are safe and I feel safer now."

"After tonight's Safety Town Hall, I now know there is a process to assist us."

"Students show mixed feelings toward the presence of school police."

"LASPD Officers have good relationships with students and parents which positively impact safety."

Administrator Organizations Feedback

Groups

- Elementary Principals
- Middle School Principals
- Senior High School Principals
- Senior High Options Principals
- Pilot School Principals
- Adult School Principals
- Special Education Principals
- Early Education Center Administrators

"Student mental health needs are different depending on their grade level."

"School-based safety positions contribute to student safety but not really staff safety."

"We need more community based safety programs and clarity on their role."

"The needs and challenges of each school is unique and should be taken into consideration."

"School mental health teams are working with heavy caseloads and need more support."

Additional Community Feedback

Groups

- Community Coalition
- Students Deserve
- Faith Based Leaders
- Business Leaders

"We listen to [adults] because we trust them."

"Students should not be handcuffed, arrested, or pepper sprayed. They should get services like counseling and take part in restorative practices "

"A trusted adult is someone who takes pride in the community and knows how to approach students."

"Peer counselors have the students' best interest in mind because they are students."

"We want to thank you for closing the police vacancies and we hope the \$3.7 million goes to services for our students ."

Strategic Community Engagement

Based on the engagements with parents and families, we heard that:

- Community-based safety programs can help promote safer school environments.
- They would like to see LASPD Officers more involved on-campus, working with other safety personnel to create safe and welcoming school environments.
- They are mostly satisfied with the availability of mental health support and resources at their children's schools.
- Their child's school balances the use of restorative practices and punitive consequences to address student behavior.

Based on the engagements with employees, we heard that:

- Community-based safety initiatives address the unique needs and concerns of diverse populations within the community.
- Their interactions with school police officers have been positive, and help create a safe environment around schools.
- They received sufficient training on student mental health and wellness and would recommend these resources to students.
- Restorative practices and behavior supports are effective in improving school climates and reducing disciplinary issues.

Strategic Community Engagement

Based on the engagements, students felt that:

- There wasn't much awareness of mental health resources and services available to them
- Safety means more than just a secure campus; it's about ensuring a safe journey there and back
- It shouldn't matter what school students attend, they need to feel safe
- Students experience a variety of stressors from inside and outside school at all hours



Strategic Community Engagement

Based on these engagement sessions, students expressed the:

- Need to make mental health resources and access to material more visible
- Need for ensuring safe passage to and from school
- Desire for more peer-to-peer support programs



Based on these engagement sessions, parents expressed:

- The need for increased awareness around mental health and well-being
- The desire to be more involved in safety-related decisions at schools
- Strong feelings that school police play a critical role in ensuring student safety



Based on these engagement sessions, staff expressed:

- The need to address the impact social media has on students
- Concerns about the role and effectiveness of current school safety measures
- Additional training around balancing restorative practices and discipline



Current Commitment to Community-Based Safety: District Safety Personnel

Item	Position/Item	Position at school site or Region/District	FTEs	Budgeted
1	CBSP Vendor-Provided Support	School Support Service	N/A	\$14,161,600
2	School Climate Advocates	School Site Based	338	\$31,952,381
3	Restorative Justice (RJ) Teacher Advisors	Region/District	2	\$312,712
4	System of Support Advisors (SOSA)	Region/District	51	\$8,748,515
5	Campus Aides/Supervision Aides	School Site Based	1,901	\$94,070,638
6	Psychiatric Social Workers (PSW)	School Site Based	751	\$120,352,057
7	School Police	Region/District	342	\$52,771,604
8	Operations Coordinators	Region/District	29	\$6,751,415
9	Mental Health Coordinators	Region/District	7	\$1,562,332
10	Organizational Facilitator	Region/District	30	\$5,412,525
11	Healthy Start Coordinator	School Site Based	16	\$1,924,608
12	RJ Teachers	School Site Based	120	\$16,397,297
		Total	3,587	\$354,417,684

Current District Commitment to Community-Based Safety- CBSP

CBSP Budget (Program 13363)

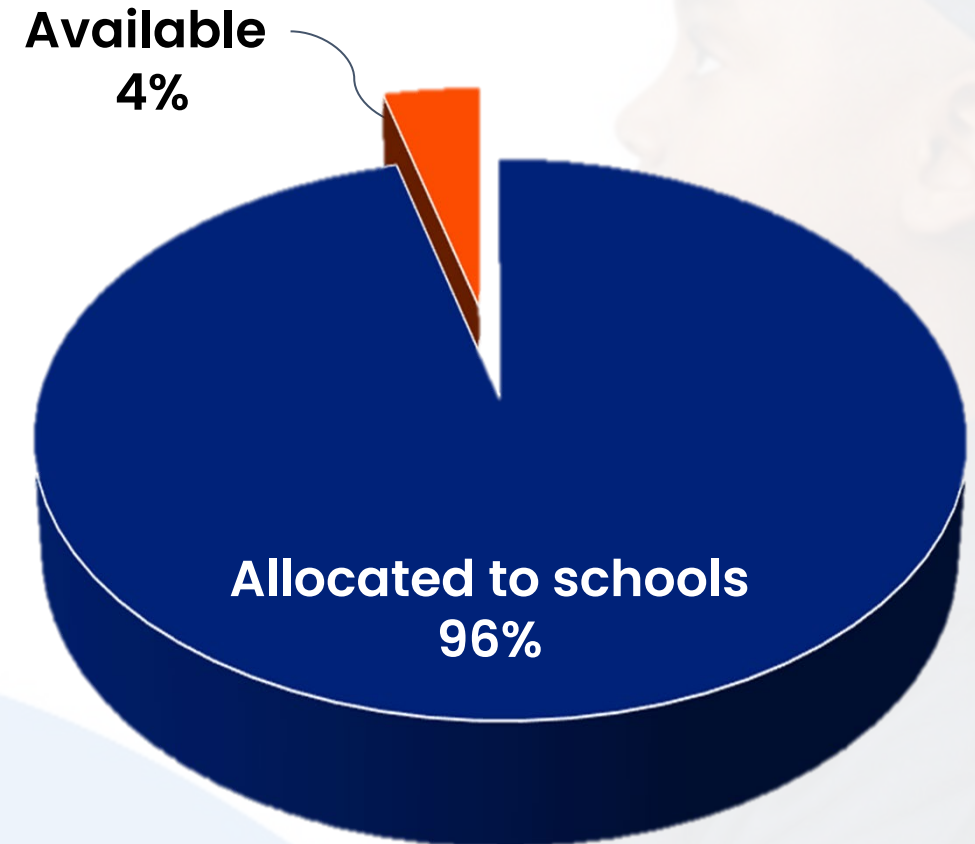
Total Budget	\$14,161,600
Amount Allocated to schools	\$13,556,139
Amount Available	\$605,461

# of Schools with funding allocation	83
# of Active CBSP Programs	113
# of Active Safe Passage Programs at Schools	41
# of Active Community Development/Peace Building Programs at Schools	72

Additional commitment of one time funds

Total Budget	\$3.7 million
--------------	---------------

CBSP Budget



Safe Passage Programs

Provided at 43 BSAP Schools

Strong Shoulders

107th St ES	Figueroa ES	Obama MS
42 nd St ES	Foshay LC	Manual Arts HS
Dorsey HS	Hawkins HS	Muir MS
Fairfax HS	Jefferson HS	Purche ES

Boys 2 Gentlemen

109th St. ES	95 th St. ES
116th St. ES	Flournoy ES
59th St. ES	LA Academy MS
92nd St. ES	South Park ES
	Venice HS

P.E.A.C.E.

Annalee ES	Gardena HS
Barrett ES	Knox ES
Bethune MS	Mann UCLA
Bradley Mag	Paseo del Rey ES

B.A.B.Y.

Cochran MS	Manchester ES
Hamilton HS	Peary MS
	WESM

We Care Outreach Ministries

Griffith-Joyner ES	
Jordan HS	Markham MS

City Lights Gateway Foundation

Crenshaw HS	Manual Arts HS	Narbonne HS
-------------	----------------	-------------

Chapter Two Inc.

Dymally HS	Fremont HS	Maya Angelou HS
------------	------------	-----------------

Peace Building and Community Building Programs

Schools with active Peace Building and /or Community Building Programs:

Annalee EL*	Dana MS	Hawkins HS	Mann UCLA*	Paseo Del Rey EL
Audubon MS*	Dorsey HS*	Hillcrest Dr EL	Manual Arts HS*	Peary MS
Baldwin Hills EL	Drew MS	Irving MS	Marina Del Rey MS	Purche EL*
Barrett EL	Dymally HS*	Jefferson HS	Markham MS	Raymond Ave EL*
Bethune MS*	Fairfax HS	Jordan HS*	Maya Angelou HS	South Park EL*
Bradley Mag*	Figueroa EL	King MS*	McKinley EL	Venice HS*
Carson HS	Flournoy EL	Knox EL*	Middle College HS	Washington Prep HS
Cimarron EL	Foshay LC*	LA Academy MS	Muir MS*	WESM
Cochran MS*	Fremont HS*	Loyola Village EL	Narbonne HS*	West Athens EL*
Cowan EL	Gardena HS	Madison MS	Normandie EL	Yes Academy
Crenshaw STEMM	Griffith Joyner EL	Manchester EL*	Obama Global Prep	
Crescent Hts *	Hamilton HS	Manhattan Place EL	Open Charter	

* denotes schools with more than 1 program

BSAP Vendor Bench approved April 18, 2023

- 21 vendors were selected
- 6 of 21 are Safe Passage

Ongoing communication with vendors & schools via Region Operations

Expansion & Support

BSAP Vendor Refresh published January 8, 2024 (RFP released to public)

- Vendor outreach supports
 - January 16 hosted at Board District 1 Office
 - January 25 hosted via zoom (RFP Pre-Proposal meeting)
- Bench Refresh pending approval and under a cone of silence

Safe Passage Monitoring Plan

- Region Operations Coordinator - monthly check ins with schools
- DSO regular meeting with providers
- DSO regular meetings with schools and providers

Current District Commitment to Community Based Safety– Partnerships

- Partnerships with City and County
 - P.F. Bresee Foundation –
 - Gang Reduction Youth Development (G.R.Y.D.) and Mental health supporting:
 - RFK Ambassador SGE
 - Virgil Middle School
 - Leo Politi ES
- Establish G.R.Y.D. Districtwide
- Ongoing Partnership with City for crossing guards & other traffic supports



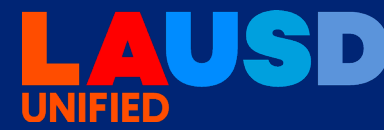
Current District Commitment to Community Based Safety: School Police

Los Angeles School Police currently:

- Continue to work in a community patrol model
- Provide short-term, on-campus support as needed
- Connect directly with other law enforcement entities on behalf of schools and the District
- Provide other critical services, including:
 - Mental Health Evaluation Team
 - Policy Academy Magnet Schools (PAMS)
 - Los Angeles School Anonymous Reporting (LASAR)
 - First Aid Training
 - Active Assailant Response
 - Safety Collaboratives
 - “Walking the Beat”
 - “Rocket Rules: Sense of Safety” Program
 - Anger Management Program for Students (A.M.P.S.)



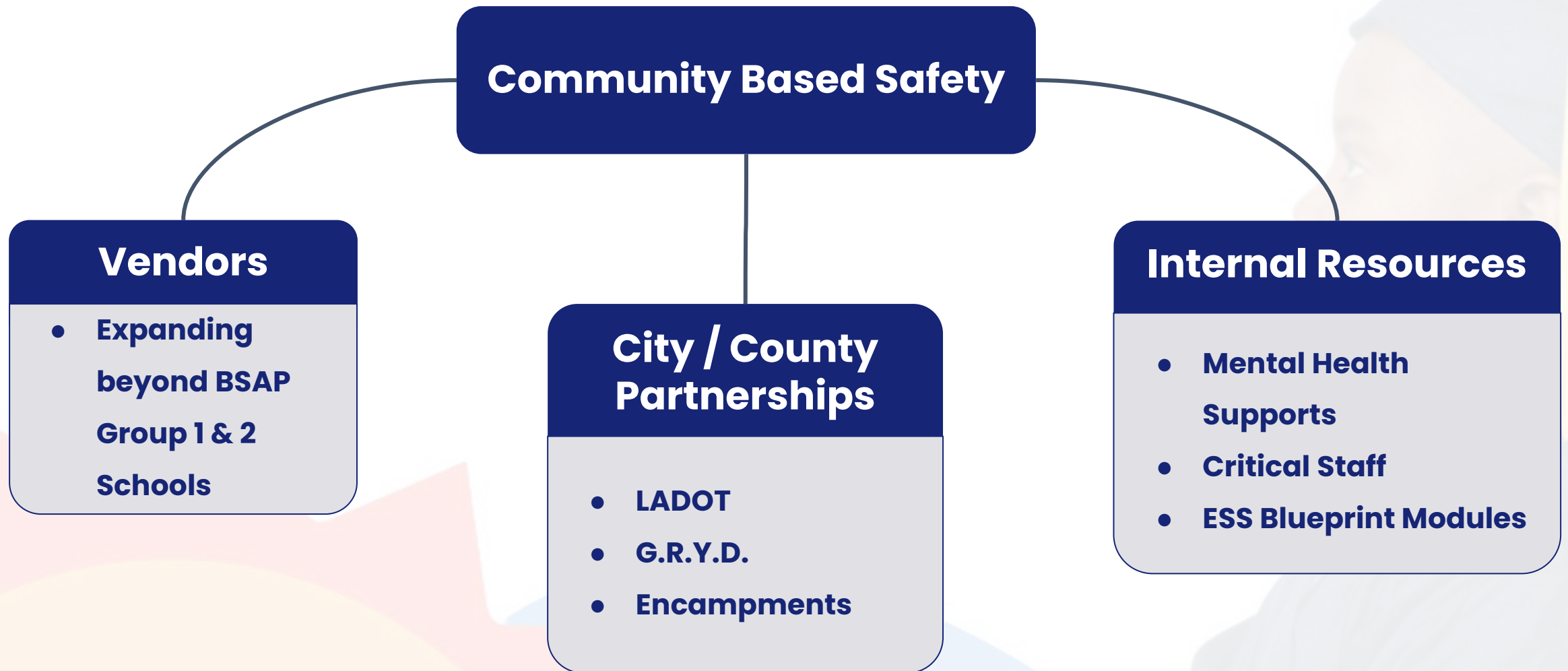
Current District Commitment to Community-Based Safety: Safety Collaboratives



A safety collaborative is a group comprised of local law enforcement, LASPD, school administrators and/or staff that work in collaboration to assist and develop strategies to support safety and operations inside and outside of the school.

<u>Region North</u>	<u>Region South</u>	<u>Region East</u>	<u>Region West</u>
West Valley	Carson	Bell High	LA Mid City /
Devonshire	Fremont	Boyle Heights/	Hollywood COS
Foothill	Gardena	City Terrace/	Northeast
Mission Division / SFPD	Harbor City / Lomita	Lincoln Heights/	Olympic
North Hollywood	HEET	El Sereno	Pacific
Northeast	Jordan/Locke/Dymally	East LA Sheriff's	Rampart
Rampart	Manual Arts	Huntington Park PD	Wilshire
San Fernando PD	Northeast	Newton	
Sunland / Tujunga	Rampart	Northeast	
Topanga	Rivera	Olympic	
Van Nuys	San Pedro	Rampart	
	Wilmington	South Gate High	

Community-Based Safety Expansion Strategies & Commitments



Community-Based Safety Expansion Strategies & Commitments

Based on the feedback received in our engagements, we will:

- Have at least 20 vendor-provided Community-Based Safety Pilot (CBSP) programs at Non-BSAP Group 1 / Group 2 schools by the end of the 24-25 School Year
- Establish & expand additional partnerships with City and County entities
- Have a representative from Community-Based Organizations at all Safety Collaboratives
- Continue regular engagement with all stakeholder groups around safety
- Using the *Every School Safe: Blueprint for Safety*, continue to educate employees, parents, and students on emergent safety-related concerns and resources impacting our school communities
- Continue to provide training to key District staff, such as School Climate Advocates and Campus Aides, around school-wide positive behavior and intervention support and social emotional learning
- Continue to ensure that our mental health resources meet the needs of our communities, and are easily accessible

Community-Based Safety Expansion

Anticipated Outcomes

Based on the proposed strategies and commitments, we anticipate **meeting or exceeding** the following Measures of Success as detailed in the District's Strategic Plan:

- Increase the percentage of students reporting on the School Experience Survey that they feel safe at school to **82%**
- Increase the number of students reporting on the SES that they feel safe in the neighborhood around their schools
 - ES- **78%**
 - MS- **75%**
 - HS- **68%**

Questions



Thank you

