



**LAUSD**  
UNIFIED

# Community-Based Safety Analysis & Expansion Resolution Update

---

January 2024

# Community-Based Safety Analysis & Expansion Resolution Update

---

Andrés E. Chait  
Chief of School Operations  
Division of School Operations

# Community-Based Safety Analysis & Expansion Resolution

Resolution was unanimously approved by LAUSD Board of Education on June 13, 2023. It affirms the Board's commitment to a holistic vision of school safety, creating safe, welcoming, culturally and racially-responsive school climates supported by community partnerships that respond to on-campus incidents in constructive, non-criminalizing ways.

## Resolution calls for:

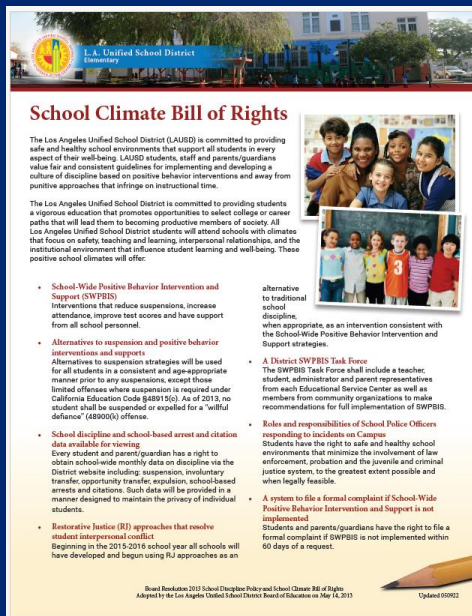
- Landscape analysis that identifies opportunities and challenges in further engaging community-based organizations in responding to the safety needs of our school communities
- Identifying and addressing internal barriers to expanding and implementing community-based safety partnerships
- A progress report by January 2024
- A final comprehensive report, in alignment with the District's Strategic plan, to be shared in May 2024



# School Climate Bill of Rights

The Los Angeles Unified School District (LAUSD) is committed to providing safe and healthy school environments that support all students in every aspect of their well-being. LAUSD students, staff and parents/guardians value fair and consistent guidelines for implementing and developing a culture of discipline based on positive behavior interventions and away from punitive approaches that infringe on instructional time.

## Elementary



**School Climate Bill of Rights**

The Los Angeles Unified School District (LAUSD) is committed to providing safe and healthy school environments that support all students in every aspect of their well-being. LAUSD students, staff and parents/guardians value fair and consistent guidelines for implementing and developing a culture of discipline based on positive behavior interventions and away from punitive approaches that infringe on instructional time.

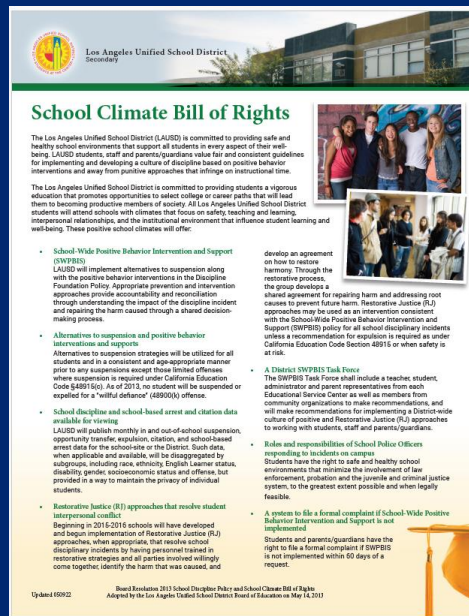
The Los Angeles Unified School District is committed to providing students a vigorous education that promotes opportunities to select college or career paths that will lead them to becoming productive members of society. All Los Angeles Unified School District students will attend schools with climates that focus on safety, teaching and learning, interpersonal relationships, and the institutional environment that influence student learning and well-being. These positive school climates will offer:

- **School-Wide Positive Behavior Intervention and Support (SWPBS)**  
Interventions that reduce suspensions, increase attendance, improve test scores and have support from all school personnel.
- **Alternatives to suspension and positive behavior interventions and supports**  
Alternatives to suspension strategies will be used for all students in a consistent and age-appropriate manner prior to any suspensions, except those limited offenses where suspension is required under California Education Code §48915(c). As of 2013, no student shall be suspended or expelled for a "willful defiance" (48900(k)) offense.
- **School discipline and school-based arrest and citation data available for viewing**  
Every student and parent/guardian has a right to obtain school-wide monthly data on discipline via the District website including: suspension, involuntary transfer, opportunity transfer, expulsion, school-based arrests and citations. Such data will be provided in a manner designed to maintain the privacy of individual students.
- **Restorative Justice (RJ) approaches that resolve student interpersonal conflict**  
Beginning in the 2015-2016 school year all schools will have developed and begun using RJ approaches as an alternative to traditional school discipline, when appropriate, as an intervention consistent with the School-Wide Positive Behavior Intervention and Support strategies.
- **A District SWPBS Task Force**  
The SWPBS Task Force shall include a teacher, student, administrator and parent representatives from each Educational Service Center as well as members from community organizations to make recommendations for full implementation of SWPBS.
- **Roles and responsibilities of School Police Officers responding to incidents on Campus**  
Students have the right to safe and healthy school environments that minimize the involvement of law enforcement, probation and the juvenile and criminal justice system, to the greatest extent possible and when legally feasible.
- **A system to file a formal complaint if School-Wide Positive Behavior Intervention and Support is not implemented**  
Students and parents/guardians have the right to file a formal complaint if SWPBS is not implemented within 60 days of a request.

Revised Resolution 2015 School Discipline Policy and School Climate Bill of Rights  
Approved by the Los Angeles Unified School District Board of Education on May 14, 2015

Updated 01/2022

## Secondary



**School Climate Bill of Rights**

The Los Angeles Unified School District (LAUSD) is committed to providing safe and healthy school environments that support all students in every aspect of their well-being. LAUSD students, staff and parents/guardians value fair and consistent guidelines for implementing and developing a culture of discipline based on positive behavior interventions and away from punitive approaches that infringe on instructional time.

The Los Angeles Unified School District is committed to providing students a vigorous education that promotes opportunities to select college or career paths that will lead them to becoming productive members of society. All Los Angeles Unified School District students will attend schools with climates that focus on safety, teaching and learning, interpersonal relationships, and the institutional environment that influence student learning and well-being. These positive school climates will offer:

- **School-Wide Positive Behavior Intervention and Support (SWPBS)**  
LAUSD will implement alternatives to suspension along with the positive behavior interventions in the Discipline Foundation Policy. Appropriate prevention and intervention approaches provide accountability and reconciliation through understanding the impact of the discipline incident and repairing the harm caused through a shared decision-making process.
- **Alternatives to suspension and positive behavior interventions and supports**  
Alternatives to suspension strategies will be utilized for all students and in a consistent and age-appropriate manner prior to any suspensions except those limited offenses where suspension is required under California Education Code §48915(c). As of 2013, no student will be suspended or expelled for a "willful defiance" (48900(k)) offense.
- **School discipline and school-based arrest and citation data available for viewing**  
LAUSD will publish monthly in and out-of-school suspension, opportunity transfer, expulsion, citation, and school-based arrest data for the school-site or the District. Such data, when applicable and available, will be disaggregated by subgroups, including race, ethnicity, English Learner status, disability, gender, socioeconomic status and others, but provided in a way to maintain the privacy of individual students.
- **Restorative Justice (RJ) approaches that resolve student interpersonal conflict**  
Beginning in 2015-2016 schools will have developed and begun implementation of Restorative Justice (RJ) approaches, when appropriate, that resolve school disciplinary incidents by having personnel trained in restorative strategies and all parties involved willingly come together, identify the harm that was caused, and develop an agreement on how to restore harmony. Through the restorative process, the group develops a shared agreement for repairing harm and addressing root causes to prevent future harm. Restorative Justice (RJ) approaches may be used as an intervention consistent with the School-Wide Positive Behavior Intervention and Support (SWPBS) policy for all school disciplinary incidents unless a recommendation for expulsion is required as under California Education Code Section 48915 or when safety is at risk.
- **A District SWPBS Task Force**  
The SWPBS Task Force shall include a teacher, student, administrator and parent representatives from each Educational Service Center as well as members from community organizations to make recommendations, and will make recommendations for implementing a District-wide culture of positive and Restorative Justice (RJ) approaches to working with students, staff and parents/guardians.
- **Roles and responsibilities of School Police Officers responding to incidents on campus**  
Students have the right to safe and healthy school environments that minimize the involvement of law enforcement, probation and the juvenile and criminal justice system, to the greatest extent possible and when legally feasible.
- **A system to file a formal complaint if School-Wide Positive Behavior Intervention and Support is not implemented**  
Students and parents/guardians have the right to file a formal complaint if SWPBS is not implemented within 60 days of a request.

Revised Resolution 2015 School Discipline Policy and School Climate Bill of Rights  
Approved by the Los Angeles Unified School District Board of Education on May 14, 2015

Updated 01/2022



# Every School Safe (ESS): A Blueprint for Safety



# School Climate Personnel Resources

Item	Position/Item	Position at school site or region/district	FTEs	Budgeted
1	CBSP Vendor-Provided Support	School Support Service	NA	\$14,161,600
2	School Climate Advocates	School Site Based	338	\$31,952,381
3	RJ Teacher Advisors	Region/District	2	\$312,712
4	System of Support Advisors (SOSA)	Region/District	51	\$8,748,515
5	Campus Aides/Supervision Aides	School Site Based	1,901	\$94,070,638
6	PSWs	School Site Based	751	\$120,352,057
7	School Police	Region/District	382	\$63,635,373
8	Operations Coordinators	Region/District	29	\$6,751,415
9	Mental Health Coordinators	Region/District	7	\$1,562,332
10	Organizational Facilitator	Region/District	30	\$5,412,525
11	Healthy Start Coordinator	School Site Based	16	\$1,924,608
12	RJ Teachers	School Site Based	120	\$16,397,297
Total			3,627	\$365,281,453

# Community-Based Safety and L.A. Unified: Mapping the Landscape

Analysis per Community Safety Resolution (Res-023-22/23)



Safety and School Climate Committee Meeting  
January 29, 2024

Independent Analysis Unit  
Governing Board of Education  
Los Angeles Unified School District

# Agenda

- I. Progress
- II. What the IAU has done
- III. Community-based safety and L.A. Unified
- IV. Understanding the landscape of community-based safety
- V. Next steps



# IAU Progress Report on Res-023-22/23



## Task

“conduct a landscape analysis that reviews which organizations are providing services, what they are providing, and data previously compiled regarding community-based safety approaches”



## Questions

What organizations provide community-based safety related services?

In what ways are District partnerships related to community-based safety successful?

What are some challenges to successful District partnerships?

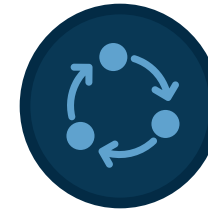


## Data collection

Convening (listening session)

Interviews

Compiling list of organizations

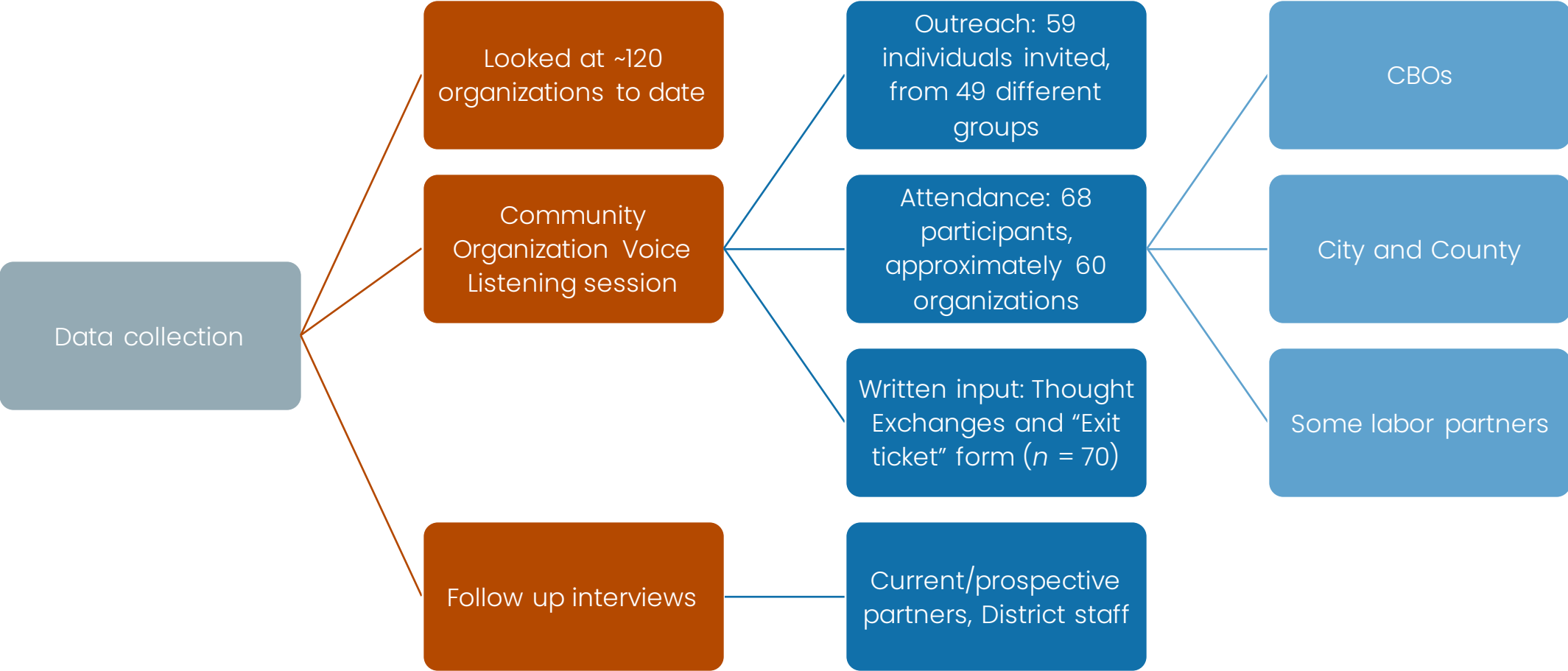


## Analysis and reporting

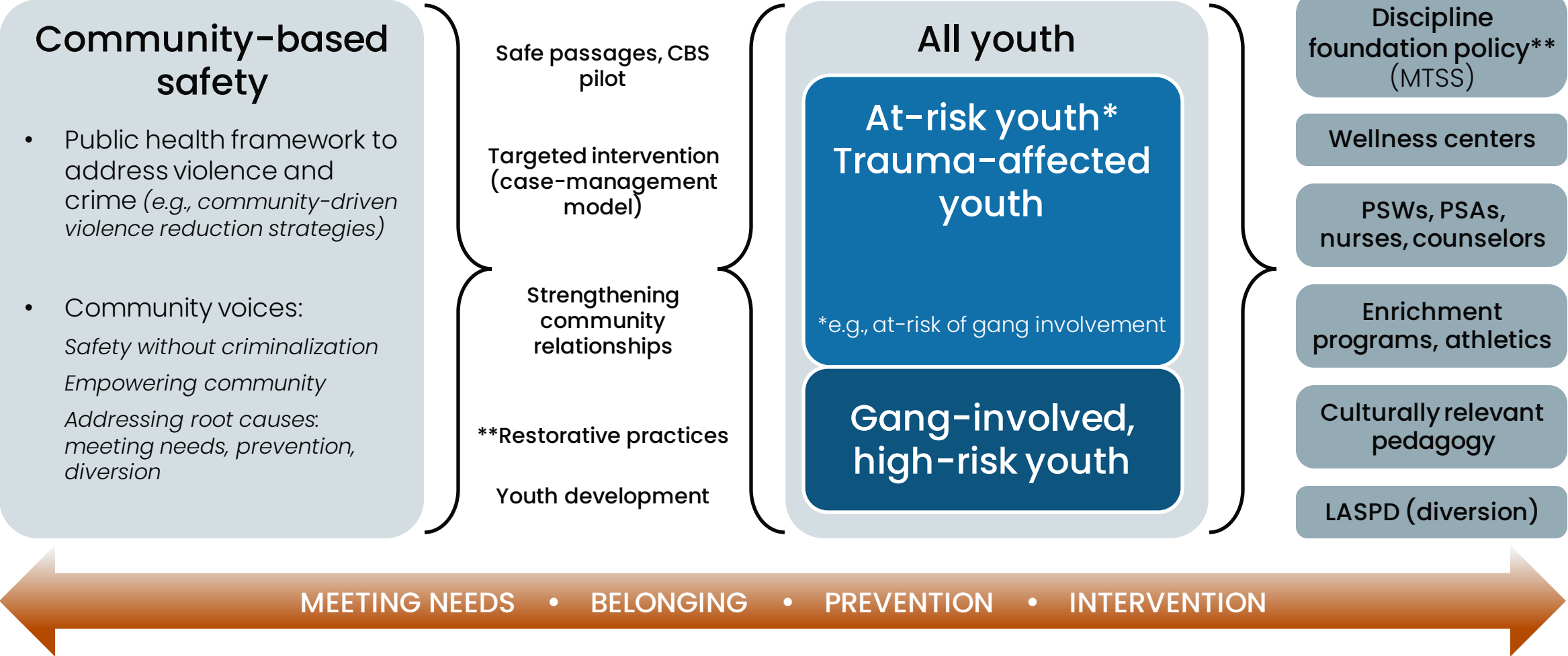
Understanding challenges and opportunities with current/past successful/failed partnerships

Complete final report

# To date, the IAU has engaged community members, organizations, district leaders, and government agencies

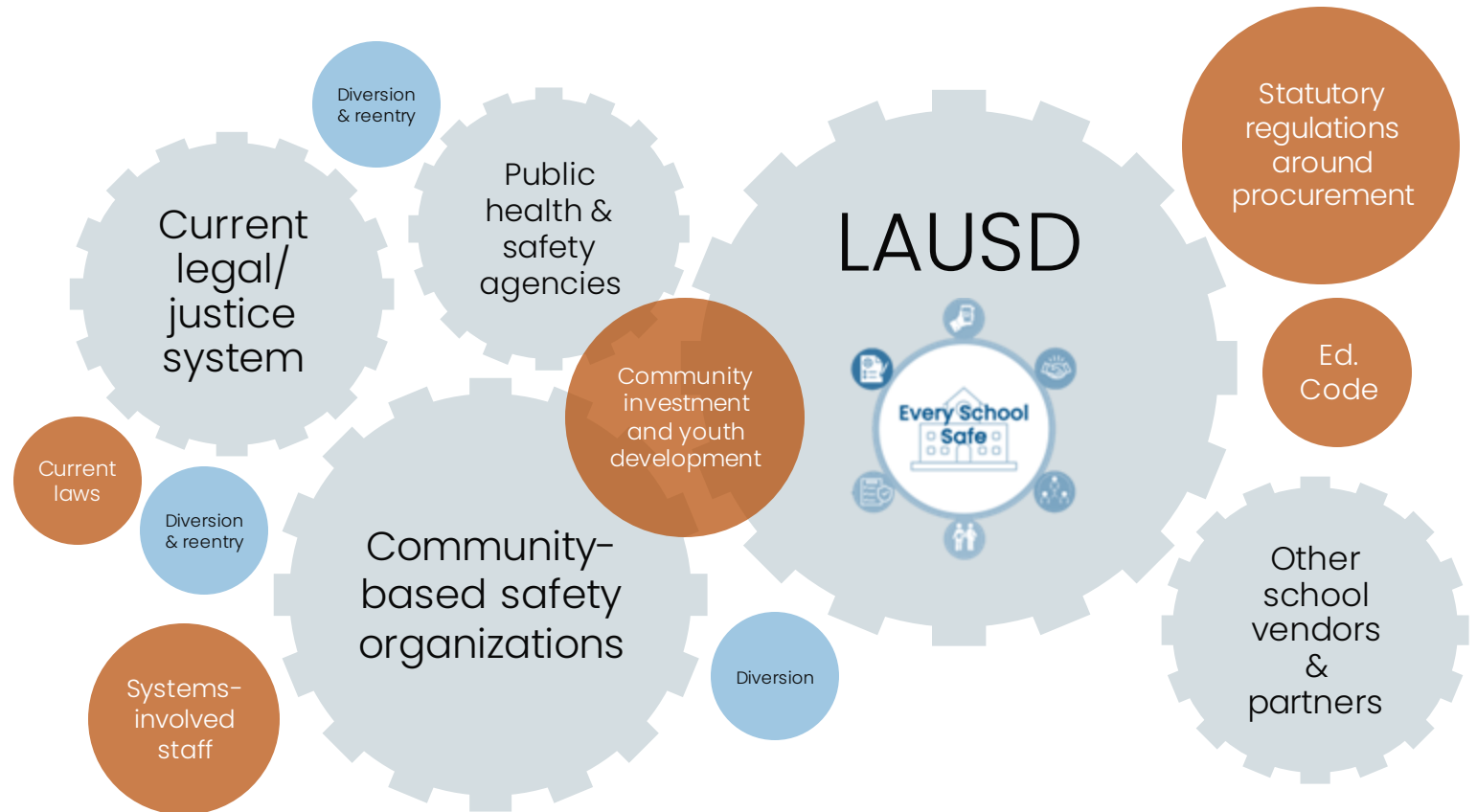


# How a community-based safety approach intersects with District policy and practice

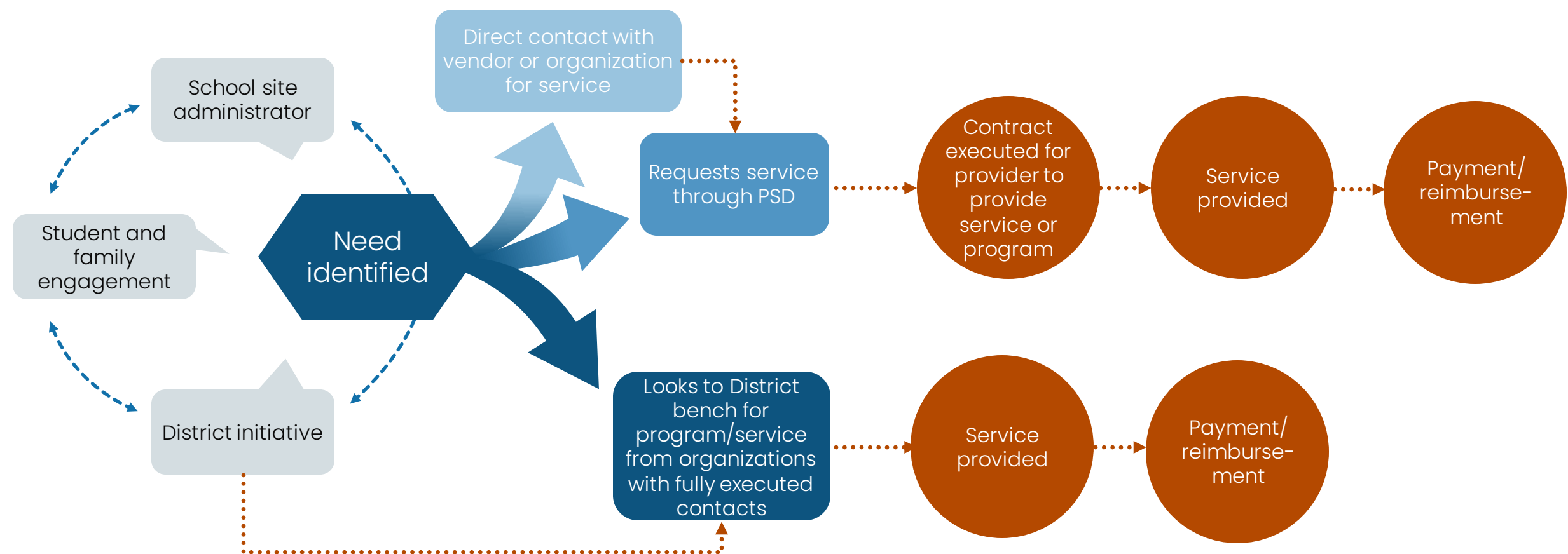


# Mapping the landscape: Community-based safety (CBS) and school safety ecosystems are complex

- 1 Achieving community-based safety entails coordination and investment from multiple public entities
- 2 Often, city and county youth development and diversion objectives overlap with L.A. Unified's community-based safety and academic enrichment objectives, but the means of achieving these objectives do not always overlap – potentially for practical reasons

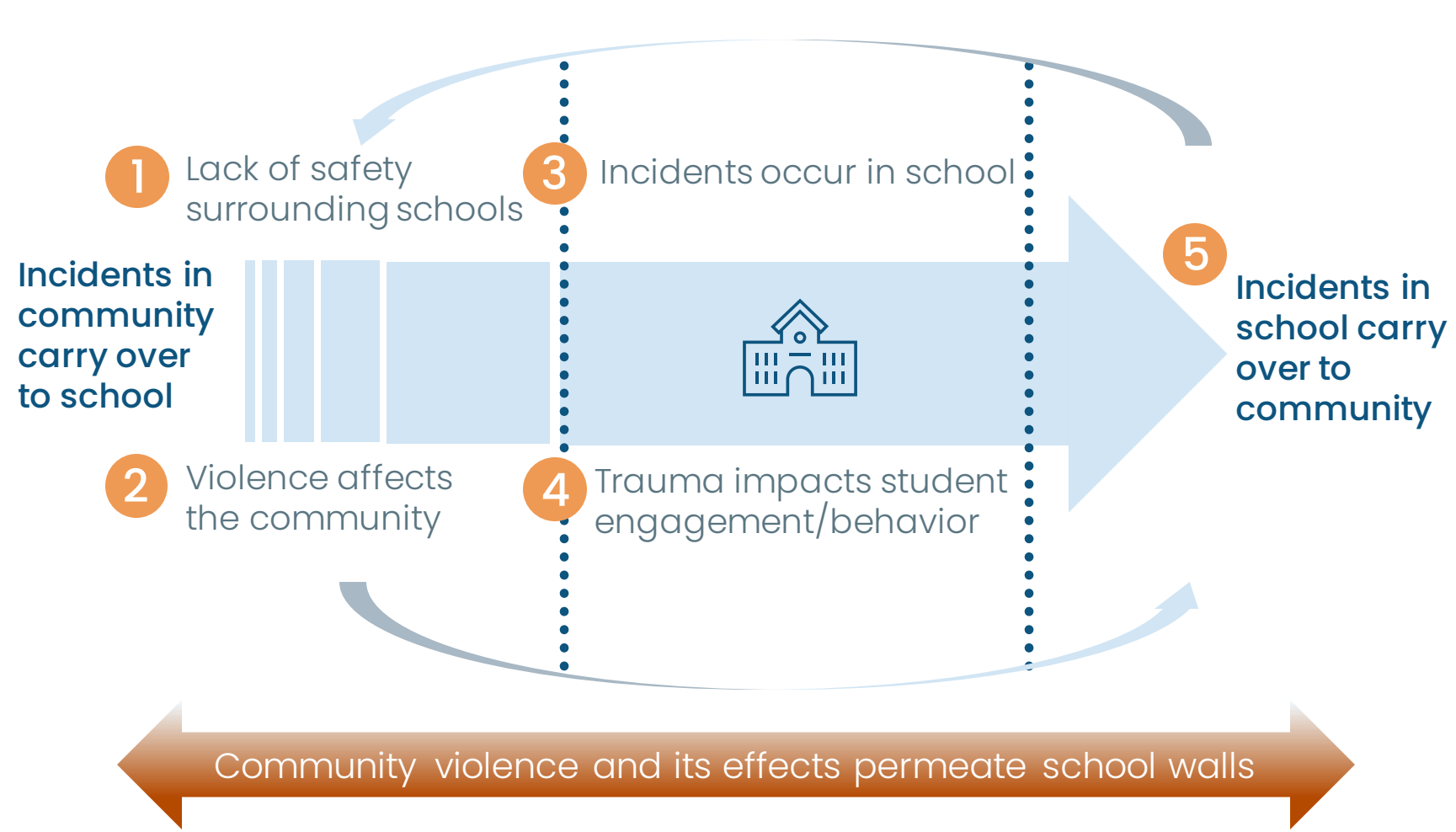


# Mapping the landscape: How organizations contract with schools is one aspect of CBS





# Mapping the landscape highlight: **community violence** prevention and intervention



- Some key programs/services and entities directly involved
- 1 Safe passages, safety collaboratives ● ▲ ◆ ■
  - 2 Youth development ▲ ◆
  - 3 Peace-building, diversion ● ▲
  - 4 Whole child services and programming ● ▲ ◆
  - 5 Community investment and diversion ▲ ◆ ■
- L.A. Unified  
▲ CBS Organization  
◆ City/County Youth or Public Health Agency  
■ Law Enforcement Agencies

# Understanding the landscape: Tensions and opportunities

## Opportunities

- The CBS pilot programs using safe passage staff for peace-building may be a model for retaining safe passage staff.
- Strengthening relationships (informal) between schools and organizations may help schools prevent retaliation or intervene when events happen in school or outside of school.
- Helping principals connect organizations with “school champions” or key staff like PSAs (when applicable) may help schools and organizations achieve better outcomes.
- Website and other communication improvements can make information more accessible for schools and organizations.
- Continued progress on clarifying processes (e.g., volunteering req. have been clarified, MOU clarification/simplification in progress).

## Tensions

- *Pool of organizations*: Questions around purpose and owners of database of community-based safety organizations.
- *Vendor’s employees*: Organizations that employ justice-involved individuals may be effective, but District must follow law.
- *Coordination problem*: Multiple entities/jurisdictions overlap in achieving community safety – coordination problem.
- *Payment & contracting challenges*: 501c3s cannot register as SBEs to receive prompt payments. This is particularly challenging for organizations with small operating budgets, common within the CBS framework.
- Improving communications only goes so far.

# Next steps

- More interviews to shed light on opportunities and tensions
- Complete qualitative analysis of list of organizations
- Share report with the Board and the District

**Questions?**

# Community Based Safety Pilot (CBSP) Update

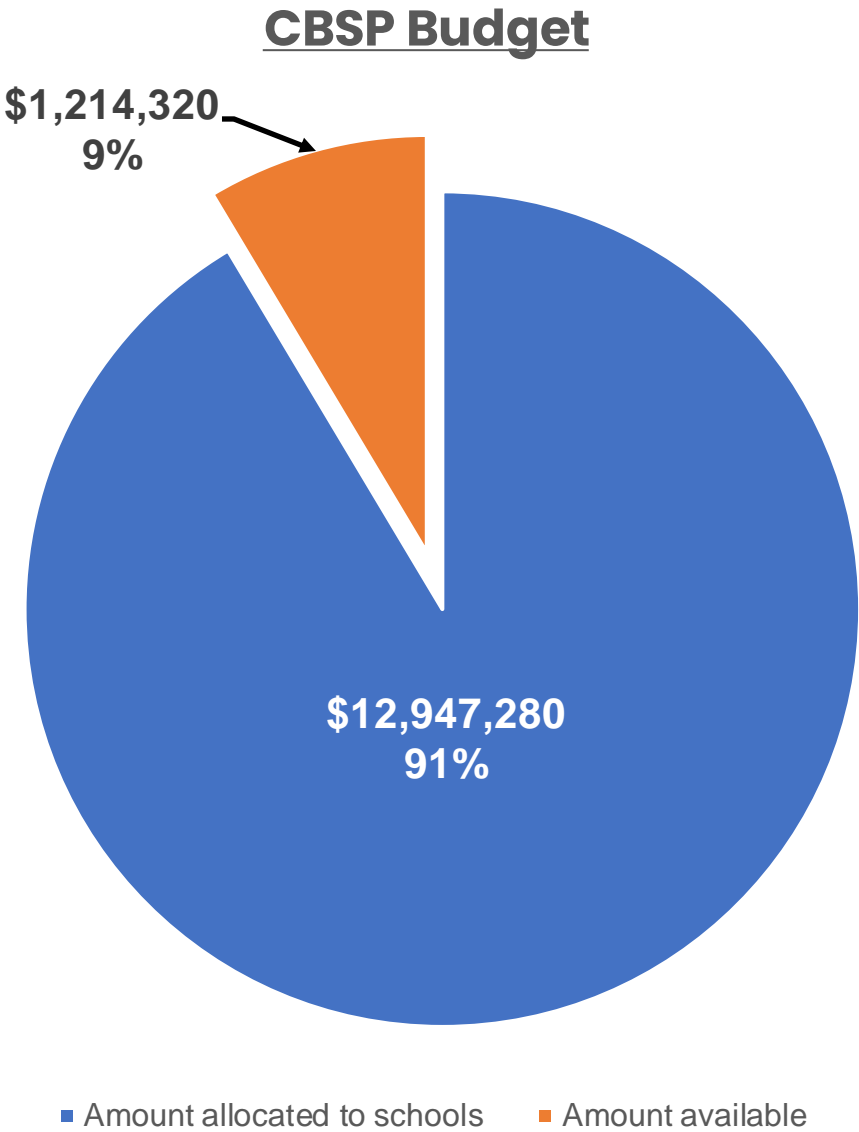
---



# Community Based Safety Pilot (CBSP)

CBSP Budget (Program 13363)	
Total Budget	\$14,161,600
Amount Allocated to schools	\$12,947,280
Amount Available	\$1,214,320

# of Schools with funding allocation	77
# of CBSP programs funded	150
# of Active CBSP Programs	77
# of Schools with Active Safe Passage Programs	31
# of Schools with Active Community Development/Peace Building Programs	46





# BSAP Bench Vendors

VENDOR	BSAP PROGRAM(S)
Social Justice Learning Institute	Community Partnerships
Dynasty' United Youth Association	Community Partnerships
New Hope Academy	Community Partnerships & Peace Building
reDiscover Center	Community Partnerships
Boys & Girls Club of Carson	Community Partnerships
Educate-California	Community Partnerships
A Yancy Life	Community Partnerships & Safe Passage
Youth Guidance	Community Partnerships
Study Smart Tutors	Community Partnerships
College Bound 4 Kids	Community Partnerships
Equation 2 Success	Community Partnerships
Achieve Initiative Foundation	Community Partnerships & Safe Passage
STEM to the Future	Community Partnerships
Inspiration 52	Community Partnerships
Sista Friends	Community Partnerships
Boys 2 Gentlemen	Community Partnerships & Safe Passage
Brothers Against Banging Youth (BABY)	Peace Building & Safe Passage
Community Base Public Safety Collective	Peace Building & Safe Passage
Community Build	Community Development & Safe Passage
LA Education Partnerships (LAEP)	Community Development
Educare Foundation	Peace Building

# Community Based Safety Pilot

## Safe Passage Objective

---

**Safe Passage** is a program that assists students and parents in safely commuting to and from school. Safe Passage is a holistic and proactive approach that aims to increase safety measures outside the school campuses by leveraging teams of individuals with strong community connections and trained in conflict resolution, violence intervention, and de-escalation. In addition, to meet students' needs, safe passage providers shall actively develop supportive relationships with students.



# Active Safe Passage Programs

Vendor Name	School Site
Strong Shoulders	Dorsey HS
Strong Shoulders	Foshay Learning Ctr Span
Strong Shoulders	42 <sup>nd</sup> St ES
Strong Shoulders	Jefferson HS
Strong Shoulders	Manual Arts HS
Strong Shoulders	Hawkins HS
Strong Shoulders	Figueroa ES
Strong Shoulders	Fairfax HS
Strong Shoulders	Purche ES
Chapter Two Inc	Fremont HS
Chapter Two Inc	Dymally HS
Chapter Two Inc	Maya Angelou HS
Boys 2 Gentleman	59th St ES
Boys 2 Gentleman	92nd St ES
Boys 2 Gentleman	South Park MS
Boys 2 Gentleman	Flournoy ES
Boys 2 Gentleman	LA Academy MS

Vendor Name	School Site
Boys 2 Gentleman	95 <sup>th</sup> St. ES
Boys 2 Gentleman	Venice HS
We Care Outreach Ministries	Markham MS
We Care Outreach Ministries	Griffith-Joyner ES
We Care Outreach Ministries	Jordan HS
Preparing An Educational Atmosphere That Cultivates Excellence (PEACE)	Barrett ES
Preparing An Educational Atmosphere That Cultivates Excellence (PEACE)	Bethune MS
Preparing An Educational Atmosphere That Cultivates Excellence (PEACE)	Knox ES
The City Lights Gateway Foundation	Narbonne HS
The City Lights Gateway Foundation	Manual Arts HS
I Am Breaking The Chains (IABTC)	Dana MS
I Am Breaking The Chains (IABTC)	Carson HS
Brothers Against Banging Youth (B.A.B.Y.)	Cochran MS
Brothers Against Banging Youth (B.A.B.Y.)	Hamilton HS

The **Community Development** program promotes community engagement, parent, and student leadership opportunities with local partners in service of creating safer campus communities. The program Includes promoting parent community participation, students job skills, and building relations with powerful community leaders and organizations working on community-based safety, youth justice and alternatives to incarceration.





# Community Based Safety Pilot Peace Building Objective

---

The **Peace Building** program promotes students' knowledge and understanding of conflict and affirms preferred methods of self-control and conflict resolution skills; the program also helps students develop core life skills to successfully manage safety issues and conflicts that may arise in school, work, extra-curricular activities, and social relationships.





# Active Community Development/Peace Building Programs

Vendor Name	School Site
5M Legacy	42Nd St ES
Achievement Initiative Foundation	Drew MS
Allison Enterprise, Llc	West Athens ES
Boys & Girls Club Of Carson	Purche ES
Bridge Builders Foundation	Bradley Gbl Awr Mag
Bridge Builders Foundation	Foshay LC
Cf Fitness Inc.	Cimarron ES
Cf Fitness Inc.	Cowan ES
Cf Fitness Inc.	59Th St ES
Cf Fitness Inc.	Raymond Ave ES
Cf Fitness Inc.	74Th St ES
Convenient Fun Fitness	Crescent Hts L/A/S/J
Convenient Fun Fitness	Yes Academy
Convenient Fun Fitness	Manchester ES
Convenient Fun Fitness	Open Charter
Convenient Fun Fitness	South Park ES
Convenient Fun Fitness	West Athens ES
Damen Fletcher DbA	Crescent Hts L/A/S/J
Damen Fletcher DbA	59Th St ES
Damen Fletcher DbA	95Th St ES
True Health 4Ever Llc	Foshay LC
True Health 4Ever Llc	Madison MS
True Health 4Ever Llc	Dorsey HS

Vendor Name	School Site
Damen Fletcher DbA	Knox ES
Damen Fletcher DbA	Bradley Gbl Awr Mag
Damen Fletcher DbA	Bethune MS
Damen Fletcher DbA	Los Angeles Acad MS
Damen Fletcher DbA	King Film/Media Mag
Damen Fletcher DbA	Venice HS
Do Good Daniels	Dana MS
Do Good Daniels	Carson HS
Enrichla	Purche ES
Imagine Etiquette, Inc.	Raymond Ave ES
Keith Allen Business Enterprise Llc	Audubon MS
Kids 4 College	42Nd St ES
Nia Knowledge Network	West Athens ES
Playworks Education Energized	Manhattan Place ES
Playworks Education Energized	95Th St ES
Playworks Education Energized	Griffith Joyner ES
Playworks Education Energized	Mc Kinley ES
Project Lead The Way, Inc.	Muir MS
Stepping In The Right Direction	Narbonne HS
The Love We Dont See	Annalee ES
True Health 4Ever Llc	59Th St ES
True Health 4Ever Llc	Knox ES
True Health 4Ever Llc	Dymally HS

# Continuing Outreach to Community-Based Prospective Vendors

---

- BSAP Bench "Refresh"/Expansion
- Informational Sessions held on January 16 and January 25
- 76 participants in attendance at 1/16 session
- Over 120 participants in attendance at 1/25 session
- Submittals due February 5

# Next Steps

- Student engagement via dialogue with MS & HS students
- Continued outreach to both current and prospective community-based vendors
- Continued engagement with city and county agencies to fortify and refine existing relationships
- Review and analysis of School Experience Survey (SES) data to inform next steps
- Next Report in May 2024



**THANK YOU!**